

Providence College

DigitalCommons@Providence

Playbill and Promotions

Cast(e) (2020)

11-12-2020

Cast(e) Playbill

Providence College

Providence College

Follow this and additional works at: https://digitalcommons.providence.edu/caste_pubs



Part of the [Acting Commons](#)

Recommended Citation

College, Providence, "Cast(e) Playbill" (2020). *Playbill and Promotions*. 1.

https://digitalcommons.providence.edu/caste_pubs/1

This Book is brought to you for free and open access by the Cast(e) (2020) at DigitalCommons@Providence. It has been accepted for inclusion in Playbill and Promotions by an authorized administrator of DigitalCommons@Providence. For more information, please contact dps@providence.edu.



PROVIDENCE COLLEGE
DEPARTMENT OF THEATRE, DANCE & FILM

CAST(E)

A devised performance piece inspired by Black voices and responding to racial injustice



Directed by Erin Joy Schmidt
A Virtual Event
Premiering November 12 at 7:30pm EST
Please visit the link below for more information
theatre.providence.edu/current-season

Photos courtesy of The Providence College Archives and Special Collections



CREATIVE & PRODUCTION

Erin Joy Schmidt.....Director
Kelly Slader.....Stage Manager
David Costa-Cabral.....Costume Designer
Jimmy Calitri.....Managing Director of Theatre
Megan Chang.....Vocal Coach
Matt Corey.....Producer/Musician
Trevor Elliott.....Technical Director, Visual Editor
Gabe Luxton.....Asst. Technical Director, Sound Editor
Talia Triangolo.....Production Office Coordinator

ENSEMBLE

Sydney Cahill
Santiago Najarro Cano
Starling (Estarlyn Hiraldo)
Abbie Joy
Halle Pratt
Kari Elisa Robles
Lucille Vasquez
Nana Akua Asante*
Acklynn Byamugisha*
Thalea Gauthier*
Marvin Tavares*

*PC Alumni

2020-2021 TDF PRODUCTION SEASON ACTION STATEMENT

The directors of theatre productions that will be presented this year by the Department of Theatre, Dance & Film at Providence College have committed to opening up space in the theatre season to tell Black centered stories and highlight Black voices in order to diversify our exploration of the human condition. We believe that the arts, and theatre in particular, should reflect and respond to the current activism and racial reckoning in our country. As we move forward artistically and pedagogically, we are conscious of our responsibility to ensure that there will be a place for artists of color to be seen and heard in the theatre created at Providence College.

SPECIAL THANKS

For this project, we owe a tremendous debt of gratitude to the entire IDEI office at Providence College including Jackie Peterson, Quincy Bevely, Sokeo Ros and most especially Professor Theresa Moore, who gave of her time generously and thoughtfully to this project. To the creators of the BlackatPC Instagram page, thank you for creating a space for open dialogue, and to the members of the community who contributed your story to the page, thank you.

Your words inspired ours.

CREATIVE AND GUEST ARTIST BIOS

Erin Joy Schmidt (Director) is an Assistant Professor of Theatre at Providence College and a proud alumna. Last season she directed TDF's production of Jean Genet's *The Maids*. Prior to returning to TDF, Erin was a Visiting Assistant Professor of Theatre and Director of Performance Studies at Avila University in Kansas City. She holds an M.F.A. in Acting from The Actors Studio Drama School at New School University, where she was awarded the prestigious Shubert Scholarship for Excellence by her peers and professors. As a professional actor, Erin has performed regionally in over forty productions, including several world premieres. She has worked at the Williamstown Theatre Festival, Mirror Rep, City Theatre, Gablestage and Palm Beach Dramaworks, among others. Erin has directed many times, including productions of *Little Shop of Horrors*, *The Grapes of Wrath*, *Pippin*, *Uncommon Women and Others*, and *Into the Woods*. She is a very proud member of the Actors Equity Association.

Matt Corey (Producer/Musician) earned both his Bachelor's and Master's degree in bassoon performance at the University of Miami and is currently a member of The Symphonia of Boca Raton. By day, Matt is the President and CEO of Insight for the Blind in Fort Lauderdale, a 45-year-old charity devoted to recording books, magazines, and other accessible media for the blind and print disabled.

David Costa-Cabral (Costume Designer) received his BA in Theatre from Rhode Island College, and his MFA in Theatrical Design from Southern Methodist University in Dallas, Texas. He joined Providence College in the fall of 1984 and is currently a Tenured, Full Professor. In recent seasons at Providence College he has been responsible for Costume Designs for *The Moors*, *Into the Woods*, *The Laramie Project*, *The Addams Family*, *A Midsummer Night's Dream*, *The Imaginary Invalid*, *Funny Girl*, *Little Women*, *Amadeus*, *The Importance of Being Earnest*, *Charley's Aunt*, *A Flea in Her Ear* and *Macbeth*. Last season at Salve Regina University he designed *Brighton Beach Memoirs*, *Peter and the Starcatcher* and *Gypsy*. David continues to work professionally at such venues as Theatre By The Sea in Matunuck, RI (*Joseph and The Amazing Technicolor Dreamcoat*, *Annie*, *The Sound of Music*, *West Side Story*, *The Buddy Holly Story*, *How to Succeed in Business...*), Ocean State Theatre Company, formerly in Warwick, RI (*The King and I*), North Shore Music Theatre in Beverly, Massachusetts (*Grease* and *West Side Story*), The Lyrics Stage of Boston (*Noises Off*, *A Little Night Music*, *Souvenir*, *Adrift in Macao*). Quite regularly he is the costume designer at The Boston Conservatory @ Berklee, in Boston Mass. Among his recent Boco/Berklee Shows are: *Dirty Rotten Scoundrels*, *Carousel*, *Side Show* (twice), *Red Noses*, *Catch Me If You Can*, *Thoroughly Modern Millie*, *Oklahoma*, *The Way of the World*, *Follies* (twice), *Kismet*, *The Three Sisters*, *Showboat*, *The Reimers of Eldritch*, *Curtains*, *42nd Street*, *The Three Penny Opera* and *Spring Awakening*.

Megan Chang (Vocal Coach) is Assistant Professor of Voice & Speech at Providence College and the Core Curriculum Faculty Fellow for Oral Communication. Previously, she served as vocal coach for *Something Rotten!* (Regional Premiere), *Moon Over Buffalo*, *Lord of the Flies*, *Hamlet*, *The Laramie Project*, *A Midsummer Night's Dream*, *Playhouse Creatures*, and *The Addams Family* at Providence College. Megan also serves as the communication coach for Providence College's Big East Start Up Challenge team. She also teaches a variety of workshops on campus and with local professionals, most recently working as a Communications Consultant for Brown University's EMSTL program. She also teaches workshops in conjunction with Breakthrough Providence and PC's Friar Foundation. She received her MFA in Vocal Pedagogy from Virginia Commonwealth University. Previous coaching credits include: *Awake and Sing* (Rhode Island College); *The 39 Steps*, *A Christmas Carol*, *Dial M for Murder* (Triad Stage, North Carolina); *The Winter's Tale*, *Serjeant Musgrave's Dance*, *Deadly Sins: A Sword Play*, *Hoodoo Love*, *The Blood Knot*, *Rodgers & Hammerstein's Oklahoma!* (University of North Carolina School of the Arts); *Cabaret*, *Dracula*, *Psycho Beach Party* (Virginia Commonwealth University).

Trevor Elliott (Technical Director, Visual Editor) joined the production staff of PC in the spring of 2017. Before that, he was a freelance set designer/builder for local theaters including 2nd Story Theatre in Warren and New Bedford Festival Theatre at the Zeiterion. Trevor was the technical director at Roger Williams University from 2004 to 2011. Trevor is a graduate from Rhode Island School of Design with a degree in illustration. Previous designs at PC include *Bat Boy*, *Hamlet*, *Into the Woods*, *Playhouse Creatures*, and *The Addams Family*.

Gabriel Luxton (Asst. Technical Director, Sound Editor) joined the production team at the ABT in the fall of 2019. Before coming onboard officially he served as Sound Designer for several of PC's recent musicals including *Something Rotten*, *Bat Boy* and *Spelling Bee*. He has worked locally at ATR Treehouse and Trinity Repertory Company as a production and audio technician, in addition to freelance sound design work at various regional theaters. Gabe is a graduate of Eastern Connecticut State University with a degree in Theatre and History.

ENSEMBLE



Sydney Cahill



Santiago Najarro Cano



Starling
(Estarlyn Hiraldo)



Abbie Joy



Halle Pratt



Kari Elisa Robles



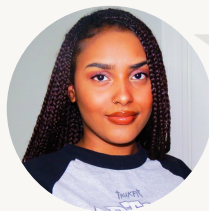
Lucille Vasquez



Nana Akua Asante*



Acklynn Byamugisha*



Thalea Gauthier*



Marvin Tavares*



Erin Joy Schmidt
Director



Kelly Slader
Stage Manager

FACULTY AND STAFF

Full-Time Faculty

Wendy Oliver, Ed. D., Professor of Dance
Dept. Chair of Theatre, Dance & Film

David Costa-Cabral, MFA, Professor
Theatre

Jimmy Calitri, MFA, Assoc. Professor
Managing Director of Theatre

Megan Chang, MFA, Assist. Professor
Voice and Speech

Mary Farrell, MFA, Professor Emerita
Theatre

John Garrity, MFA, Assoc. Professor
Theatre

Rev. Kenneth Gumbert, O.P., MFA, Professor
Film

Erin Joy Schmidt, MFA, Assist. Professor
Theatre

Adjunct Faculty

Alan Hawkrige, Graduate of LAMDA
Theatre

Pat Hawkrige, M.F.A.
Theatre

Robin James, MA
Oral Communication

Kate Lohman, MFA
Oral Communication

Jennifer Madden, Ph. D.
Theatre

Kathleen Nasti, MBA & MFA
Dance

Kevin Olson, MFA
Public Speaking

Patrick Mark Saunders, MFA
Theatre

Linda Sutherland, MA
Theatre

Ben Sweeney, MFA
Film

Staff

Ali Boyd, Academic Administrative Coordinator

Trevor Elliott, Technical Director

Gabe Luxton, Asst. Technical Director

Talia Triangolo, Production Administrative Coordinator

Maxine Wheelock, Costume Shop Supervisor