

Providence College

DigitalCommons@Providence

---

Development of Western Civilization Student  
Scholarship

Development of Western Civilization

---

Spring 2024

## Unraveling Paradise

Olivia Arslanian  
*Providence College*

Sydney King  
*Providence College*

Augustine Muller  
*Providence College*

Camryn Burns  
*Providence College*

Giana Napolitano  
*Providence College*

Follow this and additional works at: [https://digitalcommons.providence.edu/dwc\\_students](https://digitalcommons.providence.edu/dwc_students)



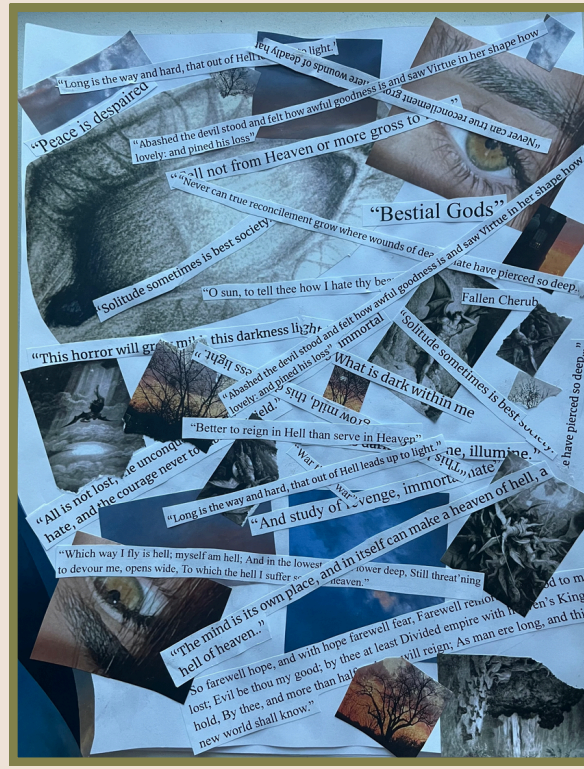
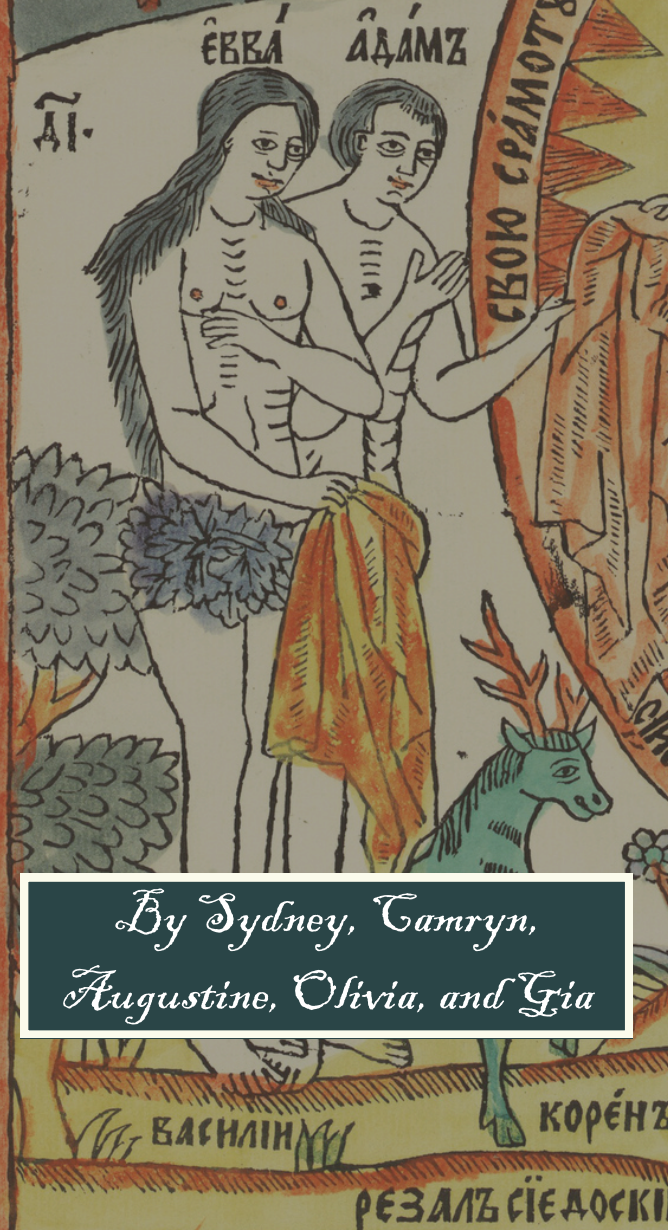
Part of the [Art and Design Commons](#)

---

Arslanian, Olivia; King, Sydney; Muller, Augustine; Burns, Camryn; and Napolitano, Giana, "Unraveling Paradise" (2024). *Development of Western Civilization Student Scholarship*. 4.  
[https://digitalcommons.providence.edu/dwc\\_students/4](https://digitalcommons.providence.edu/dwc_students/4)

This Project is brought to you for free and open access by the Development of Western Civilization at DigitalCommons@Providence. It has been accepted for inclusion in Development of Western Civilization Student Scholarship by an authorized administrator of DigitalCommons@Providence. For more information, please contact [dps@providence.edu](mailto:dps@providence.edu).

# Unraveling Paradise



I added multiple quotes from Satan throughout paradise loss that represent what and how evil takes over the mind and causes blindness. This connects with the theme of blindness, which Milton was when he wrote Paradise lost. This collage is supposed to represent how thoughts consume a person, especially when they are evil thoughts And how does self deceit allows these thoughts to prevail?



This 3x4 clay sculpture depicts a snake representing Satan deceiving Eve and convincing her to eat the fruit. The snake shows, what many believe, to be Satan's most true form therefore portraying this theme of beauty versus evil. Satan is "evil" and therefore perhaps cannot be beautiful. It also represents the idea that Eve, someone beautiful, could end up causing the evil that Satan portrays because of his inability to be with her.



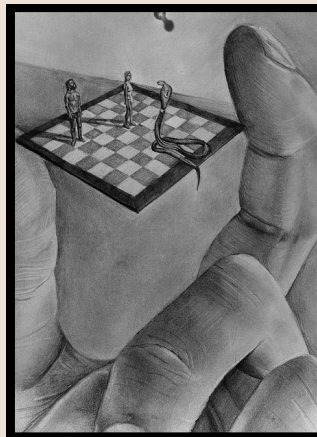
By Sydney, Tamryn, Augustine, Olivia, and Gia





### "Wild Symphony: Nature's Choreography"

In this captivating 10 x 13 oil painting, Eve's outstretched hand toward Adam signifies her resolute intent to draw him into the embrace of sin. As they ascend the Tree of Knowledge, their intertwined figures symbolize their primal, animalistic nature and their shared longing to defy divine command and grasp forbidden wisdom. While Eve succumbs to temptation driven by innocence, Adam follows her lead, consumed by a love so profound.



### "What's His next move?"

This 9 x 12 graphite drawing embodies the enigmatic concept of the "calm before the storm."

Within its surreal depths, Adam and Eve find themselves positioned on a chessboard, facing the cunning serpent.

Through symbolism, it delves into inquiries regarding divine permissiveness. The shadows cast by the figures reflect their earthly existence, tethered to human frailty, while the absence of shadow beneath the serpent alludes to the ethereal embodiment of Satan's spirit in physical form.

## Exhibit Summary

Our exhibit focuses on Paradise Lost by John Milton. We created five separate pieces to hopefully bring out the deeper, psychological, meaning of the book. We wanted to create art that depicted the themes we have been focusing on in class and the themes of the book such as beauty versus evil, deception, knowledge, and blindness.

A major theme from Paradise Lost was beauty versus evil. Eve was supposed to represent some ultimate beauty while Satan was the opposite. We see in the story that right before Satan deceives Eve he has a moment where he almost does not want to, he forgets how evil he is because of her beauty. However, this turns to anger because he knows he cannot have her. We wanted to represent what beauty can do to a person: turn them evil.

The next theme we wanted to focus on was the desire for knowledge. Adam and Eve are almost animalistic in their want for something more and their lack of this knowledge before eating the fruit. They crave knowledge that they are not supposed to have, according to God. However, just like any other human, they try to attain it.

Paradise Lost was written from the point of view of Satan himself, and through his lens, God was the one at fault for the things that happened to him and what caused Satan to tempt Eve. This represents the theme of deceit that we see throughout the book, God deceiving Adam and Eve as well as Satan.

An important theme we wanted to depict in our exhibit was the humanization of Satan. because his feelings throughout Paradise Lost were honestly relatable. We thought an important part of this book was the character of Satan, and how he was more human-like than in any other readings and wanted to show this through a modern painting.

Our final theme to focus on was blindness since our author, John Milton, was blind himself. This connects to our theme of beauty versus evil, because what happens when you take away the ability to see beauty: you take away its power. This is similar to Satan trying to dismantle God's power by corrupting His children, Adam and Eve.

An 8 x 10 portrait of Satan in the stereotypical fashion. This piece is a stylistic combination of Roy Lichtenstein and Alexandre Cabanel. The pop-art style reflects the modernity of the story that is Paradise Lost. The inspiration of Cabanel's "Fallen Angel" was to draw parallels between the painted depiction of Satan crying and the humanity that he has in Paradise Lost. The portrayal of Satan in Paradise Lost is that of a moral being with real emotions and desires.

How does Milton's portrayal of Satan challenge stereotypical notions?