

Providence College

DigitalCommons@Providence

---

Playbill and Promotion

A Man for All Seasons (2001)

---

Spring 2-22-2001

## A Man For All Seasons Playbill

Providence College

Follow this and additional works at: [https://digitalcommons.providence.edu/allseasons\\_2001\\_pubs](https://digitalcommons.providence.edu/allseasons_2001_pubs)



Part of the [Acting Commons](#)

---

**A MAN  
FOR  
ALL SEASONS**

**BY ROBERT BOLT**

**BLACKFRIARS THEATRE**  
**PROVIDENCE COLLEGE**



*Providence College  
Theatre Department Presents*

# A MAN FOR ALL SEASONS

*The Historical Drama By  
Robert Bolt*

**DIRECTED BY**  
*John Garrity*

**SCENIC DESIGN BY**  
*David Costa-Cabral  
and  
John Garrity*

**COSTUME DESIGN BY**  
*David Costa-Cabral*

**LIGHTING DESIGN BY**  
*Jamie Brink Grant*

**SOUND DESIGN BY**  
*Chuck Ladouceur*

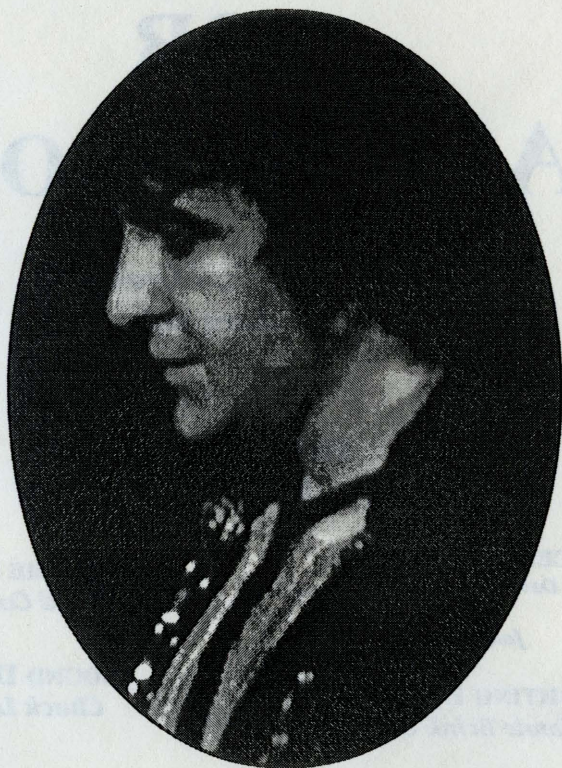
*Produced by special arrangement with  
Samuel French, Inc.*

**BLACKFRIARS THEATRE**  
**FEBRUARY 22-25, 2001**



**THIS PRODUCTION IS DEDICATED TO THE  
MEMORY OF**

**JAMES E. "LUKE" PREST  
(1941-2000)**



Teacher and friend to many Providence College theatre students, and an actor in the role of Cromwell in the 1973 PC Theatre Program Production of "A Man for all Seasons."

# THE CAST

<i>The Common Man.....</i>	<i>Joe Kilner</i>
<i>Sir Thomas More.....</i>	<i>Andrew Royals</i>
<i>Master Richard Rich.....</i>	<i>Daniel Janeiro</i>
<i>The Duke of Norfolk, Earl Marshall of England.....</i>	<i>James E. Kalagher</i>
<i>Lady Alice More, Sir Thomas's wife.....</i>	<i>Patricia Hughes</i>
<i>Margaret More, Sir Thomas's daughter.....</i>	<i>Therese Plachn</i>
<i>Cardinal Wolsey.....</i>	<i>Steven Rennau</i>
<i>Thomas Cromwell.....</i>	<i>Fernando Gutierrez</i>
<i>Signor Chapuys, the Spanish Ambassador.....</i>	<i>Chris Deely</i>
<i>Chapuys's Attendent.....</i>	<i>David Quinn</i>
<i>William Roper.....</i>	<i>Peter Brodbeck</i>
<i>King Henry the Eighth.....</i>	<i>Patrick Degnan</i>
<i>A Woman.....</i>	<i>Katie McBrine</i>
<i>Thomas Cranmer, Archbishop of Canterbury.....</i>	<i>Stephen Pollak</i>





## TIME: THE SIXTEENTH CENTURY

<b>ACT ONE</b>	Scene 1:	Sir Thomas More's house at Chelsea
	Scene 2:	Wolsey's apartment at Richmond
	Scene 3:	The riverside at Richmond
	Scene 4:	Sir Thomas More's house
	Scene 5:	Hampton Court Palace
	Scene 6:	The garden of Sir Thomas More's house
	Scene 7:	An Inn

<b>ACT TWO</b>	Scene 1:	Sir Thomas More's house
	Scene 2:	Cromwell's apartment at Hampton Court
	Scene 3:	Sir Thomas More's house
	Scene 4:	Cromwell's apartment at Hampton Court
	Scene 5:	The riverside at Hampton Court
	Scene 6:	The Tower of London
	Scene 7:	The same
	Scene 8:	The Hall of Westminster
	Scene 9:	Tower Hill

*There will be one ten-minute intermission.*

"Never trouble thy mind for anything that shall happen to thee in this world.  
Nothing can come but what God wills."

---Thomas More

"More is a man of an angel's wit and singular learning; I know not his fellow. For where is the man of gentleness, lowliness and affability? And as time requireth a man of marvellous mirth and pastimes; and sometimes of as sad gravity: a man for all seasons."

---Robert Whittinton

# THE CREW

<i>Stage Manager.....</i>	<i>Erin Keller</i>
<i>Assistant Stage Manager.....</i>	<i>Ellen Royals</i>
<i>Assistant Director.....</i>	<i>Ryan Brown</i>
<i>Properties.....</i>	<i>Stephen Pollak, Marissa McGrody</i>
<i>Light Board Operator.....</i>	<i>Sarah Orr</i>
<i>Sound Operator.....</i>	<i>Courtney Cullinan</i>
<i>Scene Shop Crew.....</i>	<i>Nicole Bisanti, Spencer Crockett, Patrick Degnan, Cristin Keegan, Paul LaRochelle, Leanne Martin, Crystal Paul, Joseph Pollaci, Craig Prentiss, Ashleigh Sanborn, Pamela Sewill, Rebecca Shaw, Jess Tabak, Colleen Thorp, Adam Ziemba, Jason Zybert</i>
<i>Costume Crew.....</i>	<i>Katie Cheely, Lauren Keyes, Jane Lewis, Jessica Pagano-Therrien, Stephanie Wodowski</i>
<i>Wardrobe.....</i>	<i>Lauren Brown, Katie Cheely</i>
<i>Properties Running Crew.....</i>	<i>Joe Bonfiglio, Spencer Crockett, Jessica Tabak</i>
<i>Box Office Manager.....</i>	<i>Elizabeth Delmage</i>
<i>Box Office &amp; Publicity Assistants.....</i>	<i>Shannon Gadoury, Brendan LeFebvre, Kevin McHugh, Elizabeth Mocko, John Neubauer</i>
<i>House Manager.....</i>	<i>Michael Propster</i>
<i>Ushers.....</i>	<i>Providence College Friars Club</i>
<i>Concessions.....</i>	<i>Friar's Cell</i>
<i>Sound recorded at.....</i>	<i>Red Dog Studio</i>
<i>Archive photography.....</i>	<i>Randall Photography</i>
<i>Poster.....</i>	<i>Sunrise Corporation</i>





# **SPECIAL THANKS**

## ***Members of the Fall 2000 Script Analysis Class***

*whose work on this play contributed significantly to this production*

***Steven Sears***

*Assistant Director of Resident Life*

***Harriet Pappas***

*Visual Arts Department*

***Peter Garofalo***

*Providence College Security*

***The Costume Collection***

## **PATRON INFORMATION**

Refreshments will be sold before the performance and at intermission.

Proceeds support THE FRIAR'S CELL,  
Providence College's student-run theatre group.

✱

In order to avoid disrupting the performance,  
patrons who leave the theatre after the show has begun  
will be asked to view the remainder of the act  
from the side balcony.

✱

The taking of photographs during the performance is strictly prohibited.

✱

Please mute all wireless communication devices  
or leave them with the House Manager.

✱

For your convenience, the River Avenue gate will be open  
before and immediately after each performance.

## BIOGRAPHIES

**Jamie Brink Grant** (*Lighting Designer*) Mr. Brink Grant recently moved to Providence from St. Louis, MO, where he designed lighting for dance and theater with a number of companies, including COCA, the New Jewish Theatre, and A-Trek Dance Company. He was the resident lighting designer for both Whitfield School and New Line Theatre, for whom he designed the first fully-staged version outside New York of Jason Robert Brown's "Songs for a New World." He has also worked at the Edison Theatre (St. Louis), Starlight Theatre (Kansas City), and Berkshire Theater Festival.

**David Costa-Cabral** (*Scenic & Costume Design*) David Cabral joined the Providence College faculty in the Fall of 1984 with a production of "Godspell" directed by Barry Marshall. He joined the staff as a one semester replacement, which developed into a tenure-track faculty position.

As a member of the Providence College faculty, David served as Managing Director of the Blackfriars Theatre and currently serves as the Chairman of the Theatre Arts Department. David received his MFA in Theatrical Design from Southern Methodist University in Dallas, Texas under the tutelage of Broadway design team William and Jean Eckert.

David is frequently invited to design in venues off-campus. Most recently, he designed the costumes for "Street Scene" at the Boston Conservatory of Music. A frequent designer at BCM, his recent credits there include: "Brigadoon," "Follies," "Side Show," "The Three Sisters," and "Bye Bye Birdie!" David spends his summers as the resident costume designer for the Walnut Hill School in Natick, Massachusetts, where he is responsible for the costume design for 7 productions in 6 weeks featuring 70 high school students: a feat of great magnitude. Among his favorite designs for the Blackfriars are "The Importance of Being Earnest," "Into the Woods," and "Macbeth."



## CHRONOLOGY

- 1521 King Henry VIII of England publishes *Defense of the Seven Sacraments*, a response to Martin Luther's *Babylonian Captivity of the Church*. Thomas More serves as a "sorter out and placer of the principal matters" for the work, which earns Henry the papal title "Defender of the Faith."
- 1527 Henry unsuccessfully petitions the Pope to declare an annulment of his marriage to Catherine of Aragon, on the grounds that, since she is his brother Arthur's widow, the union is incestuous. The king is in fact motivated by Catherine's failure to yield a male heir and by his desire for Anne Boleyn, a lady of the court.
- 1529 More is appointed Henry's Royal Chancellor. He replaces Cardinal Wolsey in this capacity, after the collapse of Wolsey's final attempt to obtain the annulment for Henry.
- 1533 With the blessing of his newly-appointed archbishop, Thomas Cranmer, Henry divorces Catherine and marries Anne Boleyn. More refuses to attend the new queen's coronation.
- 1534 The parliamentary Act of Succession declares that the new queen's issue will inherit the crown. An added provision demands a full repudiation of papal supremacy. More refuses to take an oath of assent to this Act and is imprisoned in the Tower of London. Later in the year, the Act of Supremacy officially declares Henry the supreme head of the Church in England.
- 1535 More is brought to trial on charges of high treason.

1536 Anne Boleyn is executed, ostensibly for adultery. Once again, the true motivations include the lack of a male heir and Henry's wandering eye.

1935 More is canonized by Pope Pius XI after beatification in 1886.

## ABOUT THE PLAYWRIGHT

Robert Bolt (1924-1995) was born near Manchester, England, where he earned a B.A. in history at the University of Manchester in 1948 after serving in the Royal Air Force during World War II.

He worked as a schoolteacher until 1958, when the success of his play *Flowering Cherry* (1957) enabled him to write full-time. *A Man For All Seasons* (1960) was his most successful play. Its productions in London and New York met with tremendous acclaim, including the Tony Award for Best New Play in 1962.

Bolt also established himself as an eminent screenwriter, penning the David Lean epics *Lawrence of Arabia* (1962) and *Dr. Zhivago* (1965), as well as an adaptation of *A Man For All Seasons* (1966).

His later work includes the play *Vivat! Vivat Regina!* (1977) and the screenplays for *The Bounty* (1984) and *The Mission* (1986).

SOURCE: *Britannica.com*

*Chronology and Author Biography by Brendan LeFebvre '01*



## PC THEATRE FACULTY & STAFF

<i>David Costa-Cabral</i> .....	<i>Associate Professor / Theatre Dept. Chair</i>
<i>John Garrity</i> .....	<i>Associate Professor / Managing Director, Blackfriars Theatre</i>
<i>Mary G. Farrell</i> .....	<i>Associate Professor</i>
<i>Fr. Kenneth Gumbert, O.P.</i> .....	<i>Associate Professor</i>
<i>Wendy Oliver</i> .....	<i>Associate Professor</i>
<i>Fr. Matthew Powell, O.P.</i> .....	<i>Associate Professor</i>
<i>Kate Ambrosini</i> .....	<i>Special Lecturer</i>
<i>Tom Dooley</i> .....	<i>Adjunct Professor</i>
<i>George Marks</i> .....	<i>Technical Director</i>
<i>Sue Spencer</i> .....	<i>Costume Shop Supervisor</i>
<i>Cheryl Barry</i> .....	<i>Theatre Department Secretary</i>
<i>Susan Werner</i> .....	<i>Blackfriars Theatre Secretary</i>

## FRIAR'S CELL BOARD

*President: Jessica Tabak '01*

*Public Relations: Michael Propster '03*

*Secretary: Patrick Cohen '01*

*Treasurer: Christina Furtado '01*

Get the best seats first!

### **THE BLACKFRIARS MAILING LIST**

offers advance notice of upcoming productions at the Blackfriars Theatre. You can even order tickets before they go on sale at the box office!

✱

To join the list, please fill out an address card at the ticket counter, call (401) 865-2218 at any time, or visit us at [www.providence.edu/theatre](http://www.providence.edu/theatre)

# UPCOMING EVENTS

## Theatre Department

### ***Picasso at the Lapin Agile***

*A comedy by Steve Martin*

*April 5-8*

### ***Spring Dance Concert***

*'64 Hall, Slavin Center*

*April 21-22*

### ***Three One Act Plays***

*Presented by The Friars Cell*

*April 27-29*



## Music Department

### ***Wind Ensemble***

*Guzman Chapel March 25, 3PM*

### ***Steven Darling Senior Recital***

*Guzman Chapel March 30, 7PM*

### ***Women's Chorus/High School***

#### ***Invitational***

*'64 Hall, Slavin Center*

*April 1, 3PM*





# **KENNEDY CENTER AMERICAN COLLEGE THEATER FESTIVAL**

*Presented and produced by the*  
**John F. Kennedy Center for the  
Performing Arts**

*Supported in Part by*  
**The Kennedy Center Corporate Fund  
The US Department of Education  
Delta Airlines  
The National Committee for the  
Performing Arts**

This production is entered in the Kennedy Center American College Theater Festival (KC/ACTF). The aims of this national theater education program are to identify and promote quality in college-level theater production. To this end, each production entered is eligible for a response by a regional KC/ACTF representative, and certain students are selected to participate in KC/ACTF programs involving awards, scholarships, and special grants for actors, playwrights, designers, and critics at both the regional and national levels.

Productions entered on the Participating level are eligible for inclusion at the KC/ACTF regional festival and can also be considered for invitation to the KC/ACTF national festival at the John F. Kennedy Center for the Performing Arts in Washington, DC in the spring of 2001.

Last year more than 1000 productions and 19,000 students participated in the American College Theater Festival nationwide. By entering this production, our department is sharing in the KC/ACTF goals to help college theater grow and to focus attention on the exemplary work produced in college and university theaters across the nation.

