

1968-69 WINTER SPORTS SPECIAL

SUBSCRIBER'S ADDRESS

THE COWL

PROVIDENCE
COLLEGE

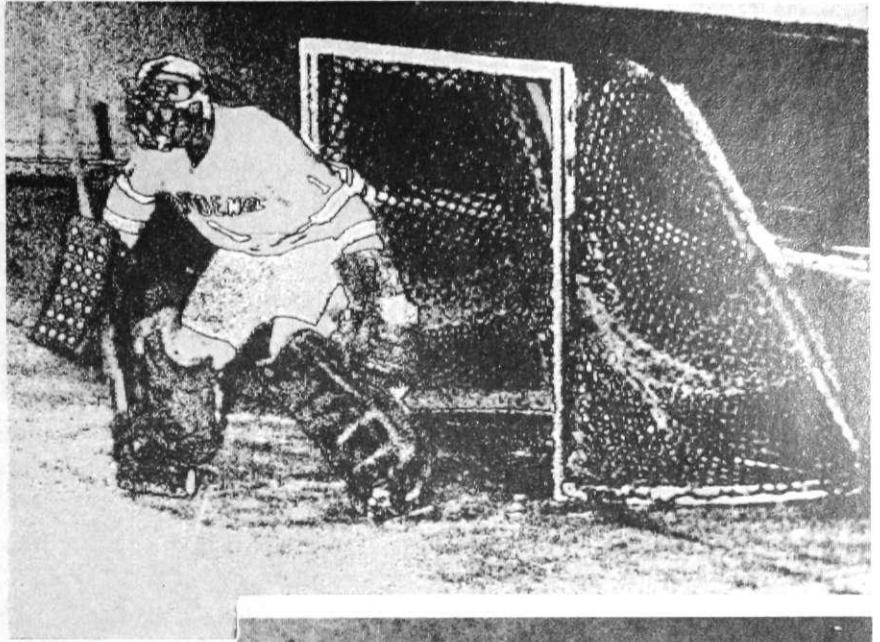
Follow
the
Friars

SPECIAL EDITION

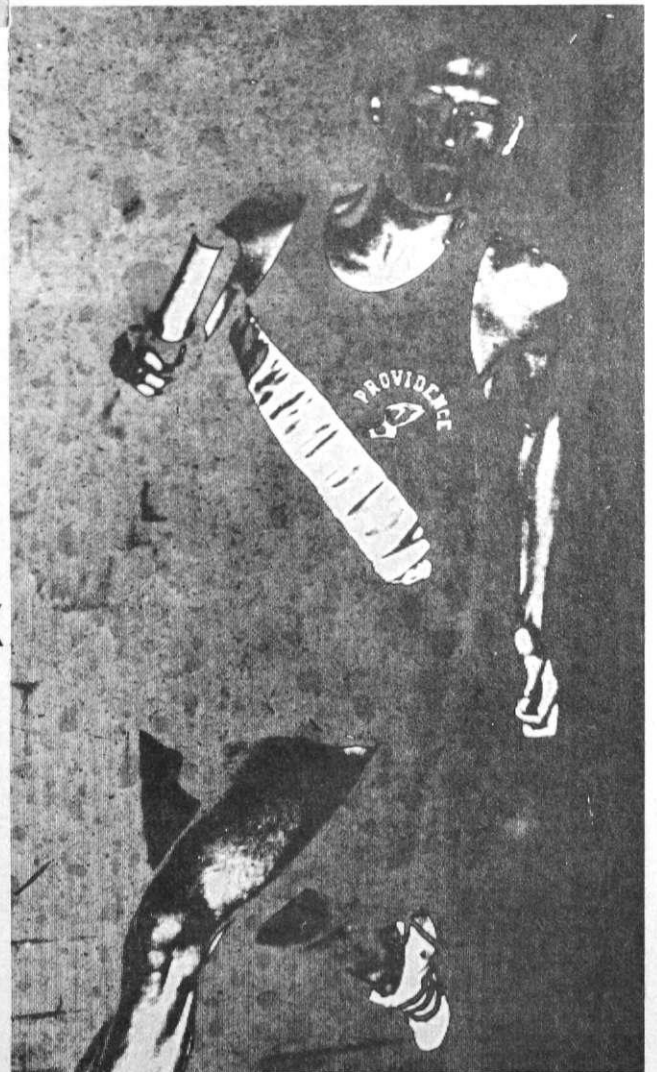
PROVIDENCE COLLEGE, PROVIDENCE, R. I., DECEMBER 5, 1968

EIGHT PAGES

FROM THE ICE
COVERED RINK . . .



TO
THE
TRACK



. . . TO THE
HARDWOOD COURT

UCLA's Wooden Answers 'Cowl' Reporter's Questions on Squad

By ED SKIBER

On December 27, 1968 the Madison Square Garden marquis will read — BASKETBALL, UCLA vs. PROVIDENCE. Although it is a tough break for the Friars to be confronted by the Bruins in the first round of the Holiday Festival, the honor to be playing against Lew Alcindor and Co. will be uppermost in the minds of each Friar.

The mastermind behind the powerful UCLA machine is a short, distinguished looking man named John Wooden. 20 years at the helm of the Uclans, Wooden has enjoyed unparalleled success in the last six years. Before 1964 the Bruin mentor was four national championship victories behind Adolph Rupp, the living legend of Kentucky basketball. With the advent of the 1968-69 season, Wooden has an outstanding chance to pass Rupp's record of four NCAA championships.

Well, one might say that with all that talent at Wooden's disposal, you or I could have accomplished the same. Such is not the case. Wooden is a superb strategist, psychologist, and developer of talent who has more than proven this claim.

The '64 and '65 champions were comprised of players not highly sought after during their high school days. Walt Hazzard, Gail Godrich, Keith Erickson, etc. became stars under Wooden's tutelage.

The Alcindor-led teams, of course, are a credit to Wooden's recruiting ability. However, all of the key members were outstanding performers in high school and were accustomed to a star's role. With the exception of Alcindor, no other Bruin averaged over 20 points per game.

Lucius Allen averaged around 17, but Wooden and many others classify him as one of the great guards of this decade. Who would believe it, judging by his "ordinary" point per game average alone. Allen, though, like the others, learned to play team ball because Wooden would have it no other way. The UCLA record was the result of a remarkable coordination of extraordinary individual talent.

I took it upon myself to write Coach Wooden in hopes of gaining a better insight into his coaching talents and the UCLA success formula. Although numerous questions entered my mind, here are the most significant.

Q. Generally speaking, what attracts so many top flight ball-players to UCLA?

A. A truly great university, a beautiful campus, wonderful climate, a tradition of fine basketball teams, a reputation of everyone receiving equal opportunity.

Q. Is your recruiting in one or two specific areas or are you basically unrestricted in recruiting?

A. Over 90% of our lettermen in the 20 years I have been here have come from southern California and almost all from greater Los Angeles. Out-of-state players have been attracted to us and have made the first contact personally or through their coach in almost every case. We have never carried over 18 players on scholarship at one time. Last year we had only one freshman on scholarship and this year we have two.

Q. The '63-64 team was NCAA champions and undefeated, but somewhat unheralded at the season's outset. What factors brought about this "dream" season?

A. Perfect teamwork. The five starters were all starters the year before in which they were one of the finest teams in the country during the last half of the season. None were highly sought after high school players for one reason or another and more-or-less came to us.

Q. What qualities transformed Walt Hazzard into an All-American and team leader?

A. Walt Hazzard was a great player for us all three years and was less erratic as a sophomore than most. He helped make every player on my team a better ball player because he could, and would pass which encouraged his teammates to work without the ball.

Q. Ken Washington was outstanding in the first two championship games, but ordinary in most other games. Why couldn't he develop his talents, or why was he so good in those two games?

A. If coaches could answer this type of question, they would be something more than merely human. Kenny never played well when started, but seemed to be able to "come in" and do well. However, I have had a number of players similar to that and feel that there is no valid explanation. Emotion must have something to do with it.

Q. Could you please relate to us the events that took place in the recruiting of Lew Alcindor.

A. UCLA was one of the five schools that Lewis Alcindor selected to visit. His coach notified me of this when he was a junior in high school. I never saw him until he visited our campus in April of his senior year and he told me UCLA was his choice when he left. He recruited us in every sense of the word, rather than our recruiting him. His coach helped him in the selection of the five schools he was to visit and made arrangements for each visit.

Q. The UCLA team was certainly more than just Alcindor. Could you mention the other key players and their attributes.

A. Shackelford — fine outside shooter who could help keep some pressure off of Alcindor.

Heitz — a fine team player who fit in well. Understood his job and performed.

Warren and Allen — one of the finest pair of guards in UCLA and NCAA history. Warren is a natural leader with great confidence who made the most of his ability. Allen is probably, inch for inch, as fine a basketball performer as I have ever seen.

Nielsen — a 6'7" rugged forward who fit in well when I brought him off the bench.

Sweek — a spirited hustler who could come in and stir up the action.

Q. Was there complacency at the start of last year, or was there evidence of Boston Celtic pride.

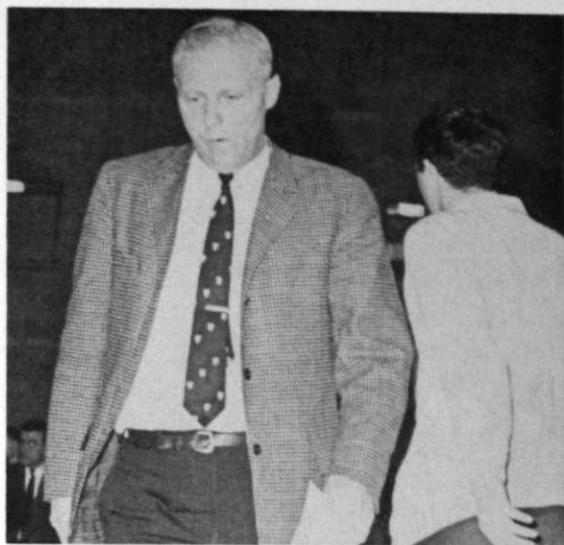
A. No complacency. The return of two players (Mike Lynn and Edgar Lacey) who had been out the year before complicated matters. Their inactivity had slowed them down considerably and yet they had been stars who

fit they should be playing all the time. Lacey might have been the finest all around performer I have ever had, when he was in condition, but we were better last year after we lost him.

Houston was an outstanding team and could beat anyone, even UCLA, on a given night. There are so many great players, teams and coaches today that it is incredible and almost impossible to have an undefeated season.

Q. Do you feel the second Houston game was one of the standout team performances of all time?

A. It was one of the most gratifying victories of my career, and an outstanding performance. (Continued on Page 3)



Lamoriello, Mullaney Set For Rebuilding Seasons

By JIM CRAWFORD

With the cold winds blowing across the leaf strewn campus of Providence College, it is again apparent to the spirited undergraduates that the apex of the athletic season is at hand. Indoor track, hockey and basketball are the keys that unlock the doors to excitement which will provide students and alumni with conversation material during the cold winter nights.

The purpose of this article is to better acquaint Cowl readers with the men who round these teams into cohesive units.

Ray Hanlon, the iron willed and unheralded coach of track and cross-country, has compiled a record since coming to Providence which ranks him with the finest mentors in New England. Hanlon, a 1951 graduate of LeMoyné College, was an outstanding undergraduate performer at his alma mater. He arrived at this institution after seven years of coaching at LeMoyné where his squads won eight conference crowns and over twenty individual gold medals including one at the famed Milrose Games in 1956.

Since coming to P.C. where he succeeded the great Hall of Fame Coach, Harry Coates, Hanlon has sponsored many meets to help foster the growth of cross country in the state of Rhode Island. It is not unusual to see Coach Hanlon out running with his squad because he believes in practicing what he teaches. His units are noted for their excellent physical conditioning and their fiery desire. Hanlon believes in taking the race to his opposition, thereby forcing them to keep pace or drop off. He has been very successful with this psychology.

Mr. Hanlon is also an instructor in the Education Department here at Providence and he holds a Masters degree in Education from Syracuse University.

In the realm of hockey we find a new regime with fresh and promising ideas. Succeeding Zello Toppazini as coach of varsity hockey is Louis A. Lamoriello. Lou graduated from Providence College in 1963 and played hockey and baseball in his undergrad days. In his senior year he captained the pucksters at forward and was the squad's leading scorer. He has been coaching freshman hockey

at P.C. for four years compiling a 39-30-3 slate. During the "off-season" Mr. Lamoriello supervises teams in the Cape Cod Baseball League and the Canadian Semi-Pro League.

In preparing his men for this season, Lamoriello has started from scratch with basic fundamentals. He has stressed physical fitness and his teams are subjected to long arduous hours of fitness drills. Due to last year's poor showing on defense Lou has worked hard to remedy the porous Friar secondaries of the past. Coach Lamoriello has said, "We are not looking to the past, this team will only look forward." His basic philosophy is to field a sound club with the intent of capitalizing on the opposition's miscues. Along with the spirit and desire Mr. Lamoriello has brought to his new assignment, he has a freshman squad that went 14-5 last year. Although riddled by various unfortunate situations this added sophomore support should bolster the returning lettermen.

Coach Lamoriello promises nothing, only that his squad will be a hustling unit and determined to prove themselves. It's a long climb back but one cannot help but think that if only half of Lamoriello's enthusiasm rubs off on his men that it won't be long before the laurels are brought back to P.C. hockey.

Saving the fireworks to last we now come to the always dynamic and always exciting Joe Mullaney. Starting his fourteenth season at the helm of the Friars, he has amassed a 275-89 tally. His teams, for nine consecutive seasons, were invited to post season tournaments including three NCAA clashes and six NIT bids. His charges won the NIT in 1961 and 1963. Among Mullaney-coached players who have received national honors are Lenny Wilkens, Seattle Supersonics; John Egan, Los Angeles Lakers; and Jimmy

Walker, currently with the Detroit Pistons.

Mullaney, a native of Elmhurst, Long Island, attained basketball prominence at Chaminade High School in Mineola, New York. After four years in the Air Force during World War II, he entered Holy Cross and in 1947 he captained the Crusaders to the NCAA championship. After a brief stint with the Boston Celtics Mullaney served with the F.B.I. as a special agent. In the fall of 1954 he initiated his coaching career at Norwich University in Vermont. The following year he came to Providence.

Mr. Mullaney has been named coach of the year in New England three times and coach of Rhode Island on three different occasions.

In a telephone interview with Stan Ward, head coach at Brown University and a man who has sent more teams against Mullaney-coached squads than any active coach, he hailed Mullaney as an "outstanding personality, coach and gentleman." Ward felt that all Mr. Mullaney's teams were defensively sound and that their offense was styled to suit the players. He sighted the fact that when Coach Mullaney first came to P.C. his teams were basically ball control clubs looking for the high percentage shot. However, in the late 50's when the big guns checked in they moved to the fast break. Coach Ward felt that defense was the key to Providence's success but he also expressed the opinion that he "had never seen a better running ball club than the one headed by Vin Ernst, with the exception of the Rick Barry, Miami contingent."

A tribute to Joe Mullaney is his excellent ability as a recruiter. This shows that promising high school stars feel that at Providence they will receive the finest in basketball tutelage. His teams over a span of ten seasons from 1957-67 were ranked second in the country in winning percentage.

All in all it looks like the cold winter days at Providence College will be hot with the blood of falling victims if this trio of mentors get their way.

Hoopsters Exhibit Depth; Season Opener Tonight

By ED SKIBER

The first chapter in Joe Mullaney's rebuilding plan begins tomorrow night at Alumni Hall, when the youthful Friars take on a scrappy Assumption quintet.

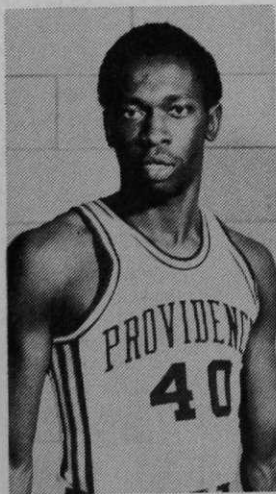
In preparation recently, the team met Dave Gavitt's Dartmouth Indians in a series of two scrimmages. The team performed creditably in all phases, but a starting line-up, which appeared to be all but set, is now up in the air once again. On the basis of great performances, or the lack of it, certain players moved up, while others moved down.

Whoever Mullaney starts tomorrow, it is unlikely that this combination will remain fixed. The veteran coach has more talent, at least offensively, to choose from, and with a renewed spirit so obviously lacking from last season, the Friars should improve in point production, victories and, hopefully, student and community appeal.

Taylor Walsh Sr., 6'3", 205 lbs., Chevy Chase, Md. A strong forward, Taylor has shown a good outside shot (with either hand) in drills. Taylor is slated for a reserve role, but his presence will keep the starters mindful of their duties on the court.

Walter Violand Jr., 6'1", 195 lbs., Lakewood, Ohio. Walt has all the tools to be a great player. Walt is amazingly strong and durable, and his strength and leaping ability make him a rebounding threat. If his shot comes around, there's no way he can remain on the bench this year. A typical Ohio ballplayer — good passing, tight defense.

Craig Callen Jr., 6'5", 215 lbs., Warwick, R. I. Craig averaged five points a game last year, but is almost certain to double it this year. Has improved his shooting from beyond 15 feet. Craig is big and strong, and uses his body effectively to pick off opposing defenders. Must handle much of the rebounding if the Friars are to win.



Gerry McNair Jr., 6'5", 205 lbs., Roxbury, Mass. At times last season, Gerry flashed signs of brilliance, but offensive inconsistency hurt him. Gerry is still a formidable shot blocker thanks to his great timing and leaping ability. Could be team's most effective rebounder if he works at it. Has shown better moves to the basket.

Charles Conway Jr., 5'11", 170 lbs., Hartford, Conn. Jay was a reserve guard last year, but he

is always respected for his outside shooting and hustling defense. Impressed many during his freshman campaign with shooting, passing and pressing defense.

Dennis Walsh Jr., 6'5", 180 lbs., Bayside, N. Y. Dennis is a transfer from South Texas J.C. Has demonstrated that he is adept at the run and shoot style of play, but is easily conforming to Mullaney's successful patterns. Has a devastating running hook and is potent from 20-30 feet out. Agile on defense for his height. Will be excellent against zone defenses.

Ted Haig Jr., 5'10", 160 lbs., N. Y. Ted sat out last season after transferring from Hawthorne (N. H.) College. Has beautifully fluent moves, dribbling and passing the ball. Good spring for his size. Can get hot from the outside, but needs a more consistent shot to see considerable action.

Jim Larranaga, Soph., 6'4", 185 lbs., New York, N. Y. Rated one of the nation's top newcomers, Jim will probably take charge of the team's offense. Larry does it all; excellent shot from anywhere on the court, deceptive moves with the ball, pinpoint passing, good moves without the ball. Has adjusted to Mullaney's combination. His presence will bolster the team's point production, and should keep the stands filled.

Vic Collucci Soph., 6'22", 185 lbs., Newark, N. J. Vic fits into the tradition of outstanding guards at Providence College. Averaged 22 points as a frosh with a quick, but soft touch from the left side. His defense isn't as outstanding as his shot, but it's effective enough. Should lead the fast break with the "Havlicek touch," a 20 footer instead of a lay-up.

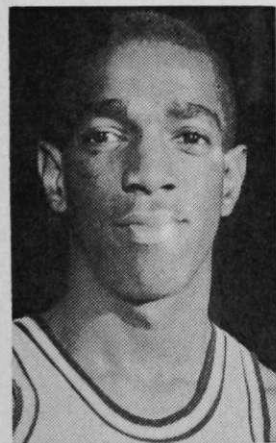
Joe "Junior" Ferro Soph., 5'9", 150 lbs., Bristol, R. I. Junie, undoubtedly, is the team's finest passer. Throws around the back, over the head, between the legs, etc. Is also extremely accurate from up to 30 feet out. His quick

moves and tricky passing will stir up the offense whenever it starts to lag. His size hurts him on defense if taken low, but Junie has played against taller men all his life, and is a smart defender.

Ray Johnson Soph., 6'7", 230 lbs., Narragansett, R. I. Ray sat out last year to concentrate on his studies, and is just starting to round into top playing shape. Ray is the tallest and strongest of the Friars, and if he can use his influence under the boards, it will be a tremendous asset for the team. Must score underneath and/or draw fouls.

Mike McGuinn Soph., 6'4", 195 lbs., East Providence, R. I. Mike played in the shadows of the four top scorers on the frosh squad; that is, if you don't recognize rebounding and unbounded desire. He bulled his way underneath to lead the team in rebounding. Scores primarily from up close. A hustler on defense, and steady all around.

Bill Connell Soph., 6'4", 195 lbs., Montclair, N. J. Did not show much as a freshman, but has improved immensely in all phases during the fall workouts. Likes to shoot occasionally from the outside, but is more valuable under the boards. Great timing adds to his rebounding effectiveness.



AL HAYES, Missing Link in Friar Attack.

UCLA . . .

Continued from Page 2) formance, but not the best from a technical point of view. We were confident, prepared, conditioned and completely ready to function as a team and prove to ourselves that the Astrodome game was merely "one of those things."

Q. Do you feel the '68-69 Bruins will be hurt without the services of Lucius Allen?

A. Yes. We have no experienced guard and Lucius is a great basketball player.

Q. Why is your zone press so effective?

A. It exploits the fact that we are usually better conditioned than most of our opponents. I rely on quickness with balance in all phases. We are geared to change quickly from offense to defense and defense to offense. It is easier to change the defense slightly to disrupt the offense than it is to change the offense to attack the change of the defense. It uses much valuable time of the op-

ponent to devise and teach a proper attack against the press, and it preys on the weaknesses of human nature.

Q. Do you do anything unique to improve the conditioning of your players?

A. At least 50% of our practice time, and usually more, is spent on fast moving fundamental drills. Quick starts, stops, changes of pace and direction are stressed at all times. We run from one drill to another and attempt to utilize every second.

Q. Do you think the highly controversial no-dunk rule is justifiable?

A. I think the "dunk" rule was aimed at UCLA and Alcindor by the "lobbying" of a couple of name coaches. It may have a chance of being rescinded when he (Alcindor) has completed his eligibility. I never saw an injury or a goal or board damaged from dunking and the rule has deprived the fan of a great thrill.

Trained Runners Try for Records

By JAY ROMASCO

Coach Ray Hanlon and his Friar thinclads initiate the second stage of their year's running program on Dec. 12 as they travel to the Coast Guard Academy for the first meet on the winter Indoor Track schedule.

The cross-country season having been completed with the NCAA championship race on Nov. 25 in New York City, the Friar runners have since been working out on the board track—a 160-yard oval contrivance with stiffly banked turns, requiring eleven laps to the mile and demanding more than ordinary sense of coordination and equilibrium for the best possible effort.

The trackmen take up the "indoor" season in an unorthodox manner, however, since all preparations for the meets are made outdoors. There are no indoor track facilities at P.C., with the result being that thermal "long Johns," hood, gloves, toques, and numerous sweat-shirts become the by-words for Hanlon's men from early December until April. The only heat that runners are apt to feel on wintry afternoons is most likely to emanate from their own bodies. Consequently, there is no place on the indoor squad for one who does not like to run; Rhode Island winters are too long and cold, and there are no conspicuous rewards anyway.

This season's squad looks to continue some of the record-breaking efforts of the 67-68 ensemble. Among the competitors, most of which are carry-overs from Coach Hanlon's cross-country program, are the following:

PETER BROWN, '69, Flushing, N. Y. A member of last year's crack 2 mile relay team (Pete ran a 1:55½ mile leadoff leg), Brownie also has a 4:13 mile to his credit. Pete has fine speed, and looks to put his mile time under 4:10 this season.

ROBERT CROOKE, '69, East Northport, N. Y. Bob ran another of the 2 mile relay legs in 1:54. He has run a fine 9:02 two mile, and looks to break the nine minute barrier this season. Bob is a seasoned competitor; he is at his best when it counts.

THOMAS DUNN, '70, Utica, N. Y. Tom missed the most part of last season due to a bout with mono, but still managed to do a 9:40 two mile. The powerful junior never backs down and his times should descend accordingly with a full season of training.

JOHN GRANGE, '69, Elm-

hurst, N. Y. The third senior on the squad, John has good ½ mile speed (1:56). "Granger" hopes to make his fourth season on the boards his best yet. He should have a spot on the 2 mile relay.

WILLIAM KIVLEN, '71, Albany, N. Y. Bill is a smooth-striding soph who has run the quarter in 50.0 and has gone under 2 minutes in the ½ consistently. Bill looks to break 50 this season; should be the main cog on the mile relay team.

RAYMOND LABONTE, '70, Beverly, Mass. Ray has deceptive speed along with good endurance which together have given him a 9:05 two mile clocking and a fine 4:15 mile time as a sophomore. Ray expects to lower both times this season and has the stuff to do it.

RONALD LOUGHLIN, '71, Huntington, N. Y. A small but determined soph, Ron was part of last year's frosh mile relay team and has also run a 4:25 mile. Ron ran a strong fifth man in cross-country this past season and expects the endurance to carry over into indoor.

THOMAS MALLOY, '70, Stamford, Conn. An omnipresent 9:15 two-miler, Tom has become a mainstay on Coach Hanlon's squads. With the strength of a two-miler and 4:19 mile speed, Tommy could also be a permanent member of the 2 mile relay team.

MARTIN ROBB, '70, Syracuse, N. Y. A well-conditioned junior, Marty was captain of the 1968 cross-country squad. Marty had the best individual indoor season last year and looks for even better things in 68-69, aiming primarily at lowering his 9:06 time in the deuce.

JOHN ROMASCO, '71, Uxbridge, Mass. A seasoned road-runner with good strength, Jay was a member of last season's frosh mile relay team in his first year on the boards. Jay will look primarily to the two mile this season.

CHRISTOPHER SCHULTZ, '71, Schenectady, N. Y. Chris' main asset is good speed, and coupled with his developing endurance this should give him a much better than average time in the mile or two mile. Chris could possibly be used as a ½ miler this season; he has done 1:58 in high school.

RICHARD URSONE, '71, Stamford, Conn. Primarily, but not necessarily a speed merchant, Rich will be a mainstay on the mile relay team this season. Battling back from injuries last year to earn a place on the squad, Rich also looks for consistent sub 2 minute clocking in the ½ mile.

PROVIDENCE COLLEGE
BLAZERS
Available



285 Weybosset Street
Providence, 421-7626

1383 Warwick Ave.
Warwick, 463-9191

**GO CRAZY
FRIARS**

Carolan Club

**BEST OF LUCK IN
THE COMING SEASON**

Class of '69



THE 1968-69 BASKETBALL FRIARS

SUCCESS TO THE FRIARS

Class of '70

**BEST OF LUCK
TO THE FRIARS
DURING THE 68-69 SEASON**

Veritas Staff

SUCCESS TO THE ICEMEN AND HOOPSTERS

Class of '71

Gentlemen:

Our return from the Thanksgiving vacation signals the beginning of the winter sports season. I believe our student fans can expect a season of great entertainment, and many sports thrills. Each of our winter sports teams faces unusually challenging and demanding schedules. Yet you may be sure that, win or lose, every man on every squad will be doing his best and so deserving of student support.

The student newspaper is a powerful means of arousing and maintaining student interest in the College sports program. Your Athletic Association at Providence College appreciates the excellent assistance of "The Cowl" in this respect. The current issue of the winter sports edition is but another instance of the cooperation and service of "The Cowl." The Athletic Association is indebted to the sports staff of "The Cowl," and grateful for its efforts on behalf of P.C. sports.

Sincerely,
Aloysius B. Begley, O.P.
Director of Athletics



THE 1968-69 HOCKEY FRIARS

Follow the Hockey Friars
Home and Away
on WDOM

Courtesy of
Shipyard Drive-in
E. P. Fournier Rambler

**LET OUR FIRST
BE YOUR BEST**

Class of '72

Prospects Good For PC Pucksters

By KEVIN BOWLER

Bob Badyk Soph., Calgary, Alberta. Sophomore forward who can be used at right wing as well as his natural position, center. A steady performer with good moves especially one on one. He has a good wrist shot and will be counted on as being one of the regular forwards.

Dalton Barnoff Soph., Montreal, Quebec. Left defenseman up from the frosh team. Has a good shot from the point and can be used on the power play as shown by his assists last year. He is an aggressive defenseman who doesn't mind body contact.

Jean Boislard Jr., Sherbrooke, Quebec. The "policeman" type of defenseman who started as a sophomore last year. Jean is a fine skater who can rush the puck when necessary. Also has a good wrist shot as well as slap shot from the point.

Chris Byrne Sr., Milton, Mass. Captain of this year's team. Chris has shown great leadership with his constant drive and hustle. A left wing with exceptional skating ability and a fine wrist shot. He is a fine two-way player and will be counted on heavily.

Fred Costello Sr., Providence, R.I. Former all-stater from La Salle Academy. One of the few returning regular forwards from last year. A center iceman who shoots lefthanded and has a quick shot. His greatest asset is his positional play.

Richard Johnson Sr., Woburn, Mass. A right wing having an above average shot, both wrist and slap. One of the biggest forwards at 6'1", 200 lbs. Richard could prove to be one of the pleasant surprises after a fair junior year.

Mike Leonard Jr., Scottsdale, Arizona. Back for his second year on the varsity, Mike was one of the most consistent performers last year. Besides playing on a regular line, Mike is also used as a penalty killer. He has a quick low shot and is a great asset with his strong desire and hustle.

John Marchetti Soph., Wellesley, Mass. One of the three soph defense men on the team. Former Bay-State all-league player. John is fighting for a starting job and being a good skater can also play forward if necessary. He is a right shot.

Ron Martel Sr., Danvers, Mass. One of the three returning defensemen, Ron has been working very hard and should gain a regular spot this year. Has a good shot from the point and last year his goal defeated Northeastern, 2-1.

Gerry Murphy Sr., Lewiston, Me. Senior wing who came determined to win a regular spot after being a spare forward for the past two years. He has succeeded in doing so and will be one of the regular left wings. As a freshman he was both captain and leading scorer.

Rick Pumpie Soph., Lachine, Quebec. A 6'2", pound center who captained and lead last year's freshman team in scoring. Also broke the frosh scoring for both goals (38) and points (71). Has all the qualities of becoming a great one. Does everything exceptionally well. Will

be used on power plays and killing penalties as well as his regular shift. Rick, besides having great ability has a great attitude and is a fine team player.

Henry "Skip" Samson Jr., Stoneham, Mass. As a freshman he led the team in scoring and last year, lead the varsity. A right wing with all the tools of a good hockey player. Will be counted on heavily in the scoring department. Also teams with Leonard to form a great pair of penalty killers.

Jack Sanford, Jr., Milton, Mass. As a freshman goalie he had an amazing 1.89 average in 19 games and last year won the starting position as a sophomore averaging 42.1 saves per game. Has a great glove hand and is at his best when the pressure is on. A dedicated athlete who could become a great goalie.

Tom Sheehan Soph., Warwick, R.I. Former La Salle all-stater and New England Tourney M.V.P. Broke freshman assist record with 35. One of the quickest forwards on the team. Has all the tools of being an exceptional college player. Will also be used on power plays and penalty killing.

Brian Smiley Jr., Montreal, Quebec. Last year was one of the most promising sophomores but an ankle injury limited his action. Has potential of being a great defenseman and seems to have found himself this year. He is the key to the defensive corps. Will play the point on the power play. Also can carry and rush the puck like a forward.

Phil Souza Sr., Cotuit, Mass. A senior playing varsity for the first. Phil has worked hard in pre-season practice and could gain a regular position before long. A left wing with a good shot.

John Tibbets Sr., Charlestown, Mass. A letterman last year who will be centering one of the top lines. Has fine potential and is an exceptional playmaker. Has the rare extra sense of anticipating plays. Another one of the keys to what success the team has.

Harry Towne Sr., Providence, R.I. A local high school product from Hope High. Has been work-



Coach Lamoriello and five Rhode Islanders: Harry Towne, Fred Costello, Tom Sheehan, Ray Warburton and Frank Trudeau.

ing very hard. Will be used at both defense and forward. Has a great attitude and keen hockey sense.

Frank Trudeau Sr., Woonsocket, R.I. Former all-state goalie from Woonsocket High. Was regular as a sophomore averaging 31.5 saves per game. Has been working very hard in practice and is battling for the starting job. Has all the tools of a fine goalie.

Ray Warburton Soph., Warwick, R.I. Local boy from Pilgrim High. Most improved player on last year's frosh team. A six footer who is at his best in a one on one situation. Strictly a defensive defenseman. Also had only 19 minutes in penalties while playing regularly in 19 games last year.

Coach Optimistic Over Improved Team

With the number of outstanding sophomore prospects which we have, we hope to improve on last season's disappointing 7-18 mark.

I have been optimistic about this team, and I believe they will do reasonable well, in spite of our difficult schedule. The chief reason for my optimism is an outstanding sophomore, Dick Pumble, who broke all freshman scoring records last year. In nineteen games he scored 38 goals and 33 assists, for 71 points. A local boy Tom Sheehan also broke all freshman scoring records with 23 goals, 35 assists, for 58 points.

In addition, we have 12 returning letterman to give experience to the squad.

BEST WISHES IN
THE COMING SEASON

The Dillon Club

BEST WISHES

To the Hockey and Basketball Teams

From

THE FRIARS CLUB

1968-'69 Hockey Schedule No Pushover for Skaters

By JOE DELANEY

The 1968-69 Friar Hockey squad, under the direction of Lou Lamoriello, opened strongly at Brown's Meehan auditorium on Saturday, starting their 22 game slate. The Friars, attempting to rebound from last year's poor record, will be facing some stiff competition throughout the campaign, meeting six of the eight teams that compete in the E.C.A.C. Championships in Division One. No pushover schedule, to say the least. Highlighting the slate will be some of New England's finest: Boston University, Boston College and company. This is how things shape up:

NORTHEASTERN — Away — Dec. 12; Home—Feb. 6

The Huskies will be looking to erase last season's 12-14 record. Graduation losses hurt and a so-so freshman squad won't bring relief. A stronger defense is needed, but at home they are tough.

OHIO UNIVERSITY — Home—Dec. 19

A new rival for the Friars. This loaded squad could prove a little too strong for any New England foe. The Ohioians features a balanced offense but need a leader and a dependable goalie.

UNIVERSITY OF VERMONT—Home—Jan. 8.

The Catamounts wound up 4-15 under Coach Jim Cross. Junior Jeff MacLaughlin, a center, knows how to find the net along with sophomore George Minarsky. They lack depth and on defense, size, except for junior captain George Kreener, who is their "policeman." No great improvement seen.

COLGATE—Home—Jan. 10

The "Red Raiders" will have 12 lettermen back from a 12-15 team. Coach Ryan expects fine scoring from right wing Tom Carl and center Mike Babcock, both Ontario natives. On defense should be strong but on offense will lack needed depth and size. Should finish over .500 though.

BOSTON UNIVERSITY—Away—Jan. 23; Home—Feb. 13

Coach Jack Killey has 13 lettermen back from a 10-9-3 squad, led by All-American Herb Wakabayashi and George Boily, also Mike Gray. Looks solid on offense, appear to have more overall depth and experience than last year. Much will depend on progress of sophomores as well as improvement of opponents. Could upset Cornell as East best.

YALE—Away—Jan. 25

Bulldogs were seeded number five in the E.C.A.C. in 1968. 13-9 last season, they will be depending on returning lettermen to bolster their defense. Lack of a good net minder and consistent scoring punch might hurt. Could come on strong and gain playoffs, however.

PRINCETON—Away—Jan. 19

The Tigers coached by Bill Quackenbush, former Bruin (NHL) captain, just missed E.C.A.C. playoffs in '68 despite topping the Eagles of Boston College. Squad is well balanced but no high scorer may mean another playoff miss. Could play spoilers role.

ARMY—HOME—Jan. 31

Last season the Cadets finished over .500 (15-11), but in Division I they were only 5-6. Captain Brian Maker, with 26 scores and 35 assists, is back. Defensemen are the biggest problem along with size and a schedule. Will be tough for the Friars though.

NEW HAMPSHIRE — Away — Feb. 5

Only six graduated from last years 18-7 team. The Wildcats have two of their three lines intact, a top goalie in Rich Metzger and defenseman Graham

Bruder. They can score but will receive no help from sophomores of a gruelling 23 game slate that includes holiday tournaments. Playoffs are a good bet if everything goes as seen.

BOSTON STATE—Away—Feb. 15

Rebuilding after 4-13 under coach Barry last year. Forward Wayne Starkey will attempt to lead a so-so offense while defense may improve. Last year they yielded 104 tallies. Could be tail ender in Division II.

BOSTON COLLEGE — Home — Feb 17; Away—Feb. 28

The "Eagles," coached by Jack "Snooks" Kelly, will once again dominate the East. Eighteen lettermen are back, giving the coach plenty to smile about. A great rival of the Friars, they will be led by Jim Prevett at right wing and junior center, Tim Sheehy, one of hockey's most sought after schoolboys a few seasons back. Senior goalie,



Princeton Puckster Co-Captain Jerry Kearney

George McPhee, second best in division I last year, will again be in the nets. They are strong, with depth and size on offense and defense. Will give Cornell and Boston University stiff competition.

BOWDOIN—Away—Feb. 22

Polar Bear coach Sid Weston, 8-5, has 16 back. This squad could be a Division II surprise. All American Kenneth Martin is on the small side, 5'10", 180 pounds. They are well balanced, but small. Goalie John Krol could lead team to playoffs.

R. P. I.—Home—Feb. 26

The Engineers, with a 10-14 mark last season, could return to power in the East in the near future. Coach Harry Kearns has 16 lettermen back. Last year they upset Michigan Tech, Harvard and B.U. Seniors Colin Ingham and Brian Dickey lead a rugged defense. Ten Canadians are on the squad, led by junior All-American candidate Dale Wetson, who led the nation in scoring in 67-68 with 65 points. This is a tough Division I club.

CLARKSON—Home—March 1

Len Ceglarski's Golden Knights were sixth ranked in last year's E.C.A.C. The young squad has only three seniors. Along with a lack of size on offense and strength on defense



B. U. Front Line of Boily, Wakabayashi and Gray

they hurt in the checking department. Line of Bill O'Flaherty, Tom Oeacon and Rich Magnusson should provide scoring punch. Wing Greg Louis,

from Ontario, should lead scorers. If injuries stay away and they keep hustling it should mean the playoffs. A lot depends on their schedule also.

VIN PAPI
FROM
THE



SPORTSDESK

This year is a rebuilding one for the Friars, yet it holds the promise of a bright outlook for the Friars winter sports scene. The pucksters and hoopsters have quite a few promising young sophomores in the lineup and the freshman squads could be the best in the school's history. It all adds up to one thing, a bright outlook for the Friars in the upcoming years.

Lou Lamoriello has shown he can coach and he has some great material, including soph Rich Pumble, who broke quite a few records last year as a frosh. On the hardwood court, Jim Larranaga, heads a group of promising sophs.

The purpose of this sports special is so that we might make the season a little easier to follow as a fan. We've attempted to highlight the upcoming seasons with a look at schedules and the players, now its up to you to turn out and support two exciting sports. Try it and see if we were right when we say that for the Friars, the road is leading Up . . .

College Relations Director
c/o Sheraton-Park Hotel, Washington, D.C. 20008

Please send me
a Sheraton Student
I.D. so I can save up
to 20% on
Sheraton rooms.

Name _____
Address _____

Reservations with the special low rate are confirmed in advance (based on availability) for Fri., Sat., Sun. nights, plus Thanksgiving (Nov. 27-Dec. 1), Christmas (Dec. 15-Jan. 1) and July through Labor Day! Many Sheraton Hotels and Motor Inns offer student rates during other periods subject to availability at time of check-in and may be requested.

Sheraton Hotels & Motor Inns 
Sheraton Hotels and Motor Inns. A Worldwide Service of 177



Senior Goalie Steve Holahan

BROWN—Home—Feb. 19

The Bruins of coach Jim Fullerton will be trying to improve upon a mediocre 7-8 record. Fullerton, with co-captain and leading scorer, Wayne Small departed, will have a veteran squad of 13 lettermen returning, 9 of whom hail from Canada. The wing slots are expected to provide consistent scoring punch. Success may depend, however, on All-American defenseman candidate, Curt Bennet of Cranston. The Bruins should make playoffs if team performs to potential and no serious injuries crop up.

MERRIMACK—Home — Dec. 3; Away—Feb. 8.

This is date night at the auditorium. Merrimack with an 11-8 record last season, made the Division II playoffs. They will have a large number of lettermen returning and will be spearheaded by forward Les Niemi, leading scorer, from Ontario. Also senior wing Tom Gross will be in there. In the cage they are strong with Mike Sackeki and Steven Langona, both in the top five of their division. Could be a surprise.

ST. LAWRENCE — Home—Dec. 6

The Larries of George Menard were in the E.C.A.C.'s in '68 with a 16-6-1 mark. Nine lettermen graduated, but 8 starters are returning, including forwards Peter Slater, Alan Davis and Bill Wilkinson. The New Yorkers, loaded with Canadians should be strong. This is a must game to see.

Friar Five Face Schedule Highlighted by U. C. L. A.

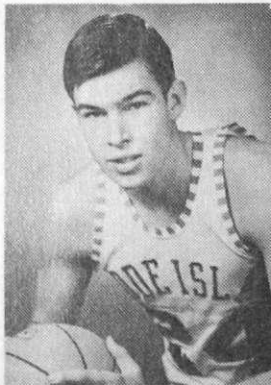
Friar basketball will face its strongest schedule ever this campaign. The '68 edition of P.C. basketball features two newcomers, Dayton and the University of California at Irvine. The Friars also have an engagement in the Holiday Festival against UCLA. Included in this year's schedule are six teams that stand a solid chance of attaining twenty or more victories. They are: UCLA, Dayton, St. John's, Villanova, St. Bonaventure and Duquesne. Also on the calendar are key contests against Boston College, St. Joseph's and Niagara, plus traditional encounters vs. Brown and URL.

Assumption—Dec. 5, Home

The Greyhounds always promise to be a formidable adversary for the Friars. Gone from last season's squad is Tommy O'Connor, who in four years scored over 1,000 points. Eric Inaun, last season's top scorer (14.7) and MVP is back. The big question mark for the Greyhounds is the playing status of Captain Bob Boule, who sat out most of last season with a knee injury.

St. Francis—Dec. 7, Away

The Terriers are always tough on the Friars, especially in their New York arena. On paper, St. Francis doesn't appear very talented. Last year's squad posted a miserable 7-16 record. There is plenty of room for improvement! Top man for the Terriers is John Conforti (17.0). Best of the sophs is Earl Roberts, 6'7", who should help with the rebounding.



Ram Junior John Fultz

Rhode Island—Dec. 12, Away

The loss of Art Stephenson and Larry Johnson will prove costly to first year coach, Tom Carmody. Rhode Island will not duplicate last year's 15-11 performance. The key to a successful season is in the hands of sophomores Ed Malloy, a 5'6" guard, and Bud Hazard, who paced last year's freshmen to a 14-3 mark. Hazard stands 6'7" and will team with junior John Fultz (6'6") up front. Veterans Joe Zaranka and Leon Mintschenko are probable starters, though pressed by three junior college transfers.

Brown—Dec. 14, Home—Mar. 4, Away

The Bruins' record of a year ago was 9-16. Four starters are lost from last year's all-star cast. Needless to say, the Bruins won't make the nation's top 100. However, 20 losses are in sight along with the cellar in the Ivy League. Lone returnee is Bob Purvis (6'4"), the captain. He'll be joined by a starless group of sophomores, none of whom are worth mentioning.

St. John's—Dec. 18, Away

John Warren (15.7) and Joe Depre (12.2), last year's two top scorers, will make things interesting. Also back from last season's 19-8 NCAA club are 6'9" Dan Cornelius, Carmine Calzonetti, Richie Jackson, Ralph Abraham and Jim Smyth, all seasoned performers. The rebounding will have to improve if the Redmen are going to match last year's performance. Four talented sophs, led by guard Pete LaMantia, will soften the burden of a murderous schedule that includes Davidson and Notre Dame. . . a

Dayton—Dec. 21, Away

Don May, 1968 consensus All-America is gone. However, the Flyers return an outstanding array of ballplayers, led by 6'10" Dan Obravac, 6'8" George Jenke, 6'6" Trinidad JC transfer Tom Crosswhite and 6'5" soph Ken May, brother of Don. Ken led the freshmen in all departments and is considered a better shot than his brother. The rebounding is strong and the bench will be the best in recent years, which should make Coach Mickey Donohue's job a pleasant one. The Top Ten and NCAA tournament are within grasp.

U.C.L.A.—Dec. 27, Holiday Festival

The Uclans will destroy the Friars and most everyone else they face this season. John Wooden will achieve an unprecedented third consecutive NCAA championship. Mike Warren, Lucius Allen and Mike Lynn have departed from last year's championship squad. No matter—Alcindor, Shackelford, Heitz, Sweek, Patterson and Neilson return. Up from the frosh is Curtis Rowe, who scored at an average of 32.6, while snaring 18.5 rebounds per game.

California at Irvine—Jan. 2, Home

Little information is available as to the strength or weakness of this California invader. Irvine does not play major college competition on a large scale. For the most part, the schedule consists of numerous small college west coast rivalries. The Friars will be a solid favorite in this contest with the home court advantage a decisive factor.

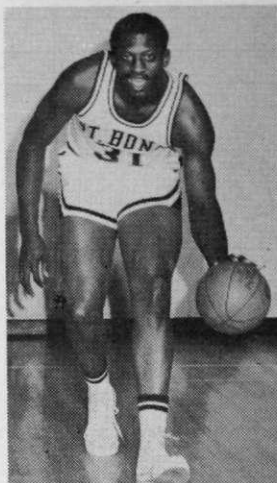
Canisius—Jan. 4, Away

The Golden Griffins will improve last years dismal performance. Tony Masiello (17.0) will lead Canisius to a .500 record. Joining him in the backcourt will be Roger Brown, who averaged 11 pts. a game last year. 6'6" Tom Pasternak handles the rebounding. An important factor in this matchup is the home court advantage. The Friars never seem to fare very well in Memorial Auditorium.

St. Bonaventure—Jan. 7, Home

The Bonnies fashioned their best record (23-2) last season since the Stith-Crawford era. The road to success will be hard earned this year. Chief loss is All-East selection Bill Butler, the third highest scorer in Bonnie history. Top asset is 6'10" All American Bob Lanier, who will break most of St. Bonaventure's scoring and rebounding records before he is through. Also returning are John Hayes (12.4), Jim Satalin (11.9) and Bill Kalbaugh (8.9), all of whom figured prominently in last year's success story.

The Bonnies will battle Villanova for top laurels in the East.



Bonnie's 6'11" Bob Lanier

Boston College—Jan. 10, Away

The past four seasons have seen two NIT squads and two NCAA teams. The Eagles should make it five in a row, though they will not be as strong as in the past. Coach Bob Cousy has a solid duo in 6'7" Terry Driscoll (17.8) and Bill Evans, a fine playmaker who sat out half of last season with mononucleosis. Junior Bob Dukiet could develop into one of the top players in the East. After these three however, the talent thins out considerably. Lack of depth will be Cousy's main problem. Up from the frosh are 6'7" Frank Fitzgerald and guard Jim O'Brien.

Creighton—Jan. 13, Away

The Blue Jays record of a year ago was 8-17, the worst in a decade. Creighton will be vastly improved this campaign and should prove a formidable foe. Top man for them is Bob Portman, who averaged 29.5 points a game last season, fifth best in the nation. Portman also pulled down 15.4 rebounds per game but received little help. Veteran Wally Anderzanas, a 6'8" forward, returns after a year's inactivity. He and 6'9" transfer Joe Bergman will provide some solid rebounding strength. Dave Hickley and Mike Caruso (20.4 with the frosh) will direct the backcourt. The Jays could develop into a top midwest independent.

Massachusetts—Jan. 25, Home

The Redmen will field a respectable squad this campaign, led by 6'9" All Yankee Conference center, Pete Gayeska. UMass should challenge Rhode Island and Connecticut for the Yankee crown. Also returning are Ray Ellerton (15.) and Joe DiSarcina, who heads the backcourt. Tops among the sophs is 6'6" Ken Mathias. 6'4" Dennis Chapman, a transfer student, should help with the rebounding. Biggest problem is finding a replacement for Billy Tindall, finest player in UMass history.

DePaul—Jan. 30, Home

The Blue Demons face a demanding schedule that includes the likes of Dayton, Notre Dame, Marquette and Villanova, plus an appearance in the Quaker City Tournament. Despite this formidable list of opponents, DePaul should face better than last season's mediocre 13-12 finish. Chief reason for

More Scoring, Top Sophs for Mullaney

Naturally we hope to approve on last year's 11-14 record. Our squad is very young and inexperienced thus much is expected from the sophomore group.

Larranaga at 6'4" promises to be an outstanding all around player, and Ray Johnson, 6'7", should provide much needed rebounding strength. Our holdovers, Andy Clary, Craig Callen and Gerry McNair all saw considerable action last year.

Overall we should be a better scoring club and better ball handlers, less vulnerable to pressure than we were last year.

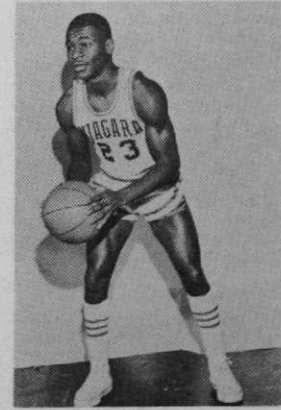
this is soph Joe Meyer, son of the veteran coach, and the freshmen's top all around player. Senior forward Al Zetzsche and junior center Ken Marzynski return to starting berths.

Duquesne—Feb. 5, Home

Last season was a pleasant experience for the Dukes. After three years below the .500 mark, Duquesne finally came up a winner (18-7 and an NIT berth). The reason for optimism this year is seen through last year's freshman squad, which went undefeated. No less than five men scored in double figures. These include Steve McHugh (22.0) and Jarret Durham (21.1). Four starters return from last season's edition. These are Bill Zoph, Moe Barr, 6'9" Gary Major and 6'8" Phil Washington. One or more will be without a starting assignment.

Niagara—Feb. 8, Away

Even with Calvin Murphy, the Purple Eagles will find the going rough. Lost through graduation is 6'8" Manny Leaks who holds most of the school's rebounding records. Reason for optimism is voiced in the acquisition of four junior college transfers, led by 6'6" Joe Adomanis and 6'5" Bill Macready. The rest of the returnees are so-so and the freshmen posted a 3-16 record. Murphy, who averaged 38.2 points per game, cannot make Niagara a winner by himself.



Calvin Murphy, Niagara's All Everything

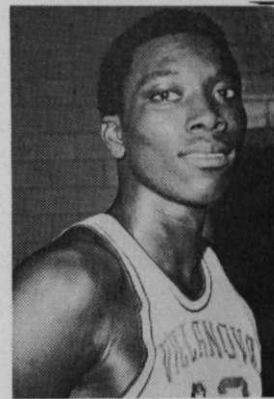
St. Joseph's—Feb. 12, Home

The Hawks won the Philly Big Five title last year. Mike Hauer, a junior, returns at forward. Hauer led the team in scoring (17.8) and rebounding (13.8) last season. Dan Kelly, who averaged 17.7 points per game will be at guard. Another returnee is 6'8" pivotman Ed Leonarczyk. The Friars and Hawks always make it interesting.

Villanova—Feb. 18, Away

The Wildcats return to the glory days of Jones and Washington. Villanova has lost only one player from last season's 19-9 squad. In short, the Wildcats are loaded. Leading the re-

turnees is 6'4" co-captain Johnny Jones, the top scorer and rebounder the past two seasons. Soph Howard Porter is destined for stardom, after pacing the freshmen in scoring with a 30.2 mark. Frank Gillan mans the backcourt. He is the key to the Villanova attack. Sophs Clarence Smith and Hal Watson and seniors Bob Melchionni and George May will fill the other positions. The Wildcat will be in the Nation's Top Ten.



Wildcat Star Forward Johnny Jones

Holy Cross—Feb. 22, Away

Gone is New England's top performer of '68, Keith Hochstein. The Crusaders are a young team and expect to start three sophomores: Bob Kissane, Doug Losso and Jack Adams. Ed Suidit (23.2) returns at the pivot while Gerry Foley will be hard pressed for his starting position. Holy Cross is still looking for a tournament berth. They may have to wait again.

Fairfield—Feb. 26, Home

The Stags will find a .500 record hard to come by with their demanding schedule. Fairfield lost its entire front line through graduation. New coach Jim Lynam faces a rebuilding campaign centered around 6'6" soph Mark Frazer, who averaged 24 points a game for the frosh. Tops among the returnees is Frank Magaletta, who led the Stags in scoring last season.

Seton Hall—March 1, Home

The two top scorers of a year ago, Gerry Murphy and Bill Somerset have graduated. However, the Pirates appear to be their strongest since the days of Nick Workman and Co. Soph Mel Knight is the brightest prospect at Seton Hall since Workman. He will man one of the guard slots. Ken Moss will be at the other guard position. They will form a formidable backcourt combination. The chief weakness is up front where the Pirates suffer annually from lack of a big man. Senior John Suminski must return to his form of sophomore year, when he averaged 18 points a game, if the Setonians are to succeed. At any rate, they should improve on last season's dismal 9-15 record.