

Providence College

DigitalCommons@Providence

Promotional Materials

2010s Seasonal Promotion Materials

Fall 2016

Providence College Department of Theatre, Dance & Film 2016-2017 Season Program

Department of Theatre, Dance & Film

Follow this and additional works at: https://digitalcommons.providence.edu/promos_2010s_pubs



Part of the [Acting Commons](#), [Creative Writing Commons](#), [Dance Commons](#), and the [Film and Media Studies Commons](#)



A Midsummer Night's Dream



@pctdf @pc_tdf /pctdf /pc_tdf

Providence College Smith Center for the Arts, Eaton Street Gate, Providence RI

PROVIDENCE COLLEGE DEPARTMENT OF THEATRE, DANCE & FILM
2016 - 2017 SEASON

Our Town by Thornton Wilder

October 21-23 and 28-30

Fridays, Saturdays 8 pm Sundays 2 pm
Angell Blackfriars Theatre, reserved seats
\$5 all students; \$9 seniors (65+), PC employees; \$13 adult

The Department of Theatre, Dance and Film celebrates the Providence College centennial year with Thornton Wilder's classic play about everyday life in a small New England community. A minimalist theatrical style distinguishes this 1938 Pulitzer Prize winning play which has become a staple of the American theatrical repertoire. The setting, Grover's Corners, NH, is intended to represent all communities in which the inhabitants strive to nurture human relationships, respond to life's unexpected challenges and seek meaning in their world.



above: The Addams Family: A Musical Comedy below: Playhouse Creatures



Speech and Debate by Stephen Karam

January 27-29 February 10-12

Fridays, Saturdays 8 pm Sundays 2 pm
Angell Blackfriars Theatre, reserved seats
\$5 all students; \$10 seniors (65+), PC employees; \$15 adult

Three outspoken students from Salem, Oregon discover a secret about their high school that will change their bond forever. Diwata, Solomon, and Howie combine their talents to produce a one-of-a-kind musical broadcast in their newly formed Speech and Debate squad, to capture everyone's attention- for better or worse.



Creative Writers Festival

March 17 & 18 Friday 7 pm Saturday 7 pm

Locations to be Announced
free admission: ticket required (limited number available)

A festival of original works written, directed, and performed by students in unconventional spaces.



Into the Woods

music and lyrics by Stephen Sondheim, book by James Lapine

April 7-9 and 21-23 Fridays, Saturdays 8 pm Sundays 2 pm
Angell Blackfriars Theatre, reserved seats
\$5 all students; \$10 seniors (65+), PC employees; \$15 adult

Familiar characters including Little Red Riding Hood, Jack and his beanstalk, Rapunzel and Cinderella join a baker and his wife in this musical mash-up of classic storybook tales. Will the baker and his wife rid themselves of the curse placed upon them by an evil witch? Will Cinderella attend the King's Festival? Whose wishes will be granted and at what cost?

Photography credits: Spring Dance Concert: Claire Rigaud '19; all other photography: Gabrielle Marks. still from Jagged Little Pill, directed by Trapper Phillips '18. Design: Coyote Hill

Spring Dance Concert

April 29 & 30

Saturday 8 pm Sunday 2 pm
Angell Blackfriars Theatre, general admission
\$5 all seats

A showcase of student choreography performed by the Providence College Dance Company.

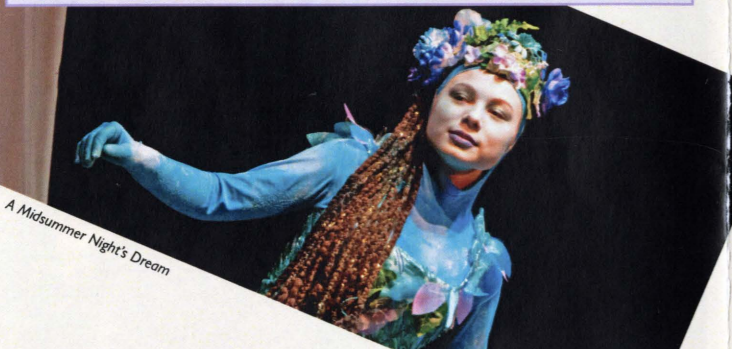


Student Film Festival

May 4

Thursday 7 pm
Angell Blackfriars Theatre, free admission; no ticket required

Short films in various genres, judged by members of Rhode Island's professional film community.



Blackfriars Dance Concert

November 18 & 19

Friday 8 pm Saturday 2 pm
Angell Blackfriars Theatre, general admission
\$5 all students; \$9 seniors (65+), PC employees; \$13 adult

Guest and resident choreographers work with the PC Dance Company to present a performance of group and solo pieces emphasizing technical skill and conceptual variety.

HOW DO WE CHOOSE OUR PRODUCTIONS? The selection process begins when a committee of department faculty and students meet to read plays and start the task of creating an exciting season. While technical and calendar issues are weighed, one important consideration is how we will strengthen student performers and crews in their development as artists.

TICKET ORDERS:

website: www.providence.edu/theatre
Box Office telephone: 401.865.2218
The Box Office is open Monday to Friday 1:30 to 5:00 PM
when classes are in session, starting in early October: cash,
check, PC Cash, or credit card (Visa/MC) accepted. To order
by mail, make checks out to Providence College TDF. Include:
title of production, date, number of seats, price, and a
telephone number where we can contact you.
Mail to: Box Office, Theatre, Dance & Film
Providence College
One Cunningham Square; Providence RI 02918




above: Playhouse Creatures below: A Midsummer Night's Dream

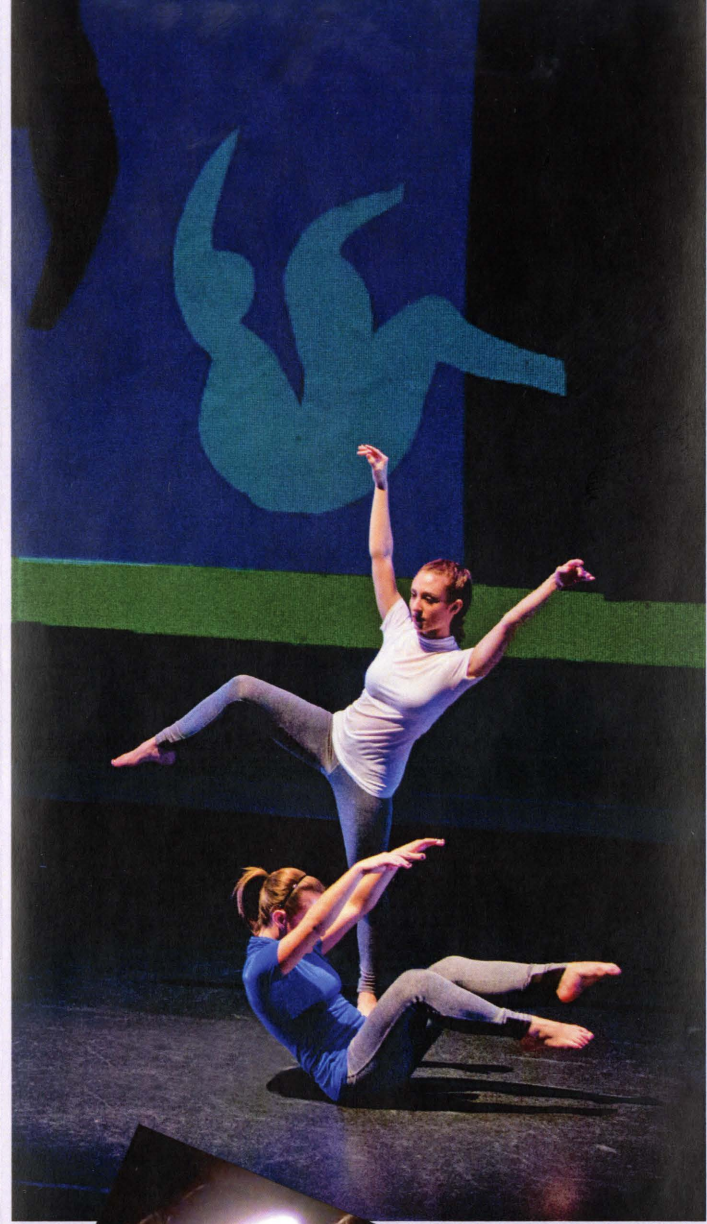
PATRON INFORMATION:

Paid tickets can be held at the Box Office or mailed to you if time allows. You may exchange your tickets for a different performance of the same production by returning your tickets to the Box Office up to 24 hours prior to curtain, subject to seat availability. The Smith Center for the Arts is located on Eaton Street on the Providence College campus, with parking adjacent.

The Box Office, Angell Blackfriars Theatre, and the John Bowab Studio Theatre are all located off the Main Lobby at the front of the building. To be placed on our mailing list, call the Box Office or visit our website: www.providence.edu/theatre.

 Events in the Smith Center are accessible to persons with disabilities. If you are a person with a disability and require an assistive device, service, or other accommodation to participate in these events, please contact the Central Reservations Coordinator at 401.865.2070 Monday to Friday from 8:30 to 4:30 PM well in advance of an event. Program subject to change.

The Addams Family: A Musical Comedy



Blackfriars Dance Concert 2016



still from Jugged Little Pill