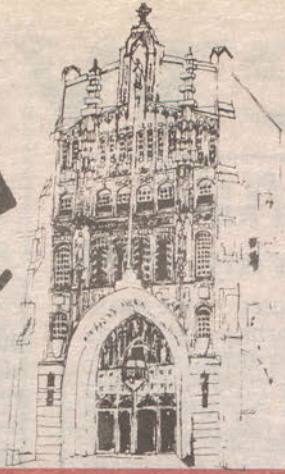




1919

The Owl



Established in 1935



1989

Vol. LIV No. 3

Providence College • Providence, Rhode Island

September 27, 1989

New PC Mini-Mall Set to Open Tuesday

by Colleen Carson and Kerry Anne Ryan

The brand new PC Mini-Mall will make its grand debut this Tuesday amidst the sweet smell of freshly baked cookies, the sheen of brightly colored balloons and bins and bins of candy and nuts.

The mini-mall is scheduled for its Grand Opening from 11:00 a.m. until 3:30 p.m. The mall will then sponsor a Columbus Day party on October 10 with raffles and prizes for the students and faculty.

The mini-mall houses seven shops which will be giving out free samples of their products on the Grand Opening day.

One can choose from Barbara's Pizza and Deli, Sweet Temptation, Dear Hearts (an ice-cream and frozen yogurt vendor), or the Cookie Connection Plus. The other shops available to students are Ray's Florist, Specialty Cleaners, a dry-cleaning service, and the Game Room, which has been enlarged.

All That Jazz, the records and tapes store that was originally included in the mall, was forced to drop out of the project. Unfortunately, the owner of All That Jazz had a heart attack and has been advised by doctors not to continue working. Instead, a proposed PC Friars Sport Shop, "Sports

and More", will take its place. "Sports and More" will possibly feature an athletic clothing line plus all tickets to the Friar basketball games in the Civic Center.

The mini-mall has delayed the opening for two weeks because of problems with inspections and construction. However, most of the shops are now ready to open except for Barbara's Pizza, which has incurred a few plumbing problems, and Dear Hearts, which has had a problem with the lock on their door.

Operating hours are still being decided for most of the stores, but most are expected to open sometime in the early morning and close later on at

night.

The sports bar "Sidelines" is also scheduled for a Grand Opening on Monday, Oct. 2. A raffle will be conducted as well as a T-shirt give away for the first 50 students who attend the opening. Their goal is to attract people for the Monday Night Football game, though Sidelines will be in running order on Friday.

There are still jobs available for those students interested in some spending money. Call the Student Service Office (2211) and leave your name with the secretary. She in turn will give all the names of interested students to the vendors.

Inside Editorials



Students voice their opinions about the future of Mondo Caf. See page 6.

Features



PC students thankful that their summer jobs are over. See page 7.

Sports



Field Hockey ranked #1 in the Northeast. See page 20.

PC Grad Troiano Appointed As Supervisor of Programming and Activities

by Mary M. Zurolo

Peter Troiano, a 1984 PC grad says, "It's great to be back." This time, however, he's on the other side of the desk. Troiano has been appointed to the newly created position of Supervisor of Programming and Activities.

"I am here to work with student clubs and organizations, says Troiano, and the moderators of those clubs and organizations to assist in the area of program planning in both its social and educational aspects."

"Both the administration and the students felt the need for a position like this for a long time, says Troiano. My goal is to try to unify the efforts being made by various offices on campus to try to cut down on duplication of effort and to try to improve existing effort. I will be available if the moderators of clubs need help or advice."

Both because he has only been occupying this position for six days and because it is a newly created position at PC, Troiano feels that he will be building a job description throughout the semester. Troiano expects to be working mainly with BOP and Student Congress to reinforce programs already going on and to improve on existing programs. In addition, Troiano plans to develop a leadership training program. Through such a program student leaders will be able to participate in a formal training program in the spring after elections. Already, Troiano has begun working with the student development office and the residence life office in planning Alcohol Awareness Week which will take place from Oct. 15-20.

"I like being able to assist students in developing their own skills and creating a learning experience outside the

classroom," says Troiano. A native of Bloomfield, Ct, Troiano pursued this interest during his years at PC in his role as Resident Assistant in Raymond Hall and as a member of the chorus. He also participated in the Junior Year in Fribourg Program. Even after graduating from PC as a finance major, Troiano remained interested in working with students. Consequently he decided to stay in higher education and pursue a career in student affairs. Troiano received an MA in College Student Personnel from Bowling Green State University in Ohio in 1986. Previous to this position at PC, Troiano worked as Assistant Director of Student Life at Emerson College in Boston.

Troiano has been elected as Eastern Mass/RI Unit Coordinator for the National Association for Campus Activities. He is also a Red Cross Volunteer



Photo by Armando DeCastro "I am here to work with Student Clubs and Organizations," says Peter Troiano.

and is currently working to provide AIDS education to business staffs in the Boston area. His office is located in the Student Services Office in upstairs Slavin. Troiano encourages club leaders to stop by and introduce themselves in their free time.

Class of '93 and Residence Board Elections To Be Held Tomorrow

by Mary M. Zurolo

It is your opportunity to vote for the Freshman Class executive board and the Residence Board on Thursday, Sept. 28. Elections for the Freshman Class Executive Board will be held all day in downstairs Slavin. The elections for Residence Board will take place in Raymond Cafe during dinner. "Your vote counts," says Paul Nelson, Chairperson of the Elections Committee on Student Congress. Nelson, who is hoping for a 60% turnout at the polls encourages all students to exercise their right to vote.

The Freshman Executive board consists of a President, Vice President, Treasurer, and Secretary as well as five freshman class representatives. The executive board and representatives represent freshmen interests in student legislation, organize social activities and class unity activities such as class t-shirts and serve on Student Congress Boards and Committees.

Residence Board consists of dorm presidents and treasurers. These people organize any activity in the dorms, social or otherwise and also run Colonel's Corner.

PC Receives \$70,000 Humanities Grant to Expand DWC Program

Providence College has received a two-year grant of \$70,000 from the National Endowment for the Humanities (NEH), which has allowed 21 high school teachers from Cumberland, Woonsocket, Blackstone/Millville, MA, North Providence, Pawtucket and Seekonk, MA to join the college's unusual collaborative effort between its own faculty and area high school teachers in the study of Western Civilization and the reform of high school humanities curriculums.

The special section of Providence College's undergraduate Western Civilization Program was created last year for six Lincoln history and English teachers through a two-year NEH "Masterworks" grant of

\$25,000 to Lincoln Junior-Senior High School. This year's grant, which was applied for by Providence College, has allowed another 21 teachers to join this collaborative effort between the college and local high schools, with the hope that the teachers will translate what they learn into a more comprehensive curriculum at their own schools.

High school teachers participating in the NEH grant program are taught by the same Providence College humanities faculty members who conduct the college's undergraduate Western Civilization Program, an interdisciplinary, team-taught course which began in 1971 and is the core of the cur-

continued page 2

Index

News2&3

Editorials ...4,5&6

Features7,8&9

Arts & Enter.10,11&12

Congress.....14&15

Sports17-20

News

Off-Campus Residents Organization and Housing Office Sponsors Off-Campus Living Week

The Off-Campus Residents Organization and the Off-Campus Housing Office cordially invite you to the following free events co-sponsored by Carolyn Ryan, Director of Off-Campus Housing, and A. Paul Cervini, President of the Off-Campus Residents Organization. The events are designed to make off-campus life at Providence College safer, healthier, and more enjoyable for all.

Home security and personal safety will be the topic of discussion on Monday October 2 at 3:00 p.m. in '64 Hall. Lieutenant Gerald Aubin of the Special Projects

Group, Providence Police Department, and Providence Patrolman Desmarais will teach you how to protect yourself, your home, and your car.

Inspector David Lisker, Public Education Officer for the Providence Fire Department, will discuss potential fire hazards and the precautions necessary to guard against fire.

Quick, inexpensive, and nutritious meals that are easy to prepare will be Virginia Hennessey's topic on Tuesday, October 3 at 3:00 p.m. in '64 Hall. Hennessey is the registered dietitian at Providence College.

Cook books will also

be distributed at the meeting by Barbara DeCesare, Manager of Community Relations for Providence Gas Company. In addition, a Providence Gas Representative will answer questions about gas stoves and pilot lights, among other things, given by James H. Reilly, Esq., Student Congress Attorney.

Fred Villari's Studio of Self-Defense will discuss basic self-defense techniques on Thursday October 5 in Court 1 of Peterson Center at 6:00 p.m.

Vampire Crew Collects 201 Pints of Blood for RI Blood Bank

A blood drive sponsored by the Providence College Knights of Columbus Friar Council on Wednesday, September 20, 1989 resulted in the donation of 201 pints of blood by PC students, along with several faculty and staff, to the Rhode Island Blood Center. The Knights of Columbus Friar Council, a student organization, topped its goal of 200 pints.

Blood drives are conducted by the college's Knights of Columbus twice each semester and attract close to 200 donors each time, for a total of approximately 800 pints of blood donated yearly. For the past four years, Providence College blood drives have had the highest student participation rate of all blood drives held by colleges in the state, a distinction which has

been marked each year by an award presentation to the PC Friar Council by the Rhode Island Blood Center.

For its achievements during the 1987-88 school year, the PC Knights of Columbus Friar Council was honored by the state's Knights of Columbus organization for collecting one-half of all of the blood donated through K of C blood drives held throughout the state that year.

Also during the 1987-88 school year, one PC Knight of Columbus blood drive garnered 248 pints, a record for a one-day college blood drive which has yet to be broken.

As in past PC drives, this year's blood donors were treated to pizza and soda donated by Domino's Pizza and Coca-Cola.

Dr. Fleming Speaks About "Being in the Minority"

by Liz Grant

Dr. Jacqueline Fleming, prominent psychologist and author of "Blacks in College," came to Providence College to deliver a lecture "On Being in the Minority." Both students and faculty attended the lecture which took place in Moore Hall on Monday night, September 25. Dr. Fleming discussed her book and addressed the social, psychological, and academic problems minorities face nationwide.

Dr. Fleming grew up in Providence, received a BA degree from Barnard College, and a Ph.D. from Harvard University. She is currently a psychological consultant in New York City and a professor of psychology at Barnard. Her specialization in Racism and Motivational Psychology prompted her inquiry into the relations and performance of minority students in college, which she calls "a microcosm of society itself." Dr. Fleming

continued page 3

continued from page 1

riculum at Providence College.

"The program is designed to both open the college's faculty and resources to the secondary school community in an ongoing effort to reform the high school curriculum," according to Dr. Rodney Delasanta, director of PC's Liberal Arts Honors Program and coordinator of the NEH grants on the college's behalf, "and to nudge high school teachers of the humanities into an enhanced awareness of the inter-relatedness of academic disciplines, so that they might be inspired to develop their own interdisciplinary curriculum in the high schools based on the PC model.

"What we tried to impress upon the Lincoln group in the first year of the grant," said Delasanta, "was the need for history teachers to think literally, for literature teachers to think historically, and for both to be well-served by the fine arts, philosophy, and religious thought. No single academic discipline can go it alone in

understanding what any epoch really meant."

At Lincoln Junior-Senior High School, a new humanities curriculum, inspired by the PC model and created by the Lincoln teachers participating in the first NEH grant (which still has a year to run), has recently been introduced.

According to Ralph Canevali, a program officer for the National Endowment for the Humanities, the new \$70,000 grant, termed a "collaborative project" by the NEH was awarded based on the success of the original grant program, which was one of the first "Masterworks" grants to be awarded by the NEH. "We strongly support this program because its actual intellectual content is focused on the great texts of Western Civilization, which we feel should be emphasized on the high school level," said Canevali. "The NEH is happy to fund projects of this type because they can be used to break down the barriers between those teaching on the secondary school and col-

lege levels. We are appreciative of the efforts Providence College and its faculty have made to build a genuine intellectual community between Rhode Island's secondary school teachers and the college's faculty."

Lincoln grant participants Paul Dalpe and Joyce Conti, who co-direct the NEH grants on the high school's behalf, believe that NEH's heavy support of the second grant was also occasioned by the enthusiastic response of the six Lincoln teachers to the first grant. Based on this enthusiasm, the co-directors believe that most teachers would respond favorably to post-graduate academic programs which would provide the basis for curriculum reforms in their own schools. In fact, most of the 21 teachers new to the program had heard of the success of last year's program involving Lincoln Junior-Senior High, and asked to be included in this year's program.

PC Music Ministry

Welcomes New Members

Acoustic Guitarists
Electric Bassists
Pianists
Vocalists
Organists

Rehearsals: Thursdays 6-7:30 p.m.
in Aquinas Chapel
Contact the Chaplain's Office at
865-2216 or Bill Barrett at 865-3278.

Lucia's Restaurant

686 Admiral Street Providence

serving lunch and traditional
Italian & Seafood dinners

also serving Breakfast Sat-Sun. 10-2
Open 7 a.m. - 9 p.m. Mon - Sat.

Good Food
at
Student Prices

Political Science Department Announces Government Internship Program

The Rhode Island State Government Internship Program will begin its 24th year in January of 1990. The program offers opportunities for experience in and research about the governmental process of the state of Rhode Island during the second semester of each academic year.

Juniors and seniors attending accredited colleges and universities in Rhode Island and nearby Massachusetts are eligible to apply. A student need not be a resident of Rhode Island. All majors are eligible, as long as one has a grade point average of 2.5 or better. In recent years, Providence College students majoring in accounting, art, biology, economics, english, finance, political science, and other concentrations have successfully completed internships.

Students, with the assistance of the full-time program staff, are placed in field positions throughout state government. After consultation with sponsors, students set up an 8 to 10 hour per

week work schedule. The academic component of the program includes weekly two hour lecture/discussions held in the chambers of the House of Representatives. Reading assignments accompany each of these sessions. Speakers include faculty from participating colleges and practitioners from state government and politics. There are mid-term and final examinations, as well as a research paper. Upon successful completion of the program, students receive three credits towards graduation; traditional letter grades are assigned.

The academic advisor for Providence College is Professor Mark Hyde of the Department of Political Science. He will be holding an informational meeting for juniors and seniors in Room 113, Slavin Center, Monday, October 2 at 4:00 p.m. Professor Hyde and former interns will describe the application procedure and answer any questions about the program.

City of Providence Announces Regulations for Trash Pick-up

Off-Campus students should be aware of the following information regarding trash pick-up and gas service provided by Carolyn Ryan of the Off-Campus Housing Office.

Trash will be collected on Fridays for those residents of Oakland Avenue, Malborn Street, Camden Avenue and Douglas Avenue from Camden Avenue intersection to Chad Brown St. Trash will be picked up on Tuesdays for those residents of Eaton Street and the remainder of the area.

The City of Providence is requesting that all residents comply with several regulations regarding rubbish collections. These regulations do not take recycling into consideration. Recycling coordinators will be contacting the college to discuss these regulations.

These regulations are:

Put your trash out after dark on the night before pickup and bring in the empty containers as soon as possible.

Put your trash in covered containers and tie up bundles. Trash bags are not replacements for trash containers. They can break apart or be torn open by animals.

Newspapers should be tied securely or placed in plastic bags and/or plastic or metal containers.

Wood, branches, or brush must be cut into lengths no longer than 5 feet and tied in neat piles that can be handled by one person; smaller trim-

mings should be placed in a plastic bag or in a rubbish container.

Leaves must be placed in bags or plastic/metal containers.

Broken glass or sharp objects must be placed in plastic or metal containers.

Small furniture (chairs, tables, etc) must be neatly placed on curbside.

Heavy items are included as part of your regularly scheduled weekly collection.

Large appliances (stoves, refrigerator, washers, dryers, couches etc.) must be placed on curbside. It is requested that you place one or two of these items per week.

Plaster, dirt, and similar debris must be placed in either a sturdy plastic or metal container provided they do not weigh over 75 lbs. or can be lifted by one individual.

All toxic materials will not be picked up. Please call 1-800-253-2674 for all disposal locations.

Landlords must provide trash containers for any structure four units or more.

Keep your dog at home or on a leash, especially the night before and trash day. Dogs knock over cans, rip open bags and generally make an awful mess.

Clean up trash that spills on the street or sidewalk. It is your responsibility.

If you do not know your regular pickup day for your street or have any questions regarding trash collections.

Please call the department of public works at 467-7950.

The Providence Gas Company provides instructions for those students who want to have their gas service turned on.

If you have had a gas account in the past and still have an overdue bill, you must come in to one of our offices. The old bill must be paid in full before you can open another account.

Bring with you a picture ID such as a driver's license or your college ID. Also bring a pay stub from your current job or a one hundred dollar deposit and a list of your roommate's names, home addresses, and telephone numbers.

The Providence Gas Offices is located at 100 Weybosset St. in Providence.

If the gas is off and you do not owe a past bill, please call and we will take the information over the telephone. You will then have to provide us with proof of income or a deposit—one hundred dollars for a heating account or forty dollars for a water heating account.

If the gas is already on the procedure is the same as if the gas were off except that an application will be sent to you which you must return with proof of income or a deposit.

If you have any questions contact The Providence Gas Company which is open Monday to Friday from a.m. to 7 p.m. at 831-8800. They're not just a lot of hot air.

continued from page 2

claimed that problems within minority groups can be "early warning signs" of larger problems existing in society.

In the lecture, Dr. Fleming noted that blacks have a %20 higher drop out rate in college than whites. She continued to cite statistics she gathered from her seven years of extensive research prior to her book's publication. These results showed that black students are far more successful in a predominantly black school, than a white one. This success proved true in virtually all aspects of college life.

The reasons for these findings, according to Dr. Fleming, is that minorities lack many factors crucial to the growth and de-

velopment of a student. In predominantly white schools, the black students proved to have less satisfaction, motivation, friendships, and support systems.

Dr. Fleming provided problem solving techniques schools could utilize in order to find solutions. She suggested programs schools could implement to enhance cultural diversity. Dr. Fleming stressed that "people are more important than things." Schools can not just survive with new material things and facilities. Instead, Dr. Fleming urged schools to "not ignore cultural differences, but celebrate them" and that "multidimensional thinking equals effective thinking."

Lynn Ventura Named Student Loan Manager

Lynn Ventura of Worcester, MA has been named the new Student Loan Manager at Providence College and will be responsible for administering all phases of the federally-funded Perkins Loan Program.

Under this program, approximately 500 PC students receive a total of about \$5.5 million in federally-funded loans.

Ms. Ventura holds a bachelor's degree in psychology from Worcester State College, and most recently was student loan officer at Clark University in Worcester. Prior to that position, she was employed by Consumers Bank BNE in Holden, MA.

Ms. Ventura is the daughter of Beverly Jackson of Worcester.


#1 ON THE
BALLOT

VOTE FOR
VINNIE COLONNA
CLASS OF '93
VICE-PRESIDENT

GIVE CERTIFICATE

FREY FLORIST

Show your college
I.D.
and receive a



RICHARD

Free Plant

50 Radcliffe Ave. Providence

Editorial

Who's At Fault?

If the problems of students who reside off-campus could only deal with trivial matters such as hot water, the payment of utilities bills, working fuses and whether or not one gets along with their roommates, the situations which PC students find themselves involved in would be so much more non-stressful. However, every PC student, Elmhurst neighbor and any person residing in the radius of the *Providence Journal - Bulletin* and the local news networks knows for a fact that the parallel of "Easy Street" and Eaton Street is virtually non-existent. The problems which plague the off-campus student residents include various complaints from the neighbors, absent landlords, break-ins and robberies, sexual assaults and, until recently, serious accidents which involve PC students as victims.

As the infamous idiom states, "trouble comes in threes," and so rings true for the incidents which have occurred in the past two weeks. For, within this short time, three students who reside off-campus have been involved in extremely serious accidents. Two of these unfortunate incidents took place on the neighborhood streets while the third one occurred in the student's apartment. Unfortunately, all of these students are still listed in rather serious condition at local hospitals and it is improbable that any of them will be returning for the remainder of the semester or possibly the entire school year.

Still yet another unfortunate fact regarding one of these accidents involves the issue of landlord negligence. It seems that for the amount of rent students pay each month to live in these apartments, some of which should be condemned, the landlords responsible should ensure that all the needed repairs and improvements are completed upon the requests of the student occupants or by the judgement of the landlord himself. Electrical fixtures and appliances should be rendered safe for usage, as well as, stairways, windows and exterior porches. In this way, the living conditions of the students would be significantly upgraded thus guaranteeing the safetyhood of the apartment's occupants. Also, lawsuits involving charges of negligence by the landlord could be avoided as well.

As for the other accidents mentioned above, a student's own exercise of caution and judgement should be stressed to the limits. As young adults, PC students should understand the potential danger of motorized vehicles and the responsibility one must exercise which accompanies this. Whether or not alcohol was involved in these accidents remains unclear at the time that this article was written, but its affect on operators of motorized vehicles should not be overlooked. PC students, as well as anyone else, should take this advice into consideration whenever one is faced with operating a vehicle or riding as a passenger in one.

The entire Editorial Board and Staff of *The Cowl* wishes to extend their most sincere wishes for a tremendously quick and healthy recovery to those three students who remain in the hospital as a result of the accidents mentioned above.

by DAN CONTOIS



Co-ed Dorms: A Possibility at PC ???

Betsy tried so hard to run, but her mother's firm grasp kept her from going on ahead. All that Betsy could see was that immense sandbox glowing in the bright August sun as she and her mother took on a Saturday afternoon road trip to the local playground. As soon as she got to the gate she dashed over and jumped into a pile of sand. It wasn't sand to Betsy, though. To her it was bricks for the mansion she would create; it was stone that would give form to the castle in her imagination. She knew that, together with Billy and Scotty from down the street, they could create a landscape of elegance of which every kid at the playground would be jealous.

"But Elizabeth," said a stern voice overhead, "Scott and William are playing in the sandbox on the other side of the park, this is your sandbox." "Why don't you just ask Sally and Sheila to play with you?" "They would make nice friends for you."

"But Sir," replied an aggravated Betsy, "Billy, Scotty, and I have been planning this all week at school. Sally and Sheila are only good at making mudpies."

"Well, Elizabeth, those are the rules. Just stay here in the girls' sandbox, you'll get used to it. You may even have fun."

Yeah, Betsy might have

fun, but this silly playground scenario reflects the absurdity and ignorance evident in the existence of only single-sex dorms here at Providence College.

The present housing arrangements, at least for undergrads, portray a blatant disregard for the possibility of platonic relationships on campus.

Maryellen Cronin

Yes, this is a Catholic institution where our personal morality and set of values are not completely "trusted," but rather are "guided" by such things as parietals and singles sex living conditions. Co-ed dorms would not add to the promiscuity of PC students. Instead, I believe this condition would promote respect between the sexes, ignorance of which is often displayed when the groups are segregated. The school does not necessarily favor one gender over the other, but it does practice segregation, which can lead to sexism, not to mention general introvertedness, disrespect, and immaturity.

At Providence College,

platonic relationships are not non-existent, but they are extremely rare compared to those evident at other institutions of higher learning. Single-sex dorms greatly hinder one's ability to casually befriend a member of the opposite sex in a strictly platonic nature. One generally befriends the people that one lives with, those who live on one's floor, or simply, the people who live in the dormitory.

Think about it, the only places that members of each sex generally interact are in the classroom, at a party, or in a bar. Realizing that the bonds of friendship are not the primary concern at a social outing, must we resort to classroom acquaintances as our only source of platonic friendships?

Co-ed dormitories would certainly create a unity and relaxed atmosphere at the college. Even after seeing the movie *When Harry Met Sally*, I believe that platonic relationships are a very real and enriching part of life that could only enhance one's experiences at Providence College.

By the way, this editorial should not be perceived as promoting ideas that oppose the Catholic Church, as numerous surrounding Catholic colleges including: BC, Holy Cross, Stonehill, Villanova, and Georgetown, all can attest to having at least one co-ed dormitory.

The Cowl

Established 1935
USPS 136-260

- Editor-in-Chief Kerry Anne Ryan '90
- Managing Editor Edward Moore '90
- Editorial Editor Kimberly Rainis '90
- Copy Editor Molly Norko '90
- News Editor Mary M. Zurolo '90
- Assistant News Editor Colleen Carson '92
- Assistant Editorial Editor Brian Kennedy '90
- Arts & Entertainment Editor Greg Wood '90
- Assistant Arts & Ent. Editor Lisa Cyr '91
- Features Editor Lauren A. Connelly '91
- Assistant Features Editor Meg Neumann '90
- Sports Editor Renee Duff '90
- Assistant Sports Editor Scott Pianowski '91
- Photography Editor Armando DeCastro '90
- Graphics Editor Dan Contois '91
- Co-Advertising Manager Janice Ruane '90
- Co-Advertising Manager Lynne Griffin '90
- Business Manager Tricia O'Connor '90
- Circulation Manager John Friel '90
- Assistant Circulation Mgr. Michael Coen '91
- Congress Correspondent Caroline Fargeorge '90
- Congress Correspondent Daniel Walsh '91
- Production Manager Lisa Murray '90
- Advisor Rev. Lawrence J. Donohoo, O.P.

Subscription Rate \$8.00 per year by mail- Student subscription included in Tuition fee. Published each week of school during the academic year and one summer edition by Providence College, River Ave and Eaton Street, Providence R.I. 02918. Second Class Postage paid at Providence, R.I. Slavin Center. P.O. Box 2981 865-2214 "Postmaster: Send Address changes to the Cowl, as above." The opinions expressed herein do not necessarily represent the opinions of the administration or the student body of Providence College.

Commentary

Distance Doesn't Mean "Dissed"

By John Santry

We've all witnessed the grave face, heard the sporadic sighs and observed the tranquil daydreams of the unique PC student in love...yes love! However, this unique student separates himself from the society where "normal" relationships exist. He is a proud participant of the dreaded "long-distance relationship." When one hears the words, "long-distance relationship" his first reaction is usually surrounded by astute confidence and unshaken assurance, not that this relationship will work out mind you, but rather that it will plummet to the depths of human suffering. I think societal pessemism, collegiate disapproval, and individual negativity have put a premature stigma on long-distance relationships. They can work, provided current misperceptions and beliefs are dispelled.

If you plant a seed and do not give it proper nourishment or provide an appropriate environment for it to grow, then it will never foster any resemblance of life. This sounds obvious. However, the same holds true for long-distance relationships in college. College is an environment for personal and spiritual development. It spurs intellectual, as well as social growth. I'm sad to say that if you want to experience all this growth, according to popular belief, you will have to sacrifice a long-distance relationship. College, by its very nature, has deemed it unretainable and unthinkable. This seed, this long-distance relationship, cannot grow in a collegiate setting, so higher education tells us. I think it can grow. It is up to the individual

to be persistent, to pursue, to find that niche in college life where he can maintain a relationship with someone far away. This student, this "romantic," as it were, must pinpoint his own beliefs and desires, and he must be strong enough emotionally to endure the onslaught of criticism handed down by the plethora of 1980's "unromantics."

After this storm is weathered, the participants and proponents of long-distance relationships must undergo the individual gamut of experience. We've all observed these people. We've watched their steadfast march to their Friar box, and viewed their emotional see-saw as they gingerly peer through the window at a mail-filled or empty box. We've all awaited their facial expressions as they dissected every line of their loved one's letter. We've all, at one time or another, wondered what they were thinking when they ended that phone call, costing oh so much money! I feel that we all have a quiet, understood respect for those brave romantic few, or at least we should. They all embody the ideals which the modern college student is lacking. In this 1980's, "me" orientated, get ahead, fast-paced society, I believe the average college student is out of touch with such concepts as true devotion, dedication, responsibility, honesty, discipline, compassion, understanding and patience. The list can go on and on.

The bottom line is that it takes an extraordinary individual to make a long-distance relationship work. Let's face it! It takes a special person to even attempt to maintain a re-

lationship in the face of current beliefs. There is hope for these unique few. This hope manifests itself in the heart of the individual, not in the mind of society. Even if society completely changes its prospectives an long-distance relationships, the hope, the inspiration and the effort which started the relationship will be oblivious to this change. The true long-distance relationship proceeds and endures while adjusting to the changes, the oh so many changes around it. This is not to say that all long-distance relationships work out, but rather, it is a recognition of their potential for success. If there is one iota of potential, the true believer should pursue although many outside forces try to hold him back. Hence, I do not buy the excuse that distance is the cause of a relationship going sour, or that one member "dissed" the other member, as it were.

So, the next time one of you brave few out there on the PC campus hears the melodies of Richard Marx's "Right Here Waiting," Journey's "Faithfully," or any other heart-touching song, don't feel suppressed by the suffocating negativity of society. In retrospect, remember your loved one, not the distance between you. Remember the potential for success, not the morbid criticism. Remember your own experiences and not the miserable experiences of others. Remember, if nothing else, this quote by a great man, "To live is to change, to be perfect is to have changed often." No matter what twist and turn your relationship takes, don't give into society's mindset. Please, don't give up! Distance can't affect the things you hold closest to your heart.

The Fall of A Nation

By Chris Superczynski

Leaders of men once constructed a magnificent city which, made from the finest materials, stood both strong and true. In their wisdom, they created a great wall to protect the city from attack, so that the vision of its founders might never perish from the land. As the city grew in both size and worth, its leaders deemed it necessary to use more and more of their resources to fortify the city's defenses. As a result, they found themselves each year possessing fewer and fewer resources with which to improve the city itself. By stubbornly persisting in their foolish ways, they neglected to maintain the very foundation of their city. In time, the foundation crumpled and the city fell; not to a scrouge from beyond its walls, but to one from within.

If you see in this parallel between that city and our nation today, you are not alone. The more I hear of the frivolity of national spending, the greater my anger, and my fear, become. In a nation of so many millions, are there no wise men and women who can lead us

back from the verge of self-destruction? Are there no great leaders who can re-establish our priorities and once again place the "good of the people" first? In a land of wealth, there is no reason for men to live in want of food, shelter, clothing, or medical attention. In a land of opportunity, there can be no excuse for the growing population of illiterate and poorly-educated citizens. In a land of equality, there can be no justification for the fact that the teachers of our youth, the protectors of our well-being, and the helpers of our unfortunate should be so poorly paid and so little respected.

The foundation of our country is built upon the strength, diversity, and the imagination of its people, but today, the foundation is crumbling. We spend foolishly on weapons we must never use instead of spending wisely on our only hope, the people. Such stupidity can never and must never be tolerated! We must put an end to outrageous defense spending. The money is desperately needed elsewhere. After all, what good are weapons if there is no country to

defend?

Money cut from defense expenditures must be put to use quickly. We must improve our educational system so that it can produce from all peoples a well-trained and self-sufficient citizenry. We must allocate funds for the elderly, the poor, the addicted, and those stricken with AIDS. We must provide for the care of the homeless and the unfortunate. We must increase funding to law enforcement agencies to help in their war against crime and drugs. We must provide jobs for the jobless, increase wages for those who serve the community, and work to purify our environment. Most of all, we must renew the spirit of hope, vigor, and discovery upon which our nation was founded.

The time to act is now. The power is in the people. We are the ones who vote. We are the ones to choose. The priorities which have been misplaced, we must, at last, set straight. We must turn from our walls, and look to our foundations, that our substance may hold firm, and our city never fall.

Letters to the Editor

Callus Media

Dear Editor:

Tropical storm Hugo glided with all the subtlety of a steamroller onto the shores of South Carolina last week. Down South go the journalists. Let's film a few shots of the devastation and homelessness; a few generic scenes - click, click; and let's not forget the scene with the hungry child in it. Some Sam Kinison: "Don't feed him yet!" Except before then it was called hurricane Hugo and it did just as much damage to several islands in the Caribbean under the aegis of the United States. That region received some news coverage and then the storm hit Charleston and ... oh, but let's forget about the Caribbean. South Carolina is much closer and more interesting.

I happen to know a couple of people at Providence College from Puerto Rico, and they are both fine individuals. What's the difference? I wonder. What does it take to make a human being that Channels 6, 10 and 12 will pay attention to? Two eyes, a nose, a mouth, two each in the arms and legs department... Well, let's look around; everyone's got 'em.

Hawaii was not a state when Pearl Harbor was bombed. Why all the fuss then? Oh, there's that small matter about a naval base. That makes it much more interesting. Everyone knows that Pearl Harbor was practically arranged. Whether or not it was a conscious effort on the part of the United States is irrelevant. Preconceived notions floated around like dust motes on the wind. The same held true last week.

Sincerely,
William J. Good
Class of 1990

All Staged Out

Dear Editor:

My heart raced as I approached the Peterson Recreation Center last Friday. I had on all of my fineries, and my hair was combed to perfection. I couldn't believe it, 3000 college students in one building. The possibilities were endless. My first impression of the gym turned dancehall was that of amazement and wonder. How did they ever fit the dance floor through the door? The people on this floor, packed elbow to elbow, were showing off their best moves. I realize now that the closeness of all these people had a certain symbolism to it. The feeling of being a part of this mass of enjoyment was overwhelming. Any problems or worries, including the possibility of a Civ quiz, were forgotten due to the emotion and electricity in Peterson that night. This high can be attributed to the band, who rocked for hours and kept the people on the dance floor the entire night. Despite the heat and the sour odor of the gym itself, the crowd seemed to get larger as the night progressed. During a brief moment in between songs, I glanced at my watch. My mood changed from joy to disappointment when I realized that it was 12:55, and what I thought was a temporary break in between songs was actually the finale to a great night.

Sincerely,
Dan Marinis
Class of 1993

Introspect

Hurricane Hugo annihilates Charleston, Cranston

US- Soviet Arms Agreement slated for 1990

East German Exodus

Airplane disasters at LaGuardia Airport; Niger

Columbian drug upheaval

Saturday Night Live turns 15

Barney Frank "switch hitter" controversy

Oil Can Boyd achieves 1,000 strike-outs

Vests are in... acid washed jeans are out

Last Resort - 190 Daze Countdown

Off-campus safety

\$1.00 Drafts

Mini-Mall Mania

PC's Roving Photographer

The Mini-Mall in Slavin Center is scheduled to open soon. It will offer the students a variety of food franchises, jobs, small shops, and a new place in which to spend time. However, due to these new food franchises, Alumni Cafe (Mondo) may be closed. Would you be opposed to this?



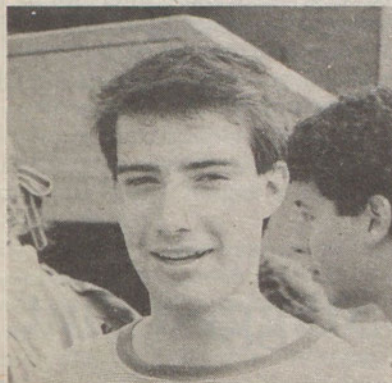
Chris Boyle '90: If Mondo was closed, I would have no place to hang out while I'm skipping my classes.



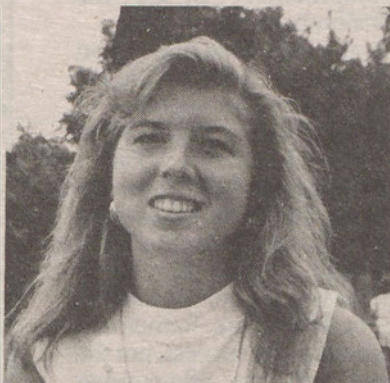
Karen Gagnon '90: I think it's a terrible idea to close Mondo. If this happens, there will not be an inexpensive place to eat on campus.



Meredith Goddard '90: I don't think Mondo should be closed because Mary (the cashier) would lose her job.



Jerry Hemmenway '90: I'm kinda indifferent.



Allison Howe '90: Yes. I would be opposed to this because Mondo is a great place to hang out. It offers a variety of food which is inexpensive whereas the mall may not be.



Armand Milanesi '91: I definitely want Mondo to remain open. The food in the new Mall may be too expensive, and I'll run out of money.



Andy Kraabel '91: I agree with Armand.

Column Policy

The Cowl welcomes columns written by our readers. Those wishing to write a column must submit their name, Friar Box number and their phone number along with their article and submit it to the Editorial Editor. Although not mandatory, columnists are requested to speak with the Editorial Editors regarding the subject of the column prior to submission. The Cowl reserves the right to edit the column for taste, style, content and space. Columns reflect the viewpoint of the author and do not necessarily represent the views and opinions of the Editorial Board or Providence College.

RA Rebuttal To PC "Summercamp"

By Lisa LeBlanc

It saddens me to know that even one student at Providence College has a negative attitude about residence life. Being a senior having lived on campus for four years, and being a second year Resident Assistant, I am even more disturbed to hear that after three weeks here at school, any student feels as though he or she were on a "leash" and being deprived of opportunities of adulthood.

The student to whom I am referring is Kristen Paduch. I know she feels this way because of her article in The Cowl on September 20. Miss Paduch's leash is full of notches. Some of these notches are:

parietals is diminishing the quality of the students here at PC, the rules and regulations are "neglecting" the students, and the fact that Resident Assistants are babysitters.

Parietals is one of those rules and regulations that in fact, is in existence for the precise reason of protecting the students. It follows Providence College's commitment to the Judeo-Christian ethic, and from the Residence Office's belief that unregulated visitation reduces a student's privacy.

Rules and regulations are part of community standards, period. A community cannot exist without order, and rules

and regulations are the basis of that order. Providence College is a community, thus, lack of rules and regulations would only result in chaos.

The portion of Miss Paduch article that disturbed me the most was her view of the Resident Assistant. I can only assume that she does not fully understand the role of an R.A.. In reality, a Resident Assistant works with students to create and maintain an atmosphere which fosters meaningful educational opportunities, as well as valuable personal growth experiences. It is a position to which 1 and 62 other students have given a serious time and emotional

commitment that goes beyond time requirements. A resident Assistant wears many hats. We are: Resource and referral agents, if we can't help you, we know who can; Administrators, calling the proper people to fix your light, making sure the halls are clean; and we take the lead in Community Building, planning activities for the floor and/or residence hall; and yes, being a disciplinarian.

Again, I can only assume Miss Paduch feels as though R.A.'s are babysitters via our disciplinarian role. However, I would like to point out that if everyone made a mature choice to abide by the rules, there

would be no need for us to be disciplinarians.

I hope I have cleared up Miss Paduch's misconceptions about residence life at PC. Furthermore, if she or anyone else does not understand anything about residence life, I would encourage him or her to talk to their RA (as another aspect of our job is to encourage and assist students in understanding and abiding by the rules and regulations of the college and the Residence Life Office). We are here to be your friend, we are here to make life at PC more enjoyable, and we are here to help students grow and mature into adulthood. College is much more than summer camp.

Features

Was It Really Summer Vacation?

By Lauren Connelly

The warm, balmy breezes of summer turn cool and brisk, the once-flourishing landscape gradually fades to the golden hues of autumn, and those beloved cotton shorts are inevitably replaced by warm, woolly sweaters; slowly, but unavoidably, summer vacation dwindles down to a distant memory. Looking back, we tend to glorify special moments with friends, the unparalleled beauty of that last sunset on the ocean, the glow of the blazing sun on our skin and...wait—what about that excellent first-rate job? Miraculously, the yearning for summer suddenly lessens and we thank god we're back at school.

For those of you who were fortunate enough to find a high-paying, respectable challenge of a job or internship, congratulations—you're one of a select few. Then there's the rest of us. This didn't happen due to a lack of trying, patience, ability, or self-respect. It's more like a case of good ol' St. Augustine's Elect vs. the Damned: some of us were meant to spend the summer in an air-conditioned hematology lab, labeling blood smears for fifteen bucks an hour; others, however, were destined to kill mosquitoes. Sure, that's fair—it's the way of the world.

Since the days of old, college students have been known to partake of summer employment that is, pardon the tone of arrogance, far beneath their intelligence quota and far above

their tolerance for pain. Then and now, the basic premise is that students subject themselves to laborious, backbreaking kinds of work not because they're really masochists, but to affirm their dedication to school by earning enough cash to finance it. And undeniably, some of the most heinous summer jobs—pouring asphalt at 6:00 a.m., roofing houses under a fiery summer sun (99% humidity, of course), or acquiring a case of far-sightedness after "re-organizing" that chaotic, archaic filing system that hasn't been updated since 1969—do pay students relatively well. The pending question is, is it *really* worth the sun stroke, the physical exhaustion, irreversible eye damage, and going to bed at 9:00 p.m. just so you can function before the rest of humanity (and most animals) would even consider waking?

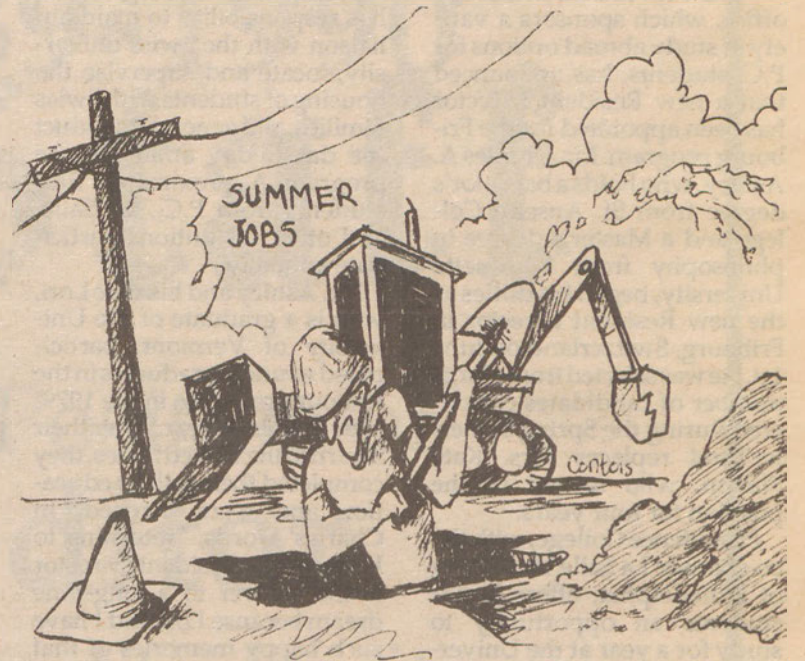
Incredibly, most students concede that despite the hellish nature of their jobs, in one sense or another the drudgery was worth it. Whether it was essential in paying tuition and returning to school, providing them with extra spending money, or saving them from the insanity resulting from sheer boredom, it was worth it. Most importantly, however, is realizing the hidden value of such onerous work. These kinds of jobs humble those who are convinced they can conquer the world with a textbook; they build strong character, and allow us to confront our true ambitions and discover the

Some of us were destined to kill mosquitoes this summer...

depth of our convictions. Halfway through the summer we find ourselves fostering a strong sense of responsibility and a desire to persevere, even in the most dire circumstances. And these jobs don't have to be just physically taxing in order to be enlightening—I may have learned more about myself this summer from one little boy with autism than he learned about reading from me.

The bottom line is that the value of hard work extends beyond the toning of muscles or sharpening the wit. It somehow becomes inspirational in that we realize halfway through the summer that although we may not love our jobs, we know they are only temporary, and we find an inner strength to continue on. It is that strength which makes us aware of our priorities, our ambitions, and our deference to ourselves, our education, and our futures.

Besides, going to school is much more fun than working...



Remedy Those Pizza Thighs

By Megan Grennan

If you haven't noticed the swarms of people clad in spandex and tee shirts marching toward Peterson every afternoon, you don't go to P.C. The fitness craze has hit this campus hard, and many students and faculty have chosen the provided aerobics classes as a means of getting in shape. On the first day, over 300 energetic men and women submitted themselves to the hour-long test of endurance. Traditionally, Monday is the most well-attended day. The courts are filled with guilty beer bellies and pizza thighs after a busy week-end. However, attendance

dwindles only slightly as the week goes on, indicating a real commitment to good health and fitness.

The class is taught by Lynn Hagen, a certified instructor and member of the class of 1992. The certification process requires an intense day of aerobic workshops and seminars, and the successful completion of a written exam. Lynn has taught various classes over the summer in the Boston area and is knowledgeable in the area of muscles and proper exercise techniques. She is careful to warn her students of potential

(continued on page 8)

Why Study Abroad?

STUDY ABROAD INFORMATION SESSION

2:00 P. M. - OCTOBER 4, 1989

SLAVIN CENTER/ '64 HALL

DURING THIS ACADEMIC YEAR PROVIDENCE COLLEGE STUDENTS ARE STUDYING IN SWITZERLAND, ENGLAND, IRELAND, ITALY, AUSTRIA, FRANCE, AND SPAIN.

CONSIDER THE EDUCATIONAL ADVANTAGES OF STUDYING ABROAD YOURSELF!

YOU MAY FIND THAT PARTICIPATING IN A FOREIGN STUDY PROGRAM WILL ENHANCE YOUR CAREER PROSPECTS, ENABLE YOU TO GAIN A NEW UNDERSTANDING OF YOURSELF AND THE WORLD, AND PROVIDE AN UNPARALLELED OPPORTUNITY TO LEARN A LANGUAGE.

THIS INFORMATION SESSION WILL DISCUSS IN DETAIL THE VARIOUS OPPORTUNITIES AVAILABLE TO PROVIDENCE COLLEGE STUDENTS.

PLAN NOW TO ATTEND THIS MEETING AND LEARN ABOUT WHAT YOU NEED TO DO IF YOU WOULD LIKE TO SPEND NEXT YEAR ABROAD IN EUROPE OR JAPAN.

STUDENTS FROM ALL MAJORS ARE WELCOME TO ATTEND. THE SESSION WILL CONSIST OF A DESCRIPTION OF VARIOUS STUDY ABROAD OPTIONS, PROCEDURES FOR APPLYING, CRITERIA FOR ELIGIBILITY, AND COSTS. A SLIDE SHOW DEVELOPED BY FRIBOURG STUDENTS WILL BE PRESENTED AND SENIORS WHO SPENT TIME ABROAD LAST YEAR WILL DISCUSS THEIR EXPERIENCES.

SPONSORED BY PROVIDENCE-IN-EUROPE
HARKINS HALL/ROOM 342
865-2114

Lasalle Pharmacy

Friendly Expert Prescription Service

Out of State Prescriptions Easily Transferred
FULL SERVICE COMPUTERIZED PHARMACY
FULL LINE OF HEALTH & BEAUTY AIDS
MAJOR CREDIT CARDS

EXPANDED HOURS
MONDAY - FRIDAY 7:30 - 9:00
SATURDAY 8:30AM - 9PM
SUNDAY 8:30AM-6PM 1009
SMITH ST, PROVIDENCE

YOUR CAMPUS
PHARMACY
861-1194

Any Student:

Interested in beginning or continuing with the Pastoral Council Adult Reading Program Please sign up in the Chaplain's Office. A Training Workshop for the Tutors will be held and weekly teaching sessions on Monday nights are planned. All sessions held on campus -No transportation required.

New Resident Director Appointed To P-I-E

The Providence-in-Europe office, which sponsors a variety of study abroad options for P.C. students, has announced that a new Resident Director has been appointed for the Fribourg program. Mr. Charles A. Ashley, who holds a bachelor's degree from St. Anselm College and a Master's degree in philosophy from Marquette University, began his duties as the new Resident Director in Fribourg, Switzerland on June 1st. He was selected from a large number of candidates considered during the Spring Semester and replaces Mrs. Kate Nation, who served in the position for four years.

Providence College, with the co-sponsor La Salle University of Philadelphia, offers Junior students an opportunity to study for a year at the University of Fribourg. The College employs a Resident Director to

represent it in Fribourg, and he has responsibility to maintain liaison with the Swiss university, locate and supervise the housing of students with Swiss families, and generally conduct the day-to-day affairs of the program. Approximately fifty students from P.C., La Salle, and other institutions participate annually.

Mr. Ashley and his wife Lori, who is a graduate of the University of Vermont, participated as undergraduates in the Fribourg program in the 1979-1980 academic year. After their return to the United States, they completed their college education and were married. In Charles' words, "returning to Fribourg as Resident Director is the answer to a long-time dream because Lori and I have such happy memories of that experience." Lori Ashley will serve as office assistant to the

Director and will be involved directly in working with students during the year.

Charles and Lori will live in the apartment maintained by P.C. in Fribourg and work in the American College Program office at 91 Rue de Lausanne, close to the University and right next door to the Albertinum, the Dominican priory in Fribourg. The usual term of office for the Resident Director is three years, and the Providence-in-Europe program feels confident that P.C. students will be well-served by the Ashleys.

Students interested in more information about the Fribourg program may inquire at the Providence-in-Europe office in Harkins Hall, Room 349 or call 865-2114. Mr. James F. Flanagan is the Director of Study Abroad; Associate Director is Mrs. Jennie Trimble.

Are You Prepared To Face the Future???

By Meg Neumann

One morning during the end of the summer I was innocently sitting in my living room reading the newspaper. I was so relaxed. I had a cup of coffee in one hand, the Sunday Times in the other and I had a full day of freedom in front of me. All of a sudden I had the strange sensation that someone was watching me. I looked up from the paper and saw him coming towards me. Oh no! He had an inquisitive look on his face. Then I heard it. The worst question of all sprang from his mouth—"Meg, what are you planning to do after you get out of college?" AAAAHHHH!!!!!! I shrank back in horror and

looked at my father as if he had just killed my best friend. My response? Well, I used a standard answer which I had heard my older brothers and sisters use when they were confronted with the same question, "Ummm, I have to go, I hear Mom calling me."

No, my father is not a monster. He is like any typical parent who wishes to know what his child is going to do with his or her college education. Although the scene I described above is slightly exaggerated, many students, especially seniors, cringe with fear at the thought of the future. However, along with this fear should come a strong sense of excitement as you begin to realize that you too will one day be striking out on your own. Considering that May is only a mere eight months away, that "one day" is already within reach for the members of the class of 1990. Graduation from college will inevitably cause our lives to change in many ways. One change that seems to be the most prevalent is the fact that we will all have to find something to do in June of 1990. Fortunately, there are many options: You can get a job, go to graduate school, join the Peace Corps, enlist in the Army, sit around and eat popcorn all day, etc., etc., etc. The choices are endless. Of course, this can make the decision making harder, but, depending on what you're planning on doing, Providence College does offer some helpful resources. There is the Student Development Center where you can go to find out about internships in a field that interests you. You can get a list of some Providence College alumni and where they work and talk to them about their jobs or graduate school experiences. Then, there is the Job Search/Placement Center, located in Slavin 105. Counsellors are available to discuss your career goals or to help you decide what kind of career you many want to pursue. All you have to do is to walk in and make an appointment. And, how about your professors? They see you working in class and may be able to help you discover and build on your strong points. Now that I have made all of these suggestions on how to plan ahead, I had better get over to Slavin 105 so that I can give a real answer the next time I'm asked, "What are you planning to do with the rest of your life?"

Aerobics

(continued from page 7)

dangers of an improperly executed stretch, and encourages questions before and after class.

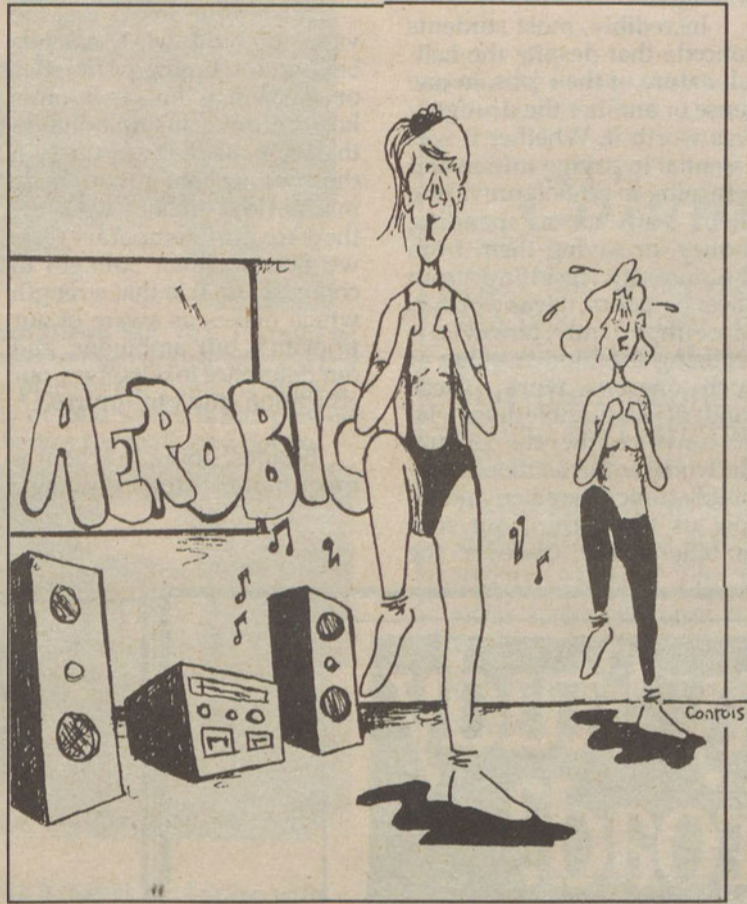
Aerobic classes are the rage of the '80's, as many people view them as a fun way to get their daily dose of exercise. It increases the heart rate and speeds up the metabolism, while toning up the muscles. The classes are held on the basketball courts at Peterson, so a lot of shock due to movement doesn't harm your feet. Monday, Wednesday (4:00) and Friday (3:00) are high-impact sessions, which involve a lot of jumping and kicking. In low-impact classes (Tuesday and Thursday at 5:00), one foot remains on the ground at all times and the focus is on muscle control. The alternation of days alleviates the risk of shin splints which can be caused by too much impact on the feet.

Classes are open to everyone, and the cost is included in the tuition. Considering that

most other sessions cost a minimum of four dollars per hour, this is a big incentive to take advantage of the service. It is most certainly not limited to women either—more and more males are discovering the benefits of aerobic exercise. It is as challenging as any sport, and a good way to meet people. You don't have to be in great shape or totally coordinated to survive a class—you are encouraged to work at your own speed, and pulse is taken frequently to ensure that you aren't working too hard.

So next time you see the mobs trekking over to the Rec Center, throw on a pair of shorts and join them! It's challenging, but it's also a productive way to spend your afternoon instead of watching the sitcoms on TV. Your body will love you for it after the initial soreness wears off, and you'll have a lot more energy. Keep moving!

Megan Grennan is an English major, and a member of the class of 1992.



"I do not believe that sheer suffering teaches. If suffering is alone taught, all the world would be wise, since every-one suffers. To suffering must be added mourning, understanding, patience, love, openness, and the willingness to remain vulnerable."

Anne Morrow-Lindberg
Hour of Gold, Hour of Lead

The Student Development Center and the Chaplain's Office will soon be starting a peer-support group for students who have recently experienced the loss of someone close to them— a parent, a grandparent, a brother, a sister, a friend... The purpose of the group is to help students to gain a better understanding of the grieving process, provide an outlet to share feelings and provide support to one another.

If you are interested in being involved or knowing more about the group please contact:

Jackie K. Mackay— Student Development Center— Slavin 209; 865-2243.
Fr. Adrian Debash— Chaplain's Office— Slavin 116; 865-2216.

Join The 1989-1990 Cowl Staff

Applications for the Position of
Business Editor

are now being accepted Submit
Resume and writing samples by Friday
October 6, 1989
Interview of Canidates Required

Be Part of A Fifty Year Old Tradtion!

Wanted

PC Men's Basketball Team Managers

Stop by the Men's Basketball Office
in Alumni Hall

9 a.m. - 4 p.m. Monday to Friday To Make an appointment

VOTE **KIM D AMICO** **5 ON THE BALLOT**
FOR PRESIDENT **CLASS OF 93**

7 ON THE BALLOT

CRAIG FRICK
FOR FRESHMAN CLASS VICE-PRESIDENT

Classifieds

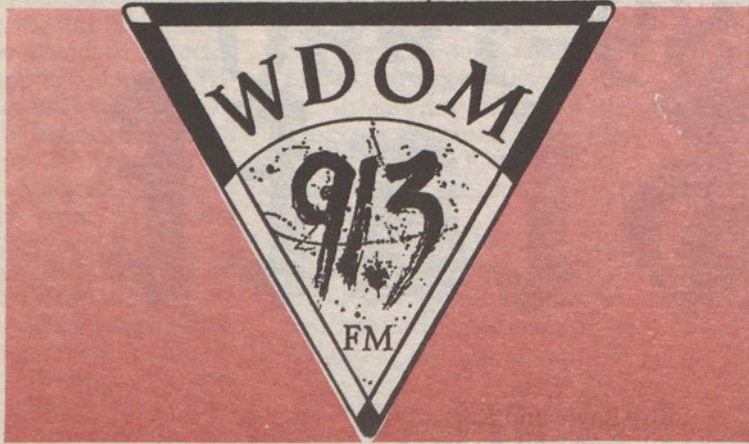
Papers to write? No problem. College Graduate will show you how to write a successful paper no matter what the topic. Call Now before the work piles up! Anna. 434-4103.

Energenic person to be a Rep. for Coppertone Springbreak trips to Cancun, Daytona, Nassau and Jamaica. Best programs available ANYWHERE. Great incentives and free trips possible. Call for more information.....1-800-222-4432 and ask for Bruce or Brenna.

Act In TV Commercials. High Pay. No Experience... All Ages, Kids, Teens, Young Adults, Families, Mature People, Animals, Etc. Call Now! Charm Studios. 1-800-447-1530 ext. 7861

College/Campus representative Earn Top \$. Flexible Hours. FUN. Enjoyable. Rewarding Gross Up To \$20,000 Per Year By Helping Friends Receive Grants/Scholarships. For Info Please Call: (213)967-2115.

Arts & Ent



Revamping of WDOM

by Kate Malloy

The WDOM studios received somewhat of a face-lift this summer, along with the rest of Joesph Hall. The discovery of asbestos in the walls of the studio made their replacement necessary. The station benefited by getting newly painted walls and ceilings. Tim Muessle, WDOM's General Manager, stressed the importance in

the lowering of the ceilings because it reduces dust which can be so harmful to broadcasting equipment.

Unfortunately for the WDOM staff, all the equipment had to either be moved, taken apart or rearranged to allow for the renovations. Despite the inconveniences created, the WDOM staff has erected a temporary studio and hopes to broadcast either Sunday or Monday. The schedule will be the

same as last year, 7 a.m. to 2 a.m. daily.

Tim Muessle is looking forward to the new broadcasting year as well as working with what he describes as "the greatest staff in the history of radio." The station will remain very student oriented and will work very closely with many of the organizations at P.C. such as the Board of Programmers, Student Congress, and The Cowl.

The sports department headed by Shawn Palmer will be covering all the hockey games, Lady Friar basketball games, and in the spring, the baseball games. The sports department also has a chance to do the play by play of the mens basketball team.

The Promotion Department, which gave away the grand total of \$22,000 last year once again has a long list of ideas and give aways for this year.

While WDOM has big plans for the 1989-90 broadcasting year, they still need lots of help. Anyone interested in helping out the WDOM staff can get an application in Joesph Hall 106.

"Better Than Louie's"

by Christine Hayes and John Carew

We are all familiar with the tales of the seventeenth century's horrifying witch hunts, both in the colonies and in all of Europe. In "Vinegar Tom" author Caryl Churchill presents a very different outlook of the witch trials, particularly in England. This production from Brown University at Leeds Theatre will be running until October first.

There were surprisingly two levels of action. The dialogue and physical setting were representative of Puritan England. The second level brought us to the present day. This was achieved through periodic injections of singing and dancing. These scenes transcended the three centuries and forced us to evaluate the parallels between the obscenities of the witch trials and the role of women today.

We found the play's unique approach very successful in relaying its story of the witch trials and in provoking social

thought. The actors were well cast and well directed. It becomes very easy to become enveloped by the action. Although this play lasted a full two hours, we never once considered glancing at our watches. The small stage at Leeds theatre was quite conducive to this play and was a well used tool by all involved. Because the motion of the actors was both in front of and around us, there was a sense of entrapment forcing us to become part of the plot.

If you consider yourself a socially conscious individual who is willing to part with five dollars and two hours of your time, then skip Louie's one night this week and make your way to the East Side.

"Vinegar Tom" is a satirical, feminist production that emphasizes the fact that of the estimated nine million people executed for witchcraft, only a handful of this number were men. For the women of this era, there was no repentance, no restitution, no day of mourning.

GRAND OPENING



- MONDAY NIGHT FOOTBALL**
- * 5 Closed Circuit T.V. s
 - * Soda, FREE Popcorn
 - * Pool Table
 - * Basketball Toss
 - * Free T- Shirts for First Fifty
 - * Raffle

**OPEN WEEKNIGHTS
AND
WEEKENDS
IN
LOWER SLAVIN
Next To Alumni Cafe**

Grand Opening

**of
THE NEW
P.C. MALL**

Tuesday, October 3rd
11 a.m. - 3:30 p.m.

**COME VISIT!
FREE
SAMPLES!**

Entertainment

Perishable Theatre Opens with Joan of Arc

The Perishable Theatre will begin its fall season with a production of the first part of David F. Eliet's trilogy on Joan of Arc, *Joan Transfixed*. The show will open on September 28 and play Thursdays through Saturdays from the twenty-eight through October 14. Curtain time will be 8PM. The show will be presented at the Company's studios, The Space, at 124 Washington Street on the third floor.

The Joan Trilogy is Mr. Eliet's personal interpretation of the life of Joan of Arc. The first part of the play deals with the vision Joan has telling her to go and rescue the Daughin from the siege of Orleans. Mr. Eliet's Joan is an angry rebellious child who bears almost

no resemblance to the simple, pious maiden of legend and modern drama. His character is more in line with Shakespeare's Joan La Pucelle in Henry VI Part I and the Joan who was the object of Voltaire's scathing satire. Joan, herself, has always been problematic, since she was an historical aberration, a figure without precedent in Medieval History. That, as a woman, and a peasant woman at that, she ever managed to gain access to the court of the Dauphin, let alone take command of his armies, was extraordinary.

Mr. Eliet's Joan is a girl passionately longing for life in a death oriented and corrupt society that has been ravaged by plague, famine and a

hundred years of war. An unformed adolescent with no real direction, she can neither control her feelings about what is wrong with the world that surrounds her nor protect herself by conforming to what is expected of her. She is constantly at odds with her family, the local authorities and the village church for her escapades. All of this changes, however, when she encounters a crippled itinerant friar known as brother Le Fleur. Le Fleur claims that he has been given a vision of the savior France, the maiden warrior who will lead her armies to victory over the English. And now, after a hundred years of searching, he knows that Joan is the girl he has been looking for.

Alice Opens at Wickendon

The Wickenden Gate Theatre will open its 1989-1990 production year with *A...My Name is Alice*, a musical review conceived by Joan Micklin Silver and Julianne Boyd. *Alice* was first produced by the Women's Project at the American Place Theatre in New York City, and contains songs and sketches by over twenty-five writers, both male and female. *Alice* will open Wednesday September 27, 1989 at 8:00 p.m., and continue on Thursday, Friday, and Saturday evenings through October 28, 1989. There will be a matinee performance on Saturday October 7, 1989, with a curtain time of 2:00 p.m.

The director for *Alice* will be Patricia Tulli-Hawkrige, who was seen as Marta in the WGT production of *Waiting for the Parade* this past season. Ms. Tulli-Hawkrige describes *Alice* as a "celebration of womanhood." It is "a chance to laugh at ourselves and to give a

new meaning to the old adage 'I enjoy being a girl.'" As Julianne Boyd has said about the show, "We decided to put together an evening that was funny and moving, but one that makes a point more through entertainment than preaching." As well, Boyd adds, everywhere men have loved the show —once they can be persuaded to attend it.

Comprising the cast of *Alice* will be four new faces to the WGT stage. They will be joined by Jennifer Ondrejka, who was last seen as Mrs. Alving in WGT's critically acclaimed production of *Ghosts*. In *A...My Name is Alice*, each actress will portray a variety of characters. In alphabetical order, the cast for *Alice* will be Jeannette Gama-che, Kristen Hardy, Doli Henshaw, Susan E. Iacobellis, and Jennifer Ondrejka.

The musical director of *Alice* will be Nancy Rosenberg, who assisted the WGT cast with the songs in *Waiting for the Parade* last year. She most recently served as Musical Director for The Perishable Theatre Company for their production of *East of the Sun, West of the Moon*, a production for which she also composed the music. Scenic design and lighting design will be by Madolin Maxey, with costumes by Kathleen Bebeau-Katic. Choreography will be by Suzanne Hutchinson, and the pianist during the performances will be Melanie White.

A...My Name is Alice will open on Wednesday September 27th, and then play on Thursday, Friday and Saturday evenings until October 28th. Curtain time for the evening performances is 8:00 p.m., and there will be a matinee on Saturday October 7th with a curtain time of 2:00 p.m. General admission tickets on Friday and Saturday evenings are \$10; \$8 for students and seniors. Tickets for the Thursday night performance and the Saturday matinee are \$7. Group rates and season subscriptions are also available. Tickets may be reserved by calling the box office at 421-9680.

The Wickenden Gate Theatre is funded in part by the Rhode Island State Council on the Arts.

At The Movies

Sea of Love

Directed by: Harold Becker
Written by: Richard Price
Starring: Al Pacino, Ellen Barkin, John Goodman

This is the first of what will hopefully be a weekly column by Kathy Boyle and Kate Bradley. We are by no means professional movie critics nor is our intention to give a complete plot summary leaving no reason to see the movie yourself. Our only goal is to help you in deciding if a movie is worth your hard earned \$5.50 and your time or if you would be better off in Louies shooting some pool, (Oh, yeah, or in the library studying).

Our Sundays will never be the same. We no longer find ourselves comatose in front of the T.V. piecing together the weekend or making excuses for our inability to even open a book. As we make our way to the Warkick Showcase Cinemas, we have no preconceived notions of what the next two hours hold for us. Concerning the "Sea of Love", we know only what the T.V. promos have depicted a "Fatal Attraction" type movie starring Al Pacino and Ellen Barkin. Arriving with minutes to spare and having to forego any purchase of popcorn or Ju-Ju-Bees, we anxiously await the start of this action thriller, which surprisingly had us booth hooked from the first scene and did not stop until the credits rolled two hours later. What we originally thought were a missed matched trio of actors, proved very believable as their chemistries on screen flowed in a natural and convincing manner. Al Pacino from "The Godfather" and "Scarface" fame, Ellen Barkin best known for her role in "The Big Easy", and supporting actor John Goodman, of T.V.'s "Roseanne", should be commended for their convincing and talented acting. Pacino's portrayal

of a lonely and desperate twenty year veteran of the N.Y.P.D. is powerful and commanding while incorporating sympathy and compassion. Although Pacino's performance is the most prominent throughout the movie, the contributions of Barkin and Goodman create a necessary and much needed diversity to the somber, desolate character Pacino portrays. Both Barkin's "Femme Fatale" and Goodman's lightheartedness add a new dimension to the typical action thriller.

Barkin, as the leading suspect in a series of bizarre killings, first becomes involved with Pacino in part of his clever plan to catch the killer. With the evidence stacked against her, Barkin's Helen Cruger (no relation to Freddie) finds herself in an erotic sexual affair. The relationship between Goodman and Pacino, as a two man detective team, evens out the eroticism in this movie by adding a dose of humour and comradery. Goodman's clever one liners throughout the movie manage to steal scenes and even managed to provoke laughter from the old blue-haired couple behind us. Eroticism and humour, even though prevalent throughout the movie, were only secondary to the overall suspenseful drama which was heightened by the ominous use of music and the ironic "Sea of Love" ballad.

Overall, we both feel this movie is worth your \$5.50. Originally, we hoped to present two opposing views. However, the merits of both the film and the acting do not allow us to do so. While some of you may find a major strength of this movie in the less than conservative dress of Ellen Barkin, others will find the mystique of Al Pacino more fascinating. We think "Sea of Love" could definitely be an added pleasure to your weekend as it was in ours.

POSITIVE ID REQUIRED

Little Boy Bier

SEPTEMBER 28TH - THURSDAY

9:00 PM

FREE GIVE-A-WAY

ROLLING ROCK BEER NIGHT

LIVE ROCK AT DOWNSTREET SPORTS BAR

421-7441

Class of 93

Vote for

Greg Lahr

for REPRESENTATIVE

On the Occasion of the Celebration of THE JEWISH HIGH HOLY DAYS

The Chaplain's Office
on behalf of the Entire Providence Community
Extend Our Sincere Best Wishes For The
Peace & Blessings of

Rosh Hashana, Yom Kippur and Succot

To All of our Jewish Students Faculty, Staff
Alumni and Friends As They Observe These
Holy Days.

SHALOM

Arts & Entertainment Update

On Screen

Avon Repertory Cinema, Thayer St., Providence. 421-3315 *The Navigator* 7:15 9:30

Cable Car Cinema, N. Maine St. Providence. 272-3970. *Wings of Desire* 7:00 *Do the Right Thing* 9:30 *Rocky Horror Picture Show* Fri. Sat. 12:00 p.m.

General Cinemas

Lincoln Mall, Rt. 116 Lincoln. 333-2130

Warwick Mall 738-9070 *Field of Dreams* 7:10, 9:30 *Turner and Hooch* 7:30, 9:40 *Dead Poets Society* 3:15, 9:15 *Honey I Shrunk The Kids & Tummy Trouble* 1:00, 7:05 *The Package* 7:35 9:45

Showcase Cinemas

Warwick Off 95 exit 8a, 885-1621 Seekonk Exit 1 off Rt. 195, 336-6020 *Parenthood* 7:10, 9:55, W/S *Uncle Buck* 7:20, 9:45 W/S *sex, lies, and videotapes* 7:35, 9:45 W, 7:45, 10:05 S *Batman* 7:00 9:15 W/S *Casualties of War* 7:25, 10:05 W/S *The Abyss* 7:20 10:10 W, 7:00 9:40 S *Relentless* 7:20, 9:30 W *When Harry Met Sally* 7:15, 9:45 W/S *Kickboxer* 7:40, 10:10 W/S *Sea of Love* 7:45 10:10 W/S *Cookie* 7:30 10:10 W/S *Relentless* 7:20 9:30

Clubs

JR's Fastlane, Washington St., Providence. Call 273-6771. for further information.

Kirby's Rt. 7, Smithfield 231-0230 Thurs.-Sun. What Matters

Last Call Saloon, 15 Elbow St., Providence. 421-7170. Thur. Steve Smith and the Naked's Fri. Kenny Lyon Sat. Tom Keegan

Livingroom, 273 Promenade St., Providence. 521-2520 Thur. Danger, Danger Fri. O. Positive/ Rash of Stabbings Sat. Dead Milkmen

Periwinkles, The Arcade, Prov. call 274-0710 for more info.

On Stage

Rosie O'Grady's, 250 South Main St.
Trinity Square Repertory Co., 201 Washington St., Providence. 521-1100
No Place, No Poetry Through Sept. 24

Wickendon Gate Theatre 134 Mathewson St. Providence.
My Name is Alice. Sept., 20- Oct. 21

Brown University Theatre. Providence. 863-2838
Vinegar Tom Sept. 21-24 and Sept. 27-Oct. 1

Zeiterion Theatre 684 Purchase St. New Bedford M.A. 508-997-5664

Colonial Theatre 1 Granite Street Westerly, R.I. 596-0810 *Godspell* runs Oct. 12-22

Concerts

Boston Symphony Orchestra Boston, Ma. 617-266-1492

Rhode Island Philharmonic, 334 Westminister Mall, Providence. 831-3123

Art Exhibits

Rhode Island School of Design Museum 224 Benefit St. 331-3511
Faces and Places in American Art. Sept. 17

Rhode Island Watercolor Society Slater Memorial Park, Pawtucket. 726-1876

Brown University Art Center 64 College Street, Providence Wendy Edwards Sept. 9 - Oct. 22

U.R.I. Main Gallery Kingston R.I. 792-2131 Photographs by Dana Salvo Sept. 18 - Oct. 6

NICK'S SPA & GRILL

337 Douglas Avenue, Providence

Monday-Friday 6:00 A.M.-10:00 P.M.
Saturday 8:00 A.M.-8:00 P.M.

Ask For Our Daily Specials

Italian Style Sandwiches, Coffees and Snacks

455-0345
DELIVERY ORDERS
STARTING AT 4:00 P.M.

Next Door to
Liquorama
Liquor
Store

Nick's Coupon
Buy 4 Large Sandwiches
Get One Liter of Coke
Diet Coke or Sprite

FREE!

With This Coupon
Good Until Sept. 30.



IN THE FINANCIAL WORLD, THERE'S ONLY ONE STAR.

\$30 billion in assets and growing. A leader in profitability as well as product innovation. A bright financial star.

That's Fleet/Norstar. With the resources, the people, and the desire to be the best.

If you're an ambitious professional, join Fleet/Norstar. And become part of a star performance. To learn more, attend our:

INFORMATION SESSION

for the following programs:

Auditing
Financial Management/Controller's Division
Fleet Credit Corporation/Business Credit

Monday, October 2
6:30pm

Moore Hall, Room 1

Listen as our Senior Managers and recent graduates share their experiences and discuss Fleet/Norstar's Management Training Programs.

Fleet/Norstar

BOP News

FILMS THIS WEEK:



THURS. SEPT 28

PLANES, TRAINS and
AUTOMOBILES
in 64 Hall
8 and 10 p.m.

SUN. OCT. 1

WORKING GIRL
in 64 Hall
8 and 10 p.m.

COFFEEHOUSE

Tuesday, October 3

Coffeehouse to go
Comedy Connection with pretzels
popcorn and soda.

in 64 Hall
10 p.m.

\$1 admission at door.

PLANES, TRAINS AND AUTOMOBILES



THE LAST RESORT

190 DAYS (BUT WHO S COUNTING) RESORT

D.J. & DANCING

FRIDAY NIGHT- SEPT. 29 9-1 A.M.

\$5. ADMISSION

Ticket policy For The Last Resort.*****

- 1. No quest tix will be sold
- 2. MUST show P.C. Id only.
- 3. No admittance to Resort without a P C Id.
- 4. No Tix sold at the door.
- 5. One ticket per student with Id will be sold.

OUTDOOR CONCERT

Saturday, Sept. 30 12-4p.m. on Slavin Lawn

Subs and Soda

Entertainment

ALL THE VOICES

Student Congress

Scoop Says...

by Jeffrey R. Coughlin

The Student Congress passed a monumental piece of legislation that will hold Congress members more accountable to you, their constituents. As elected officials, Congress realized that it was necessary to live up to certain standards. Since the old ethics policy was not doing the job, it was revised. The new policy allows for fewer absences on the part of each Student Congress member. On the whole, this policy will result in more responsible Congress members.

Everyone takes their job seriously, but this new ethics policy will make Congress members more accountable for their actions. I am very proud of everyone on Congress this

year and know that this will only improve the work we do here at P.C.

Just a reminder to everyone: Congress is here to serve YOU! Without your input and help we could not accomplish anything. Congress is running elections tomorrow for Freshmen class officers and Dorm presidents and treasurers. Please turnout and vote! Freshman year is the beginning of your four years here and should be something to remember. A vote is the only way to express your preference of whom you think would be best able to serve you. If you have any questions or comments or are just curious about what goes on in Congress, stop by Slavin Room 214 or our meetings every Monday night at 5:30pm in Slavin Room 203. Thanks.

A Community Responds

By Caroline Fargeorge

The Student Congress is very happy that neighbors and business people in our area are recognizing the work we do in our community. Thus far, we have received many compliments for our diligent efforts. As you know, the Student Congress and BOP cleaned up the Elmhurst neighborhood recently. In appreciation of our efforts, Marie of Marie's Place Restaurant, has offered to have all 80 members of the clean-up crew over for breakfast - free. She'll never know how much we starving off-campus students appreciate this. So, the next time you are in Marie's for breakfast, thank her for acknowledging the work we do in our community.

We have also received compliments from many other neighbors in the area. One

woman who is a landlord in the area, said that we are doing a great job and should keep up the good work. Another neighbor said we were so quiet the other night that she did not what happened to us. I think it would help greatly if we got to know our neighbors better, or just say "hi" when we see them. It does not take a lot of energy and it can only help the situation.

A community volunteer program is now in the works in Student Congress committees. This program would involve P.C. students volunteering their time to elderly and others in the area. We are also planning a walk-a-thon to benefit local charities (see related article). All the community activities we plan show that we care about the place in which we live. Please show this to others on an individual basis as well, and keep up the good work.

Providence College Off-Campus Living Week

October 2-6, 1989

Monday, October 2 in 64 Hall 3:00pm
HOME SECURITY AND PERSONAL SAFETY SEMINAR

Tuesday, October 3 in 64 Hall 3:00pm
MEALS AND NUTRITION SEMINAR

Wednesday, October 4 in 64 Hall 4:00pm
STUDENT RIGHTS AND RESPONSIBILITIES LECTURE with James H. Reilly, Esq., Student Congress Attorney

Thursday, October 5 in Peterson Center Court 1 at 6:00pm
SELF-DEFENSE CLASS

All events are co-sponsored by Carolyn Ryan, Director of Off-Campus Housing, and A. Paul Cervini, President of the Off-Campus Residents Organization (OCRO).

Everyone Welcome

Elections

For Class of 1993 and Residence Board Tomorrow

Class of 1993 Elections 9am to 4pm in Lower Slavin
Residence Board Elections 4:30 - 6:00pm
in Raymond Cafe

*Exercise Your Right
to vote!*

A Presidential Profile

by Caroline Fargeorge

Board of Programers, for those of you who do not yet know, is the student organization on campus that governs all extracurricular activities here at P.C. BOP has been in existence since 1980 (before that it was known as Board of Governors). This year BOP's president is a member of the Junior class; this position has always been held by a senior class member - until now.

Matthew F. Gaffney has been involved in BOP since Freshman year when he worked various events. In his Sophomore year, he was Chairperson of the Research and Development Committee of BOP. This year he serves as President. Matt dedicates many long hours to BOP, which sometimes makes it difficult to keep up with his double major of Philosophy and English. But Matt thinks it

is well worth it; he has learned many things from serving as BOP President. Matt oversees the programming of over 200 events which helps him develop his management and financial skills. This experience will definitely be an asset when he enters the working world after graduation.

Matt is very excited about the success BOP has had thus far. The Stag Dance, which BOP co-sponsored with Student Congress, was a great success and very well attended. As a matter of fact, attendance has increased significantly in all events the BOP has sponsored. This is in part due to the large Freshman class presence at events. Along with regularly planned events, such as films and coffeehouses, the BOP is planning a Montreal Weekend, a trip to the Medieval Manor, and a concert featuring the 10,000 MANIACS. Although Spring Weekend has been

cancelled this year (due to problems last year), Matt is "still interested in getting Spring Weekend back." He feels that all the successful, well attended events that the BOP sponsor is a step in that direction.

Along with his BOP duties, Matt enjoys basketball, writing and being involved with the Friar organization. The Friars are similar to the BOP in that each organization is like "a big family which is very close." Matt has benefited from being involved in these various activities and encourages others to get involved in any group in which they are interested. Participating helps develop basic skills, including working as part of a team, which is very important. Matt is not sure whether he will run for re-election next year, but he will definitely "stay involved in student activities" in one way or another.

Commuter Board News

By Chris Tucciarone

The annual Freshman commuter luncheon took place on September 18 this year. It allowed Freshmen to meet each other and get acquainted with fellow commuters. Freshmen also had an opportunity to hear information about Providence College clubs, organizations and departments from some guest speakers. We thank all who attended the event.

All commuters should be interested in this next bit of news: Starting October 10 at 8am, the Commuter Board will offer free coffee and doughnuts in Slavin Room 111. Get down there fast - goodies are limited. Also, try to fill out the information sheets about yourself while you are in the commuter lounge. This will help facilitate the mailing

Looking for a little extra cash?

Spitz Photography is looking for a few students to take picture orders in Lower Slavin on Thursdays and Fridays

Hours and Dates are flexible
Contact Caroline in the Student Congress Office if you are interested

Walk-a-thon Planned

By Marianne Monte

Coming up in October is an event in which every person at P.C. can get involved. I am talking about "Takin' It To The Streets", a walk-a-thon sponsored by Student Congress to benefit The Ronald McDonald House. The Ronald McDonald House, if you are not aware, is a home where children with cancer, and their parents can stay during therapy or surgery in order to be close to the hospital. The Ronald McDonald House in Rhode Island is located on Rhode Island Hospital's grounds.

Marianne Monte, who is running the event, is excited that the students can help such a needy group of people. Ev-

ery person can participate in the event. Each person will need a sponsor for the walk. Marianne is planning the walk-a-thon route around the P.C. campus. It should be about 3-5 miles and will take place October 22, 1989 at approximately 1:00 PM. Marianne and the Student Congress are hoping that many students will participate in the walk-a-thon to benefit these children. "We are concerned about the welfare of others, and, as students, are trying to show that we act on these concerns", said Monte. Look for more details to follow on this page, or get in touch with Marianne in the Student Congress Office, Slavin, Room 214.

Providence College

The Commision Seeks Landlord Intervention

by Dan Walsh

On Tuesday, September 19, the Elmhurst Commission met with local landlords in an attempt to incorporate their needed involvement into the improvement of the community. The Commission stressed the importance of the landlords to be fully aware of their responsibilities while renting to students. They must abide by and adhere to the guidelines established by the City of Providence as property owners, or face the consequences. The Commission seeks to resolve the off-campus tension by having the landlords become more attentive to the behavior of their student tenants towards their surroundings.

The meeting can only be termed as a "tentative start" towards utilizing landlord cooperation because of the small amount who were in attendance. Moreover, approximately fifty of the two-hundred and fifty landlords took the time to listen and become aware of their role in this crucial situation. The Commission announced to those in attendance that the Housing Authorities of Providence have already checked the neighborhood for violations and will continue to monitor the Elmhurst neighborhood. They are investigating both the safety violations that threaten the lives of the students, and the renting of illegal units to four or more per-

sons. The Deputy Director of Building Safety, Malcolm Ries, stated that he does not want to innate "a battle of code enforcement with the Landlords, but we will act immediately upon any violation that endangers the safety of the tenants".

Deputy Reis asked the landlords to cooperate with the housing officials and avoid fighting with the housing courts because their decisions will be swift and very stringent. He also emphasized that the courts will punish the appropriate offender, either the landlord or the student, and ignorance of the law will not be an acceptable excuse. Therefore, those who are summoned to appear before the housing court must attend the hearing or face further prosecution. Deputy Reis states that the purpose of this crackdown is to hold those individuals who are in violation accountable for their actions and force them to live up to their responsibilities as home owners in the City of Providence.

Commission member Nancy Palmisciano, president of the Elmhurst Association, wants to develop an alliance between the residents and the landlords. This plan consists of the residents calling and reporting to the landlords the events that transpire on their property that deserve to be discussed and resolved. She also hopes to end the days of the "profit making landlord who has no concern for the well-being of the neigh-

borhood and is solely motivated only by money". However, one landlord responded to this stereotype by arguing that he, and many of his colleagues, "are struggling to break even, and they are fortunate if the house pays for itself." Many of the landlords also commented that they were dismayed by the number of absences, and they too, want to work with the Commission to find concrete solutions to the current problems.

Furthermore, Fr. Quigley wants the "three key players—the police, the College, and the landlords" to band together and eliminate the disruptive elements of the community. Fr. Quigley wants the rights of the students preserved at all times; therefore, he hopes that the landlords accept the responsibilities associated with student tenants while accepting the rent at the end of the month. He hopes to establish better relations with the landlords because of the dramatic effect they can have upon the situation and the need to hear their point of view. However, he admits that he was disappointed in the low turn-out, and he hopes for more involvement from the landlords in the future.

The Commission concluded the meeting with the following proposals: a sample lease to be issued to the landlords who wish to rent to P.C. students, a requirement that all future leases have parental signatures, an update from the Housing

Authorities upon the number of violations to health and occupancy regulations, and the issuing of a second letter to establish another meeting with the landlords. The Commission ended the session by congratulating the students who participated in the neighborhood clean-up. "This and other positive actions on the behalf of the students will help to ensure a better living environment for the entire community," commented Chairman Charles Pisaturo.

Grand
Opening of
Sidelines
Sports Pub
Monday
October 2nd
In Lower
Slavin

ATTENTION SOPHOMORES

*Junior Ring Weekend
Interviews
will Be Held*

September 28, 29 October 3, 4 & 5
Sign Up For An Interview for one of
the Nine Committee Chairpersons
in the Student Congress Office Now.
Short Resume Required
for Interview

GET INVOLVED IN
PLANNING YOUR JRW

Midnight Madness

Is Coming
With Al McGuire
October 14

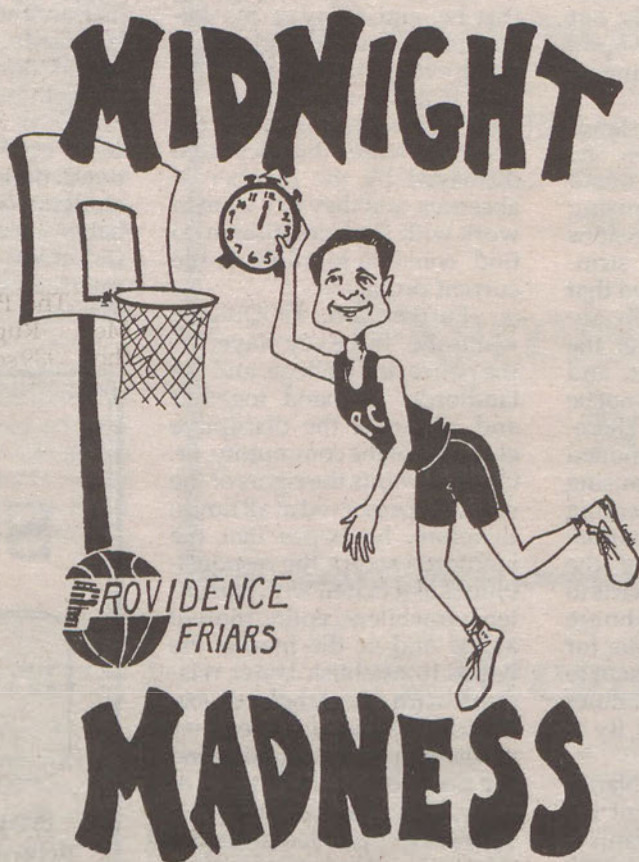
Support your Basketball Team
Before the Season Opens

This Event is Co-Sponsored by The Student Congress and The Athletic Department

Student Congress Presents...

**3 on 3
Tourney**

**Midnight
Madness
Road Race**



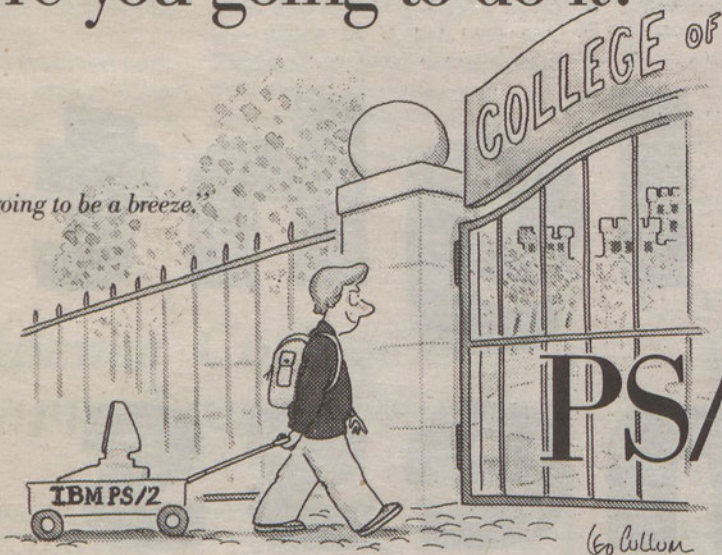
**Hot Shot
Shoot Out**

**Slam Dunk
Contest**

**Banner
Contest**

Sign Up For All Events in the IAB Office

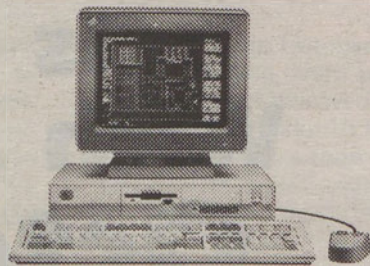
How're you going to do it?



PS/2 Model 30 286—1Mb memory, 80286 (10 MHz) processor, one 3.5" diskette drive (1.44Mb), 20Mb fixed disk drive, IBM Mouse, 8513 Color Display, DOS 4.0, Microsoft® Windows/286, Word 5.0,* hDC Windows Express,™ hDC Windows Manager™ and hDC Windows Color™ **\$2,299**



PS/2 Model 50 Z—1Mb memory, 80286 (10 MHz) processor, one 3.5" diskette drive (1.44Mb), 30Mb fixed disk drive, Micro Channel™ architecture, IBM Mouse, 8513 Color Display, DOS 4.0, Microsoft Windows/286, Word 5.0,* Excel,* hDC Windows Express, hDC Windows Manager and hDC Windows Color **\$2,799**



PS/2 Model 55 SX—2Mb memory, 80386SX™ (16 MHz) processor, one 3.5" diskette drive (1.44Mb), 60Mb fixed disk drive, Micro Channel architecture, IBM Mouse, 8513 Color Display, DOS 4.0, Microsoft Windows/386, Word 5.0,* Excel,* hDC Windows Express, hDC Windows Manager and hDC Windows Color **\$3,499**

Great back-to-school prices on PS/2's.

Just in time. You can pick up an IBM Personal System/2® with easy-to-use software loaded and ready to go. And best of all, you get it at a special low back-to-school price.

And that's not all. When you buy the PS/2,® you can get a great low price on PRODIGY®, the exciting new shopping, information and entertainment computer service. Start this semester up and running with a PS/2 at a low, low price.*

Now, special low prices on three models of IBM Proprinters,™ too.

**PS/2 Fair Thursday September 28, 1989
Slavin Center 1st Floor 9-4**



*Microsoft Word and Excel are the Academic Editions. This offer is limited to qualified students, faculty and staff who order an IBM PS/2 Model 8530-E21, 8550-031 or 8555-061 on or before October 31, 1989. Prices quoted do not include sales tax, handling and/or processing charges. Check with your institution regarding these charges. Orders are subject to availability. IBM may withdraw the promotion at any time without written notice.

IBM, Personal System/2 and PS/2 are registered trademarks, and Proprinter and Micro Channel are trademarks, of International Business Machines Corporation. Microsoft is a registered trademark of Microsoft Corporation. hDC Windows Express, hDC Windows Manager and hDC Windows Color are trademarks of hDC Computer Corporation. 80386SX is a trademark of Intel Corporation. PRODIGY is a registered trademark of Prodigy Services Company, a partnership of IBM and Sears. © IBM Corp. 1989

Intramural Update

By Mark Jessup

This week is highlighted by the beginning of the mixed doubles tournament in tennis and the second week of flag football. Next week we will see the opening of co-ed ultimate frisbee, so get those rosters in, preferably by Friday the 29th. We are also accepting and encouraging Free-agents. That is, if you are unable to put together a team, but still want to play, come down and sign up on the Free-agent list. We will then try to put together a team for you.

The mixed doubles tourney begins with a qualifying round. Due to the record number of

you who signed up (72 teams), the draw will be split in half after the qualifying round. Obviously, those who win will be in one draw, and those who lose, the other. This accomplishes three goals. First, it allows everyone at least two matches and will hopefully make the two draws more evenly competitive. Finally, it will also give Gayle Simpson twice as many matches to oversee, and should keep her busy and wealthy until March.

The 1989 Flag Football season kicked off last week with a slew of hard fought contests. On the first play of the year, Eric Delberto connected with John Rosenthal for an inspiring

89 yard kickoff return. It would not prove to be enough, however, as AGAC staged a furious comeback and repeatedly answered each time Truer Grit threatened. The game was not without some confrontations, instigated by who else but Delberto, who invited certain members of "G" out for a post game Tea Party.

In other action, powerhouses Psycho T's and Untouchables both looked fresh as they rolled to decisive victories. As for the first freshman game of the year, let's just say that the game could be described as confused, at times humorous, and pathetic. The game ended in a tie.



Rugby piled it up on Coast Guard, 13-0

Photo By Armando DeCastro

Rugby Romps in Opener

by Paul Eschmann

The Providence College Men's Rugby team opened their 1989 season last Saturday, Sept., with a 13-0 trashing of the Coast Guard Academy.

The PC A team dominated the game from the beginning with hard hitting and ferocious rucking and malling (Rugby talk). Yet it was not until late in the first half that PC finally broke the deadlock. On the play, Chris Dugan received an assist from Jim Reddy and rumbled into the try zone. Though the kick was no good, PC took a 4-0 lead into halftime.

Although the play was often sloppy and even plain ugly at times, the second half was much like the first. PC extended their lead when their beloved captain, John Manning, picked up a loose ball and carried ten opposing players into the try zone with him for the score.

Reddy's successful kick after made the score 10-0.

Hard hitting by Russ Broderick, Russ Acerto, and Francis Donalen enabled PC to shut out the Coast Guard. The play of backs Tommy Murray and Sean Casey made sure that the lead was never jeopardized.

Reddy capped off the scoring with a stupendous 50-yard penalty kick, which had to be seen to be believed. The kick provided PC with the 13-0 final.

In the B game, scores by Sean Beauchamp and Tommy Brophy gave PC another 13-0 victory. Even without the willing services of Billy Bishop and Tom Grace, the C, D, and E teams were still able to come away winners.

Next week Providence takes on arch-rival Bryant College. The time and location will be announced this week. All supporters welcomed.

Providence College Athletes of the Week

Geraldine Hendricken (Cross Country): The sophomore from Carlow, Ireland won the 5,000 race at the URI Invitational in helping her team win the title. Providence won the team title with a score of 18 as the Lady Friars beat Yale, defending champions.

Jeff VanTiem (Soccer): VanTiem had two goals and two assists in 4-2 victories over Merrimack and Brown last week. The freshman from Devon, Pa. had the game winning goal with 29:03 left against Merrimack and also dished off one assist. In the Brown game, he had one of the three first half Providence goals. He leads the team in scoring with three goals and two assists (8 points).

New Hours For Peterson Rec

(Already in Effect)

Friday
12 Noon-10pm
Saturday
12 Noon-10pm
Sunday
12 Noon-10pm

Interested in
writing for
Sports?

Informational
Meeting

Thursday September 28
7:00pm

In the Cowl
Office

Continued from page 20
Lady Friars leadership falls onto the shoulders of senior Co-Captains Constance Calma and Kerri Maloney.

"Kerry is really starting to come around and is returning to the form she showed sophomore year when she played number one singles," says LaBranche, "Constance is also coming around and should be strong for us the rest of the year."

The Lady Friars are looking forward to testing their strength against the best the area has to offer when they compete in the prestigious Yale Tournament from November 6-8. The squad will battle teams from Syracuse, Yale, Rutgers, Boston University, Penn and West Virginia.

In more immediate action, the Lady Friars look to continue their winning ways as they travel to UMass, UConn and Brown, all this week.

Are You Studying For Last Year's LSAT?

If you're not taking Stanley H. Kaplan to prepare for the new LSAT you could be wasting your time studying for an exam that's already outdated.

That's because unlike most test prep companies, our research department acts on test changes before others even know they exist. And with Kaplan, you'll benefit from our 50 years of experience, small classes and superior teaching methods.

So when it comes to preparing for the new LSAT, study with the one test prep company that always does its homework.

STANLEY H. KAPLAN
Take Kaplan Or Take Your Chances

Classes for Dec. 2 LSAT begin Oct. 2 & Oct. 7

Call Us Today!!
(401)-521-EXAM

Matejka, Monson Named All-Tourney at RI Pub Classic

Volleyball now 5-7

by Russell Newell

The Women's Volleyball team (5-7) begins this week preparing for the National Catholic Tournament at Boston College. The team plays Boston College on Wednesday, September 27 at 4:00 pm, and then enters the tournament. During the three tournament, which begins this Friday, they are scheduled to face St. Peters, Holy Cross, La Salle, Boston College, Seton Hall, and Sienna.

Coach Dick Bagge believes his team is beginning to come together as a unit. The Lady Friars compiled a 2-2 record in matches this past week and showed positive signs for the future. They lost a hard-fought match at home to Connecticut, 11-15, 15-9, 15-12, 14-16, 15-17. Although the Lady Friars played well throughout the match, they were not able to close the door on the Huskies in the fourth game after building a lead.

Providence rebounded after that loss to win two of three matches at the Rhode Island Pub Classic. The Lady Friars defeated Massachusetts (15-11, 15-11, and 15-6) and Brown (15-2, 16-14, 15-5) in straight games before falling in the championship to Rhode Island, 10-15, 14-16, 3-15.

Despite the loss in the final, Coach Bagge is pleased with the girl's performance at the tournament, especially the first

two matches. The Lady Friars are settling into more permanent lineup combinations, whereas earlier games in the season were tests for the combinations and line-ups that clicked.

Individual achievements were gained at the R.I. Pub Classic by Debbie Matejka and Ellen Monson, both were named to the All-Tournament team.

The season looks promising for Providence. There are many young players that are learning new roles and new jobs. One of them, freshman Jen Winslow, has played every minute of every game at middle blocker. Bagge has been pleased with her play so far, especially since she is still learning her new jobs as the college level.

Another pleasant addition to the team is Jane Norman. As a freshman walk-on, she has proven to be an exciting defensive specialist who is playing very well in the backcourt.

This year Providence is hosting the Big East Championships on November 18-19. PC won the championship in 1983, 1985, and 1987, and since 1982 they have never finished less than third in the conference. The Big East Championships will be a big event, and hopefully the PC students will show support throughout the season for a volleyball team that promises to be in the hunt come November.



Photo By Thomas Macguire
Ellen Monson, named to the All-Tournament Team at The R.I. Pub Classic, is a key to the Lady Friar Offense.

Lady Friars Fall to 2-2

Goals hard to come by in 2 loss week

By Renee Duff

The Lady Friar Soccer team was in action this week facing Connecticut and Hartford in match-ups which brought two disappointing losses. The Lady Friars record fell to 2-2 after this weeks play.

In the game against Connecticut, the Lady Friars suffered a disappointing 4-0 shut-out to a strong Connecticut team. Providence was outshot 6-25 by the Huskies, despite the efforts made by the Lady Friar front line.

Against Hartford, the Lady

Friars suffered another setback, losing to UH 2-1 at home on Saturday the 23rd. The Lady Friars were outshot again in this game by a margin of 25-12. UH's Donna Hornsl put them on the scoreboard first at the 23:15 mark in the first half with an assist by Karen Schribe. The Lady Friars could not answer the goal, and went into the half with a one goal deficit. After the half, the Lady Friars came out determined, but UH scored again, what would prove to be the game winning goal, at 49:32.

Junior Eileen Farren scored

for Providence on an unassisted goal at the 81:25 mark.

Pam Woolford started in goal for the Lady Friars in this game, recording four saves for the Lady Friars. Shannon Sweezey, injured for the beginning of the season, made her first appearance in goal this year in the second half and made seven saves.

The Lady Friars hope to return to their winning ways this week when they host Merrimack at 3:30 on Wednesday, September 27 and then travel to New Hampshire on Saturday, September 30.

Marie's Place Restaurant

592 Admiral St.
Providence, RI 02918
Take Out Orders
331-8728

Mon. - Fri. 6 a.m. - 2 p.m.
Sat. - Sun. 7 a.m. - 4 p.m.
Serving breakfast all day
Lunch starts at 12:00

Make Marie's Place Your Place!

Welcome Back Specials

All you can eat French Toast at \$2.69

Blueberry - Apple Cinnamon

Chocolate Chip \$.50 extra

Two egg ham & cheese omelet, homefries

and toast (white or wheat) \$2.69

Lunch specials as well



1530 Mineral Springs Ave.
North Providence, R.I.
353-6540

444 Admiral St.
Providence, R.I.
455-0778

Formerly of Slavin Center and We've Relocated.

P

Your Campus Salon

Phase 1's Offering
\$5 OFF
the original price of a haircut.

Fernando Romero: Big East's Best

By Scott Pianowski

The story has been exactly the same all season. He arrives at his match, his face a picture of total concentration. He glides his 6'4" frame gracefully and effortlessly as he dominates his opponent. Then, wham, it's all over, as Fernando Romero dispatches another opponent with a quick racket, a quick mind, and a quick handshake.

No player has been more instrumental to the Friars' success the past two seasons (28-1 composite record) than senior Fernando Romero. Playing number one singles (as well as doubles), he has proven to be the premiere player in the Big East this campaign. The senior stalwart has rolled to a 10-0 start, highlighted by his capturing of the Big East singles title earlier this month.

How Fernando Romero actually became a Friar is an interesting story. As he grew up in Peru, quickly becoming one of the best tennis players in the country, Romero began looking at American colleges. When his first choice, BC, rejected him, he opted for Bryant, but soon found the competition at that level lacking. By mere chance, he practiced in the same club in the winter that members of PC tennis did, and it was arranged for Fernando to transfer to PC for his sophomore year, without having to sit out a year.

"There was no one there to challenge him," notes coach Carl La Branche.

When PC landed Romero, they landed the cornerstone for the past three seasons. He keyed the turnaround of the PC Men's Tennis program with a 23-6 sophomore campaign and a 28-4 record last year.

"When I first got here, Men's Tennis (at PC) usually had a losing record," said Romero. "Now, not only do we have a really strong team, but tennis overall in the East is considerably stronger."

Not surprisingly, Romero names the Big East singles title this year as his career highlight. Not far behind, however, is PC's defeat of BC last year, which proved once and for all the big mistake the Eagles made when they overlooked Romero.

"That (the victory) was sweet ... when I was at BC, I think they thought I was not a good player," said Romero. "I had not played in a couple of months, when (ex-Eagle tennis coach Mike) McDonald saw me play, and I didn't get in."

BC's loss has certainly turned into PC's gain. In fact, the only thing PC hasn't accomplished within the East is win the Big East team championships, finishing second the last two seasons.

"If we had this year's team my first year here, we would have won the Big East," Romero said, "but now the competition is very fierce. St. John's and Georgetown have excellent teams, and the level of play is getting better and better."

Coach La Branche faces the unenviable task of trying to find a replacement for his number one player. La Branche notes, "as good as we are, it's because we have the big boy on top. He



Photo by Thomas Maguire
Fernando Romero

will be a very difficult athlete to replace.

"He's been an absolute pleasure as #1 man, and as someone who can help the other kids."

Co-captain Andy Garcia, Romero's doubles partner, jokes that "losing Romero hurts for two reasons. Not only do we lose a great player, but now

the team and the coach need something new to crack on, other than Fernando's Spanish accent."

The next major goal for Romero and Men's Tennis is the ITCA championships at Princeton two weeks from now.

"The ITCA's are a chance for us to gain a lot of recognition, with schools such as Harvard, Yale, Princeton participating," notes Romero, who adds that he'd like to "hopefully, win a couple of rounds."

How would the big senior like to be remembered?

"I would like to be remembered as a gentleman (on the court)," said Romero. "My eyesight isn't too good, and I've called a lot of balls that were 'out', 'in' over the years."

Maybe Fernando's line calls haven't been the best over the past three seasons, but it's an easy call that Fernando Romero is the best tennis player in the Big East.

Men's Soccer Splits a Pair

By Brian DeCesare

The Providence College Men's Soccer team has split its first two games of a four-game road swing by defeating Brown last Wednesday evening and losing to Syracuse on Saturday.

Against the Brown Bruins, four different players scored for the Friars after sophomore Peter Russel got things going with a goal just five minutes into the game. With goals by Jeff VanTiem and Dennis Clark, PC extended its lead to 3-0 going into halftime. As the Friars led 3-1 mid-way through the second half, Sean McGroarty scored PC's final goal and John Martin tallied his third assist of the game as they went on to a 4-2 victory.

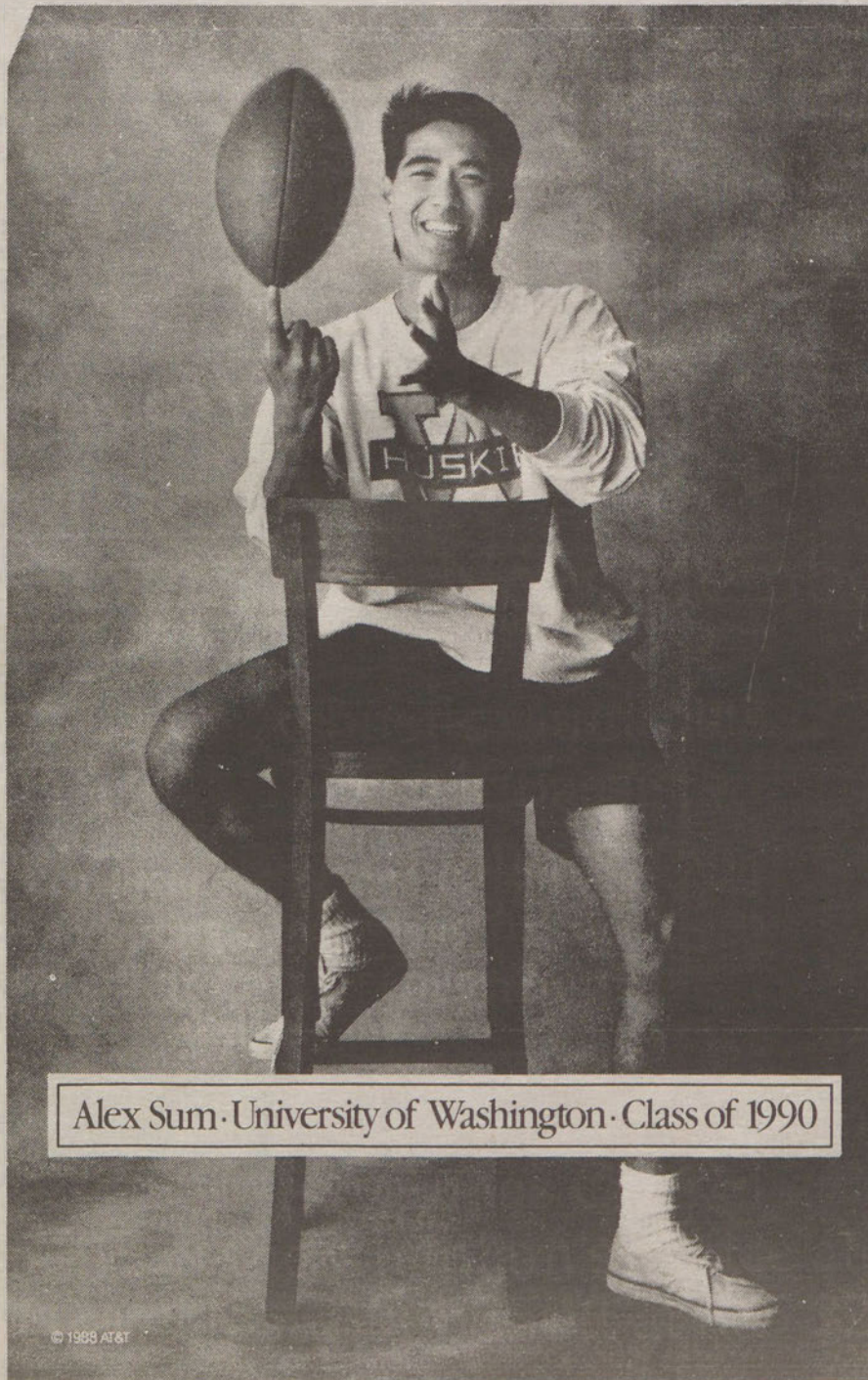
Having beaten Brown by the same score in which they beat Merrimack just two days prior, PC took its streak up to

Syracuse. Playing through cold and rainy conditions, the Friars were outshot 15-4 and their Big East rivals Syracuse defeated them 5-0, collecting their fourth shutout in four wins. Nino Galick was the hero for the Orangemen as he scored two second-half goals in spite of a career-high 10 saves by PC's junior goalie Jim Morris.

After an all-out miserable weekend in Syracuse, the Friars' sensational freshman Jeff VanTiem was awarded athlete-of-the-week here at Providence College. In only five games, VanTiem has scored 3 goals, tallied two assists and has taken 13 shots on net to earn him the honors.

The Friars, who are now 2-2-1, will try to get back on a winning track as they finish two more away games against Holy Cross and Yale before returning home next Wednesday.

"I wasn't rubbing it in—I just wanted Eddie to know the score of last night's game."



Alex Sum · University of Washington · Class of 1990

Go ahead and gloat. You can rub it in all the way to Chicago with AT&T Long Distance Service. Besides, your best friend Eddie was the one who said your team could never win three straight.

So give him a call. It costs a lot less than you think to let him know who's headed for the Playoffs. Reach out and touch someone.®

If you'd like to know more about AT&T products and services, like International Calling and the AT&T Card, call us at 1 800 222-0300.



AT&T

The right choice.

Sports

Field Hockey 1st in Northeast, 3rd Nationally

by Beth Albertini

The Providence Lady Friars continued their domination of Northeast regional Field Hockey this week with wins over Massachusetts and Fairfield.

Massachusetts became the sixth victim in the still young season, as the Lady Friars put together a 2-1 overtime win last Friday. Providence went into the game ranked No. 1 in the Northeast, with Massachusetts ranked third. The Lady Friars scored first, with 2:18 left in the first half, on a goal by Cami White. Karen Krawchuk added the assist. Massachusetts tied it up with 20:50 to go in the game. As neither team was able to put that winning goal in the net in regulation, the game ended locked at 1-1. In overtime, senior Stephanie Morey scored off a penalty corner with assists from White and Jennifer Theberge. Freshman Debbie Hagie continued to be strong in goal, coming up with eight

saves for the Lady Friars.

"This was a big regional game for us," said coach Jackie Gladu. "For the NCAA tournament, we have to prove we are strong in the region. It was an up and down game; I felt we had a slight territorial advantage over Massachusetts."

Saturday, the Lady Friars travelled to Fairfield University. Providence was victorious, 4-1. All-America candidate Karen Krawchuk came up with two goals, while freshmen Kristen Manneheim and Denise Hagie each contributed one. Cami White, Stephanie Morey and Debbie Barnhill all added assists. Gina Meli, another freshman goalie, turned in her first collegiate win in a game that was totally dominated by Providence.

The Lady Friars, at 7-0, remain the No. 1 team in the northeast, with big regional games this week at URI on Thursday and at home versus third-ranked New Hampshire on Saturday.



Field Hockey is looking toward the number one spot in the nation

Photo by Armando DeCastro

Men's, Women's XC Kicks Into Gear

by Stacey Lovejoy

Coach Ray Treacy is justifiably optimistic about the cross-country program for this coming year. He has both a winning tradition, the men are working on continuing a winning streak in dual and tri-meets that began in 1973, and the promise of fresh talent for both men's and women's teams, to cite as an explanation for his enthusiasm. Both the men's and women's teams are looking ahead to favorable odds at the Big East competitions where the men will feel the heat from Georgetown and the women can expect some competition from Georgetown and Villanova.

In their first meet of the season, a tri-meet held at U.N.H., the men captured and impres-

sive victory over U.N.H. and Northeastern who is one of the better teams in the conference. Providence placed four of the top five finishers in that first meet, David Burke and Scott Cody were first and second respectively. Coach Treacy expressed his enthusiasm about about Chris Bianchi and Paul Logan, two freshmen who had a strong finish in the U.N.H. meet and whom he feels promise to be contenders throughout the season.

The men are presently ranked second behind Iowa State in a national poll. Now coach Treacy is gauging the season to the focus of the November 20th NCAA competition and looking forward to being very competitive.

The women's team wrestled

the Big East's number one spot from Yale after an impressive victory at the U.R.I. meet. Providence placed the top four finishers; Hendricksen, Crowley, Gallagher and Nolan, ahead of Rebecca Rivken an All American from Yale. The coach is notably excited about such a performance and is quick to recognize the efforts and talents of two sophomores, Bridget Bowers and Mary Mul-lane who had an impressive finishing positions at the U.R.I. meet. The coach feels that with the hard work and training they did over the summer they have moved up to share a level with the top runners of the East.

Both the men's and women's teams will compete at Notre Dame on Friday.

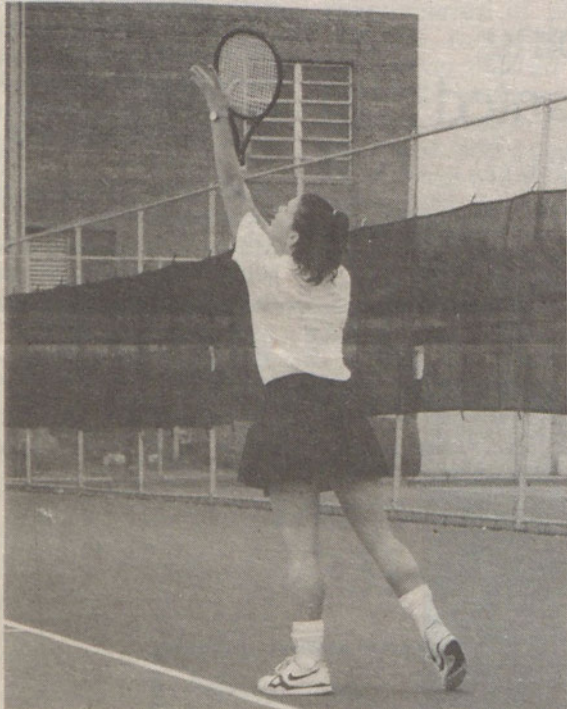


Photo By Armando DeCastro

The Women's Tennis Team Recorded their first two victories this past week.

This Week In PC Sports...

Thurs., Sept 28	Women's Tennis at Connecticut	3:00 pm
	Women's Field Hockey at Rhode Island	3:30 pm
Fri., Sept 29	Women's Volleyball at St. Peter's at National Catholic Tournament	4:00 pm
	Men's Tennis vs. Hartford	3:00 pm
	Women's Cross Country at National Catholic Championships	3:00
	Men's Cross Country at National Catholic Championships	4:00 pm
Sat., Sept 30	Men's Golf at Big East Championships	TBA
	Men's Golf at Big East Championships	TBA
	Women's Volleyball vs. Holy Cross at National Catholic Tournament (BC)	9:00 am
	Women's Volleyball vs. La Salle at National Catholic Tournament (BC)	11:00 am
	Women's Volleyball vs. Boston College at National Catholic Tournament (BC)	8:00 pm
	Women's Field Hockey vs. New Hampshire	1:00 pm
	Women's Soccer at New Hampshire	2:00 pm
Sun., Oct 1	Men's Golf at Big East Championships	TBA
	Women's Volleyball vs. Seton Hall at National Catholic Tournament (BC)	12:00 pm
	Women's Volleyball vs. Sienna at National Catholic Tournament (BC)	2:00 pm
	Men's Soccer at Yale	2:00 pm
Mon., Oct 2	Women's Soccer vs. Bryant	3:30 pm
	Men's Tennis vs. Massachusetts	3:00 pm

ALL HOME GAMES ARE IN BOLD

Lady Friars Growing Up Quickly Notch First Two Victories

By Charlie Clark

"This women's tennis team looks like it could be the best women's team ever here at Providence," exclaims an exuberant third year women's tennis coach Carl LaBranche after his Lady Friars won two straight this past week.

After starting out the season 0-4, the Lady Friars trounced Hartford (6 1/2-1 1/2) and Vermont (8-1) last week. Keying the victories for the Lady Friars were all six singles players, as they swept the singles matches from both clubs.

"I'm very upbeat. We started off 0-4 but those four matches were a really tough way for a young team to get started, but by beating Hartford and Vermont, it shows that we are ready to play the game," said LaBranche, "We are a good young team and we're getting strong performances from

many young players."

Two young players who are giving LaBranche strong performances are freshman Jenn Comstock and Becky Lewicki. "I'm very pleased with Jenn. She has looked good all year and has moved up to number three singles," remarks LaBranche. Comstock has used her strong baseline game to propel her to four consecutive victories. Also on a winning streak is Becky Lewicki, "Becky has looked strong in winning her last three straight matches," says LaBranche.

Also starring for the Lady Friars this past week was number one singles player, sophomore Dana Dourney. Dourney used her powerful groundstrokes and the experience gained from playing number one last year to defeat both Hartford and Vermont.

On a team laden with freshmen and sophomores, the

continued on p 17